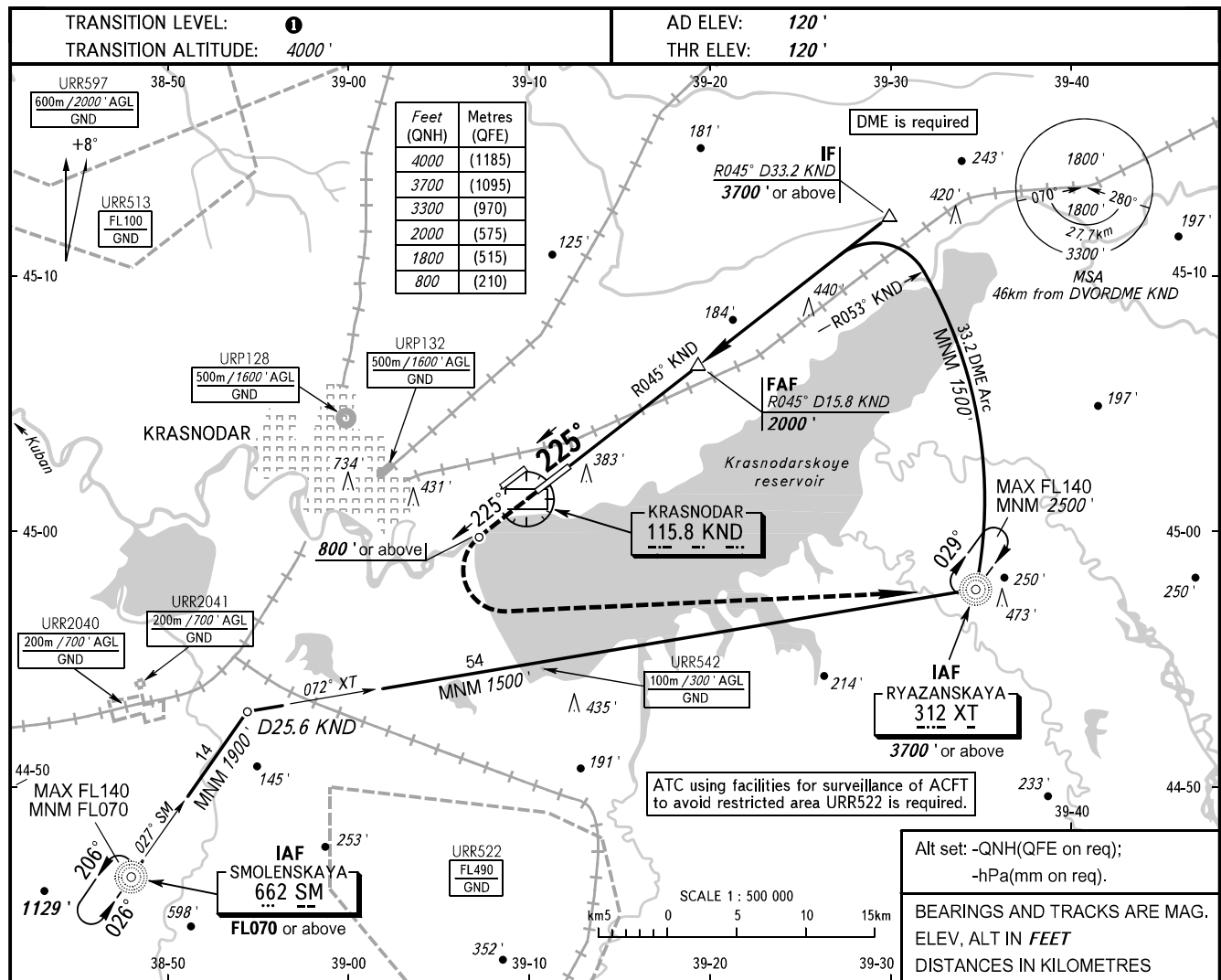


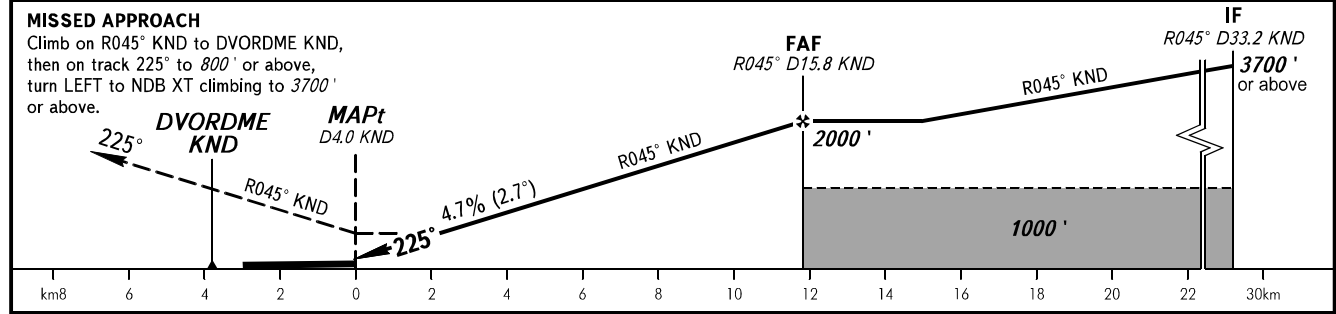
**INSTRUMENT  
APPROACH  
CHART - ICAO**

RADAR	121.300
TOWER	118.200

**KRASNODAR, RUSSIA  
PASHKOVSKIY  
DVOR Y RWY 23L**



DME KND	8.0	10.0	12.0	14.0	15.8
ALTITUDE	800'	1110'	1420'	1720'	2000'



OCA(H)		A	B	C	D						
Straight-in	Approach	550' (430')	550' (430')	550' (430')	550' (430')						
	Circling	680' (560')	680' (560')	780' (660')	830' (710')						
GROUND SPEED		km/h	150	180	210	240	270	300	330	360	390
RATE OF DESCENT		m/s	2.0	2.4	2.7	3.1	3.5	3.9	4.3	4.7	5.1
		ft/min	385	463	540	617	694	771	848	925	1002

**1** TRANSITION LEVEL:  
- FL060 when QNH is 977 hPa (733mm mercury column) or above;  
- FL070 when QNH is 941 hPa (706mm mercury column) or above,  
but less than 977 hPa (733mm mercury column).

**NOTE:**  
1. Timing not authorized for defining MAPt.  
2. Turn before passing DVORDME KND is PROHIBITED.  
3. Wind shear is expected.  
4. ATC using facilities for surveillance of ACFT to avoid restricted area URR522 is required for holding over NDB SM.