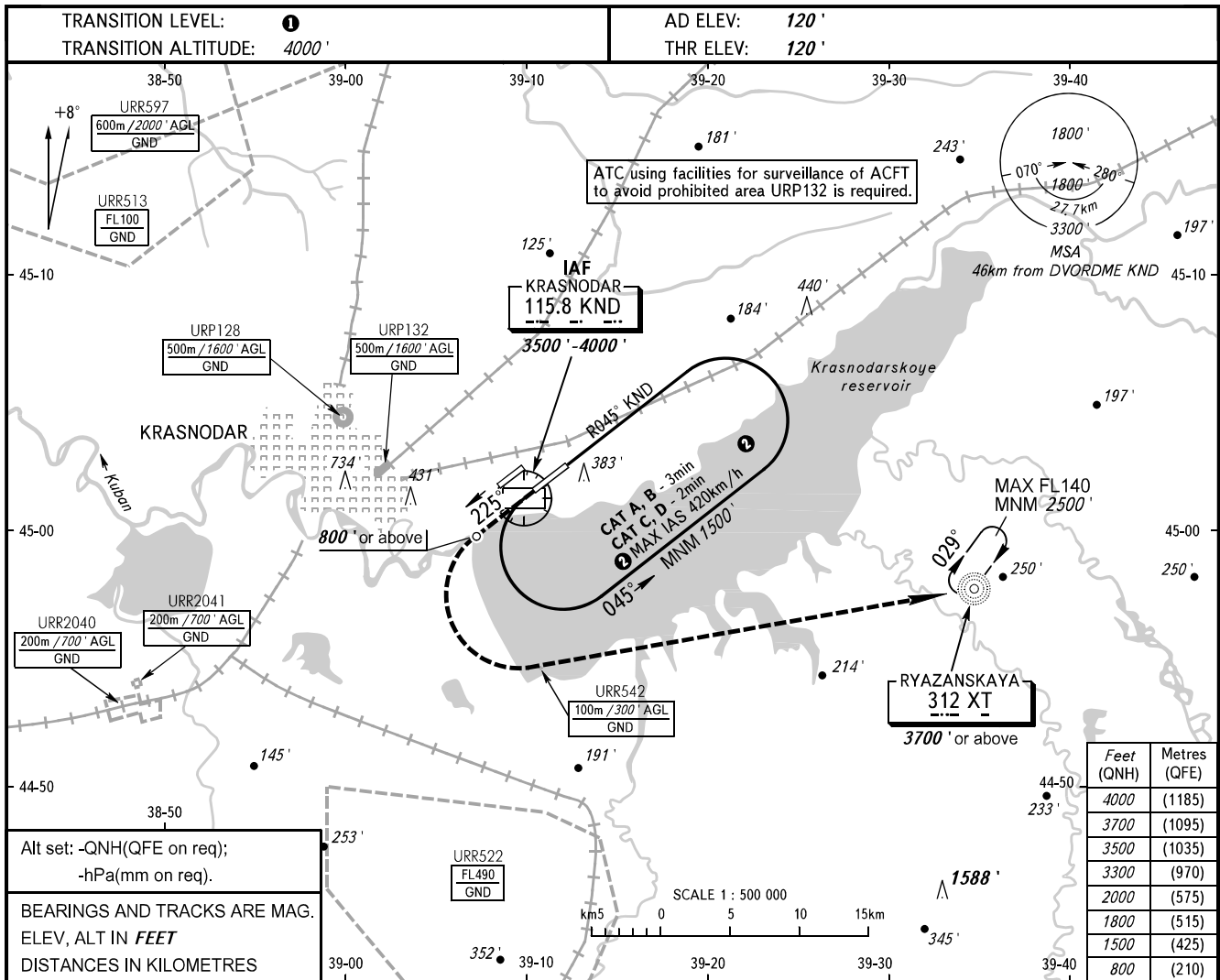


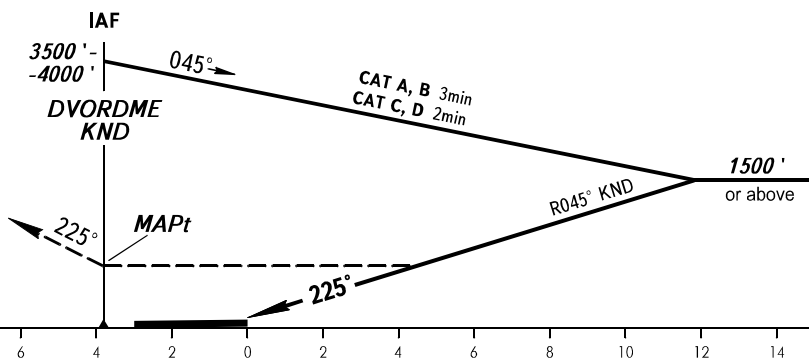
**INSTRUMENT
APPROACH
CHART - ICAO**

RADAR	121.300
TOWER	118.200

KRASNODAR, RUSSIA
PASHKOVSKIY
DVOR W RWY 23L



MISSED APPROACH
Climb on track 225° to 800'
or above, turn LEFT to NDB XT
climbing to 3700' or above.



OCA(H)		A	B	C	D
Straight-in		740' (620')	740' (620')	740' (620')	740' (620')
	Approach				
Circling		740' (620')	740' (620')	780' (660')	830' (710')

① TRANSITION LEVEL:
- FL060 when QNH is 977 hPa (733mm mercury column) or above;
- FL070 when QNH is 941 hPa (706mm mercury column) or above,
but less than 977 hPa (733mm mercury column).

NOTE:
1. MAPt at DVORDME KND. Timing not authorized for defining MAPt.
2. Turn before passing MAPt is PROHIBITED.
3. Wind shear is expected.