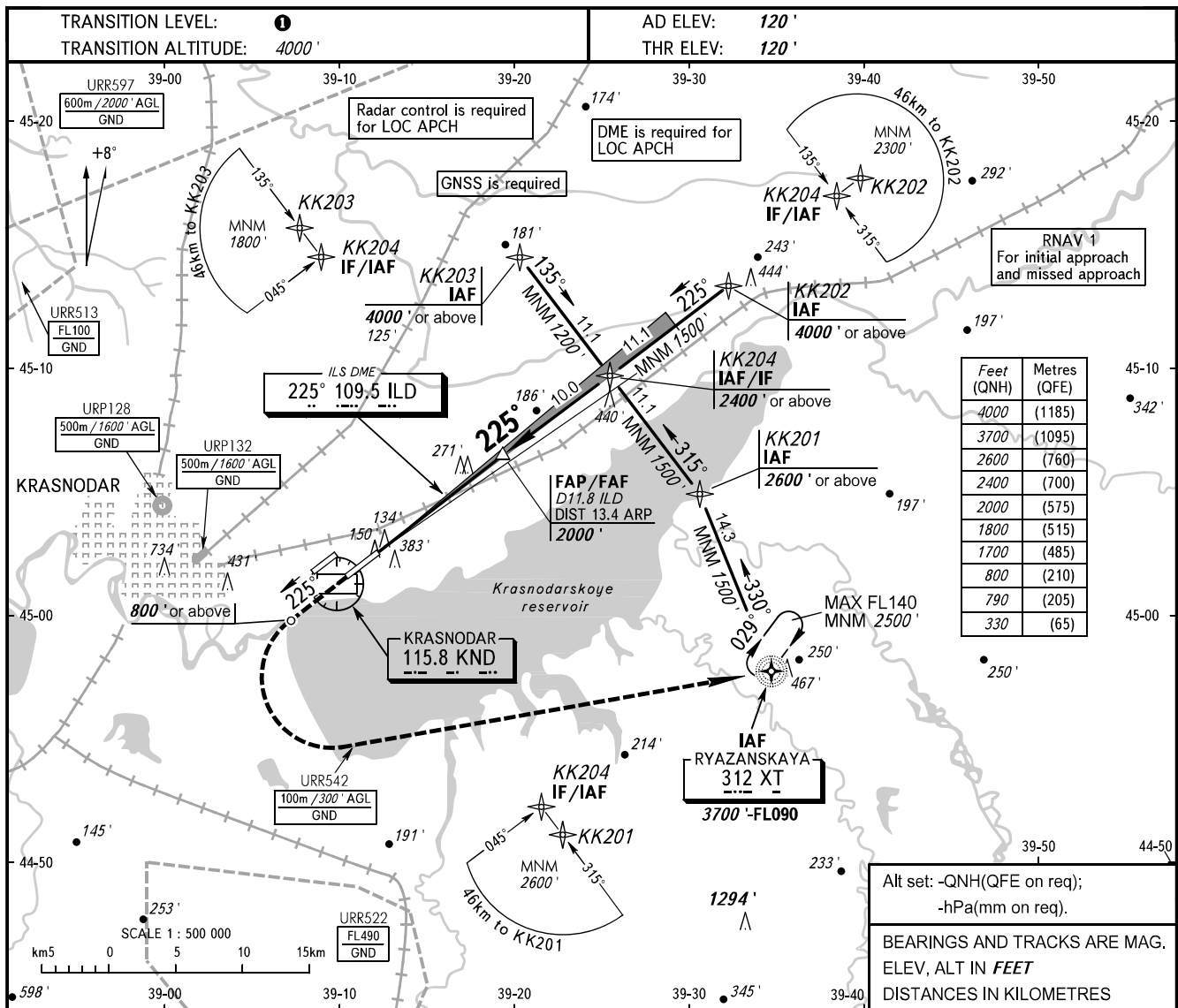


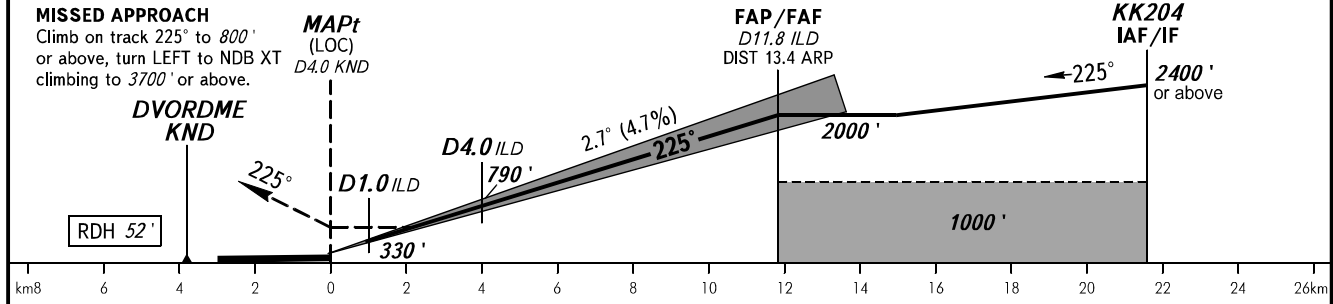
**INSTRUMENT
APPROACH
CHART - ICAO**

**KRASNODAR, RUSSIA
PASHKOVSKIY
ILS Z CAT I/II, LOC Z RWY 23L**

RADAR	121.300
TOWER	118.200



Alt set: -QNH(QFE on req);
-hPa(mm on req).
BEARINGS AND TRACKS ARE MAG.
ELEV, ALT IN FEET
DISTANCES IN KILOMETRES



TRANSITION LEVEL:
- FL060 when QNH is 977 hPa (733mm mercury column) or above;
- FL070 when QNH is 941 hPa (706mm mercury column) or above,
but less than 977 hPa (733mm mercury column).
NOTE:
1. Timing not authorized for defining MAPt.
2. Turn before passing MAPt is PROHIBITED.
3. Wind shear is expected.

GROUND SPEED	km/h	150	180	210	240	270	300	330	360	390
		RATE OF DESCENT	m/s	2.0	2.4	2.7	3.1	3.5	3.9	4.3
	ft/min	385	463	540	617	694	771	848	925	1002