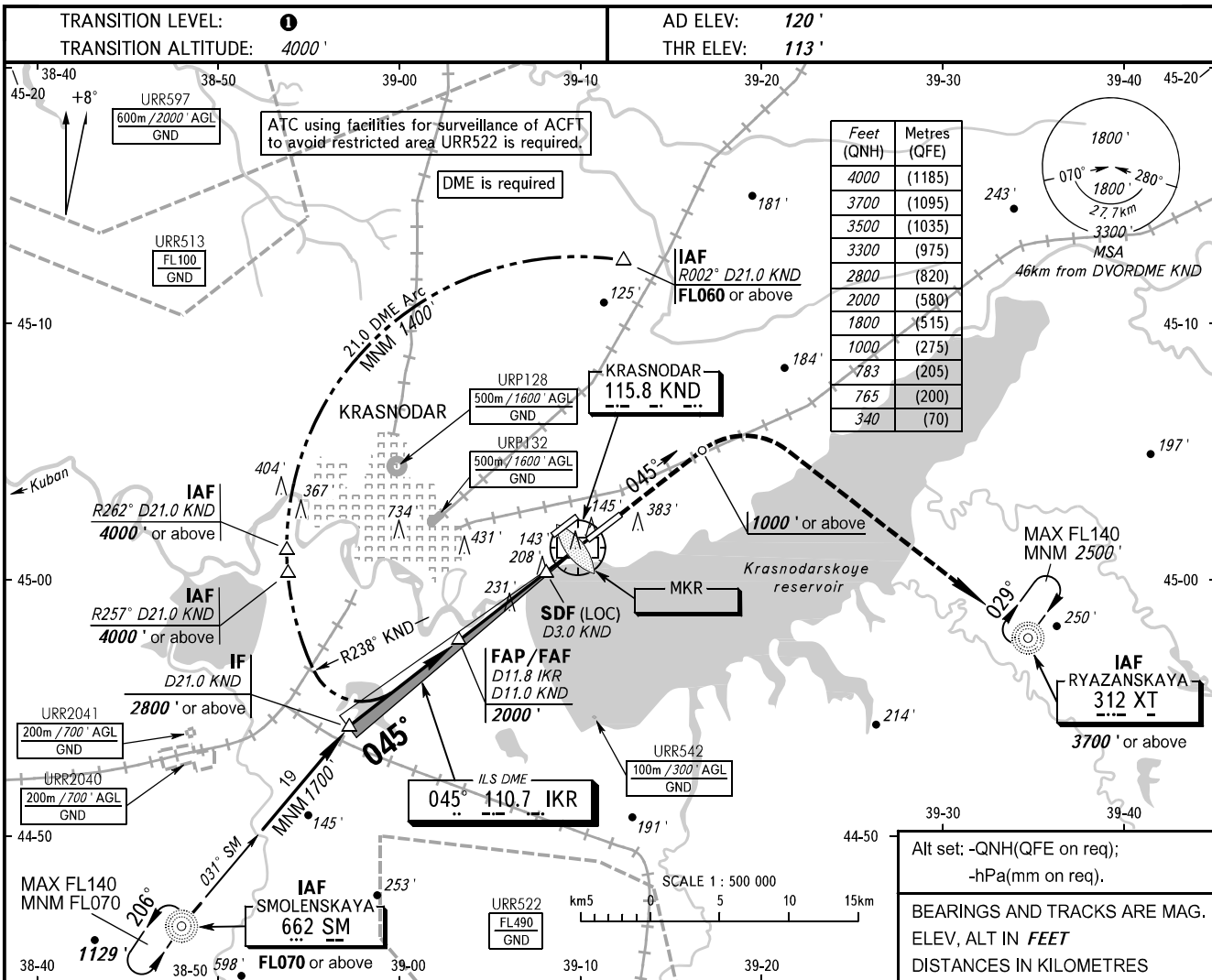


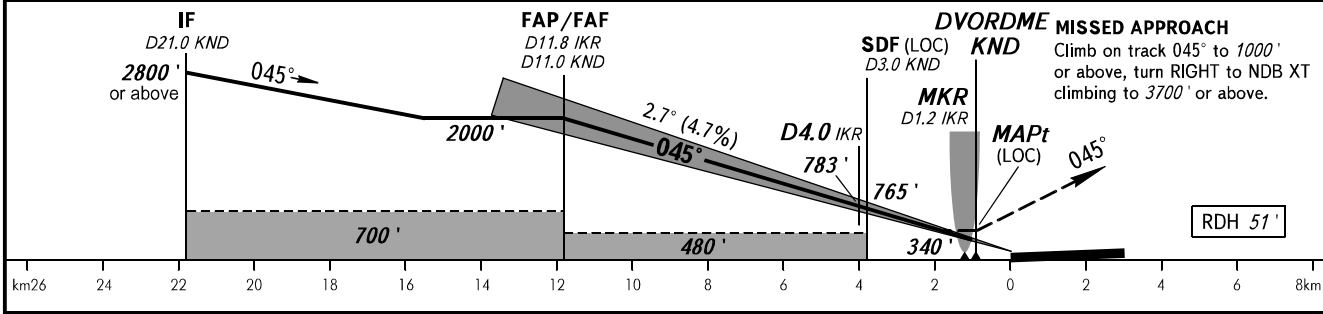
**INSTRUMENT
APPROACH
CHART - ICAO**

**KRASNODAR, RUSSIA
PASHKOVSKIY
ILS Y CAT I/II, LOC Y RWY 05R**

RADAR	121.300
TOWER	118.200



DME KND	11.0	10.0	8.0	6.0	4.0	2.0
ALTITUDE	2000'	1840'	1540'	1230'	920'	610'



OCA(H)		A	B	C	D
Straight-in	CAT I	277' (164')	287' (174')	296' (184')	306' (194')
	CAT II	168' (56')	178' (66')	190' (78')	206' (94')
Approach	LOC With SDF	460' (350')	460' (350')	460' (350')	460' (350')
	LOC WO SDF	480' (370')	480' (370')	480' (370')	480' (370')
Circling		680' (560')	680' (560')	780' (660')	830' (710')

1 TRANSITION LEVEL:
- FLO60 when QNH is 977 hPa (733mm mercury column) or above;
- FLO70 when QNH is 941 hPa (706mm mercury column) or above,
but less than 977 hPa (733mm mercury column).

NOTE:
1. MAPt at DVORDME KND. Timing not authorized for defining MAPt.
2. Turn before passing MAPt is PROHIBITED.
3. Wind shear is expected.
4. ATC using facilities for surveillance of ACFT to avoid restricted area URR522 is required for holding over NDB SM.

GROUND SPEED	km/h	150	180	210	240	270	300	330	360	390
	m/s	2.0	2.4	2.7	3.1	3.5	3.9	4.3	4.7	5.1
RATE OF DESCENT	ft/min	385	463	540	617	694	771	848	925	1002

CHANGE: New chart