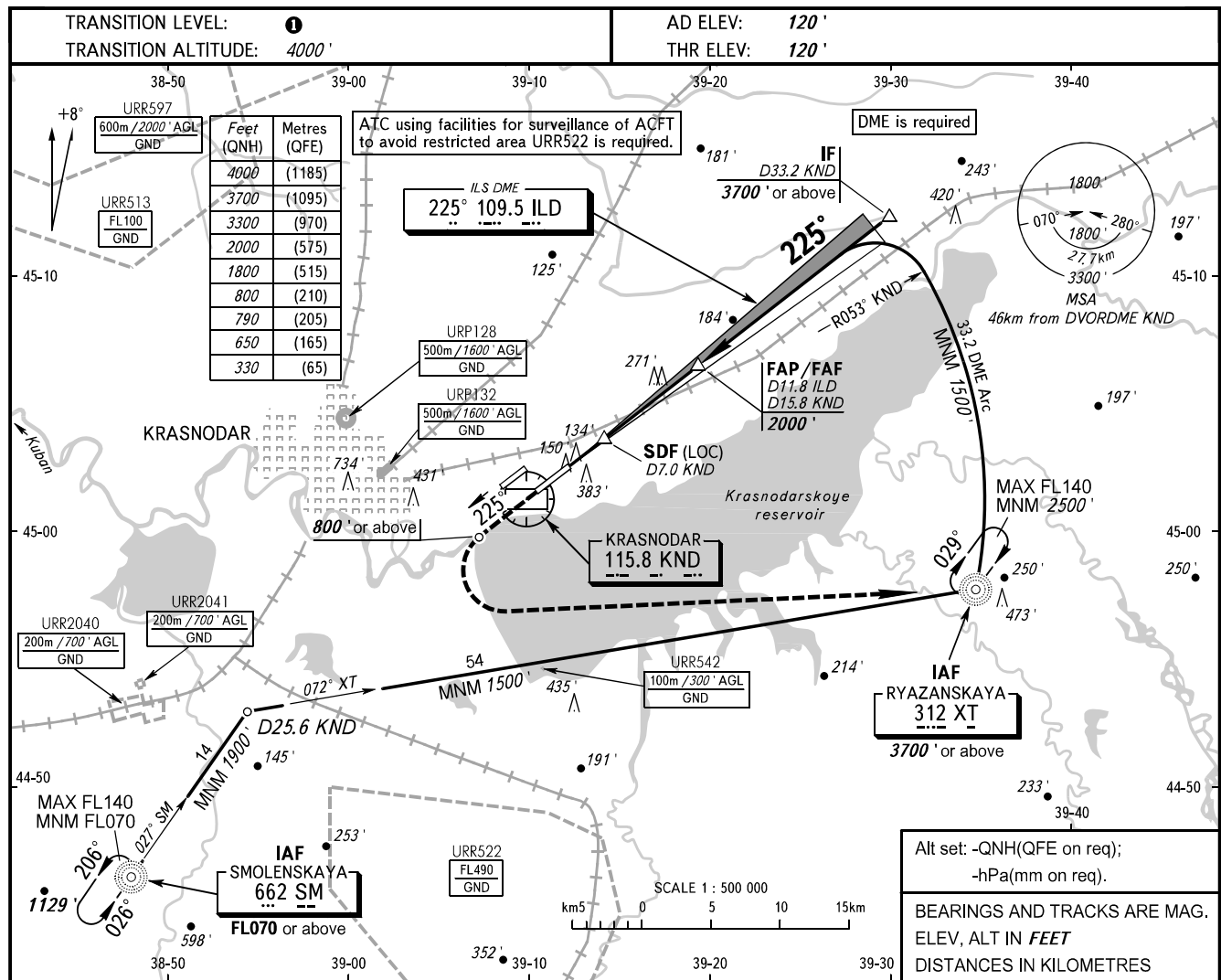


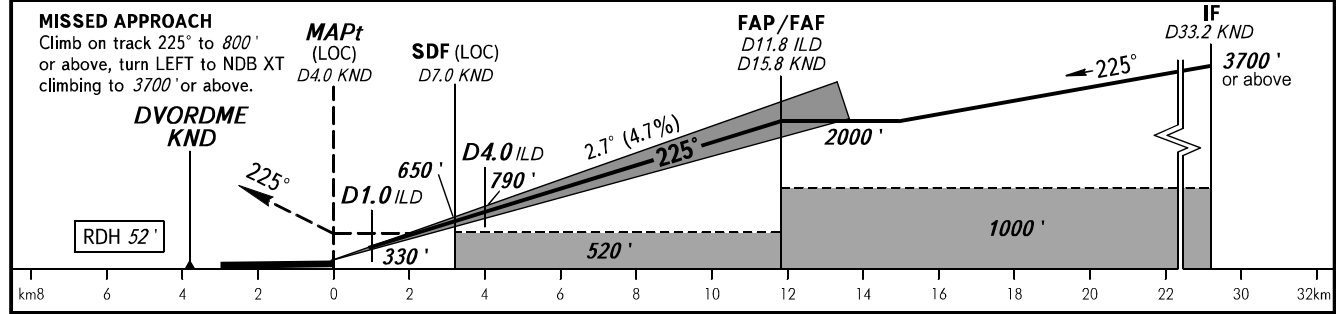
**INSTRUMENT
APPROACH
CHART - ICAO**

RADAR	121.300
TOWER	118.200

**KRASNODAR, RUSSIA
PASHKOVSKIY
ILS X CAT I/II, LOC X RWY 23L**



DME KND	8.0	10.0	12.0	14.0	15.8
ALTITUDE	800'	1110'	1420'	1730'	2000'



OCA(H)		A	B	C	D
Straight-in	CAT I	281' (162')	291' (171')	301' (181')	311' (191')
	CAT II	173' (55')	183' (65')	196' (78')	210' (92')
Approach	LOC With SDF	470' (350')	470' (350')	470' (350')	470' (350')
	LOC WO SDF	520' (400')	520' (400')	520' (400')	520' (400')
Circling		680' (560')	680' (560')	780' (660')	830' (710')

① TRANSITION LEVEL:
 - FL060 when QNH is 977 hPa (733mm mercury column) or above;
 - FL070 when QNH is 941 hPa (706mm mercury column) or above,
 but less than 977 hPa (733mm mercury column).
NOTE:
 1. Timing not authorized for defining MAPt.
 2. Turn before passing MAPt is PROHIBITED.
 3. Wind shear is expected.
 4. ATC using facilities for surveillance of ACFT to avoid restricted area URR522 is required for holding over NDB SM.

GROUND SPEED	km/h	150	180	210	240	270	300	330	360	390
	m/s	2.0	2.4	2.7	3.1	3.5	3.9	4.3	4.7	5.1
RATE OF DESCENT	ft/min	385	463	540	617	694	771	848	925	1002

CHANGE: New chart