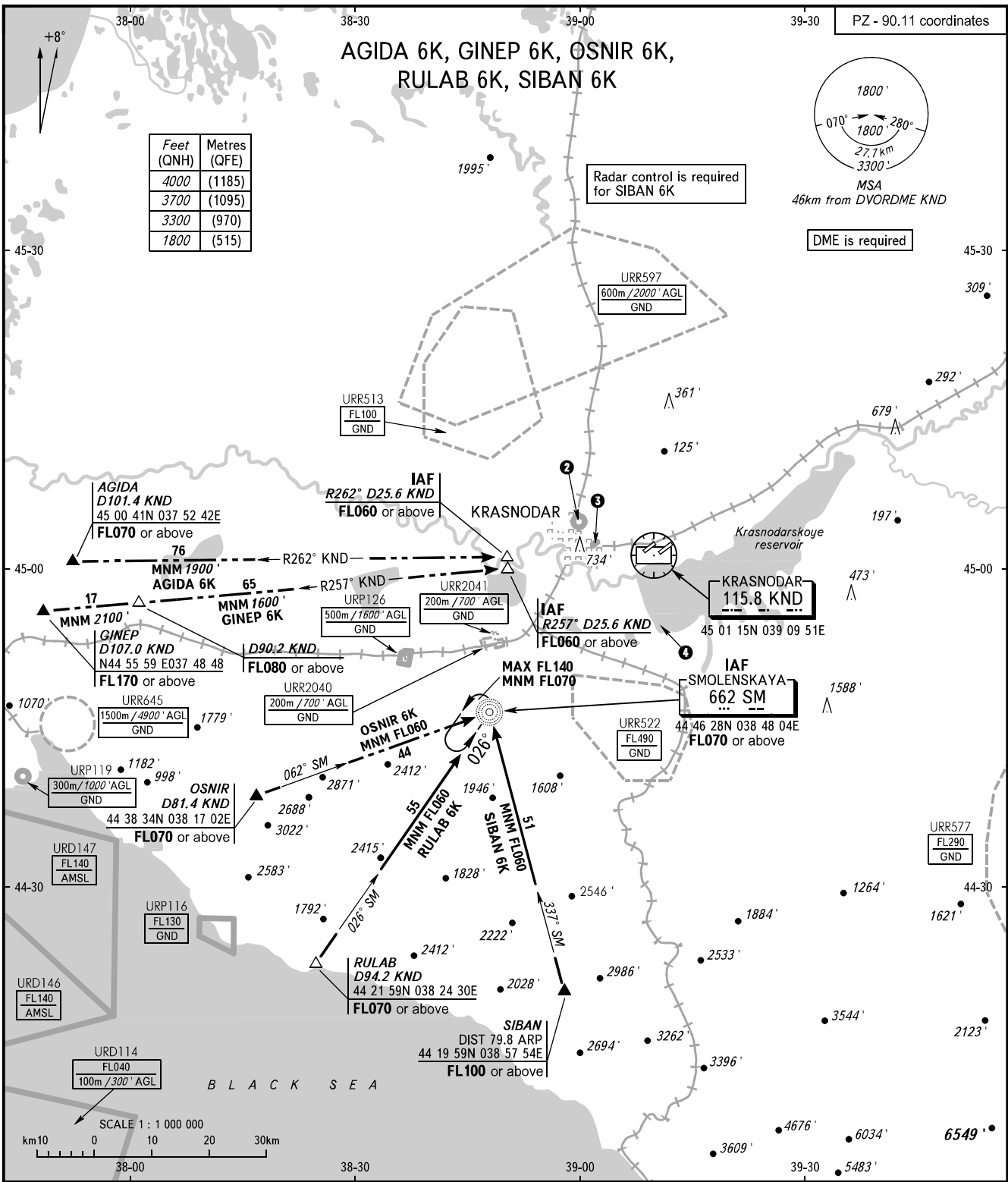


STANDARD ARRIVAL CHART
INSTRUMENT (STAR) - ICAO

KRASNODAR, RUSSIA
PASHKOVSKIY
RWY 23L

TRANSITION
LEVEL: ①



APPROACH Sector WEST	127.700
RADAR Sector EAST	129.600
TOWER	121.300
	118.200

② URP128 500m/1600' AGL GND	③ URP132 500m/1600' AGL GND
④ URR542 100m/300' AGL GND	

BEARINGS AND TRACKS ARE MAGNETIC
ALTITUDES AND ELEVATIONS IN FEET
DISTANCES IN KILOMETRES

Alt set: -QNH(QFE on req);
-hPa(mm on req).

CHANGE: New chart