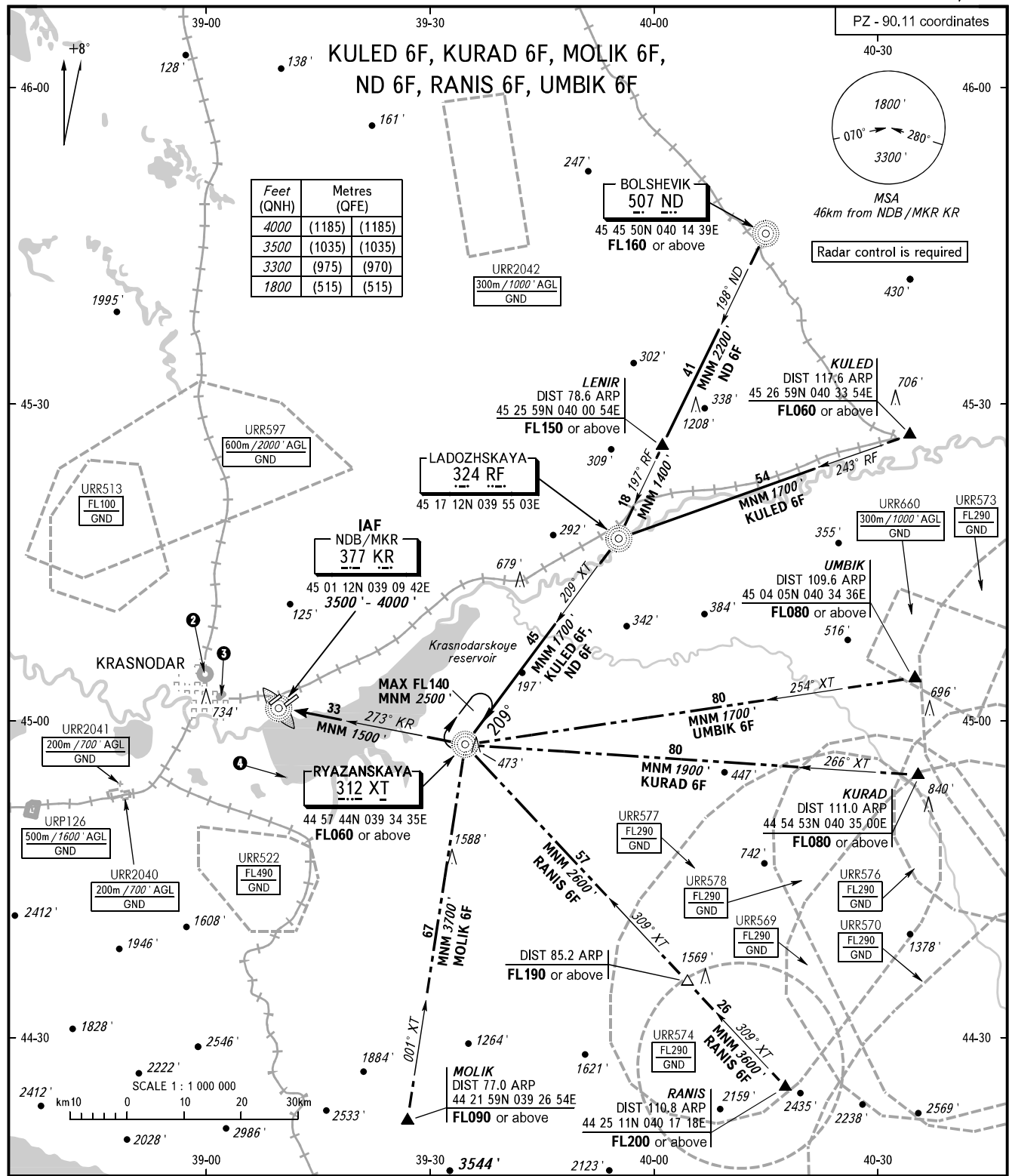


STANDARD ARRIVAL CHART  
INSTRUMENT (STAR) - ICAO

KRASNODAR, RUSSIA  
PASHKOVSKIY  
RWY 05R/23L

TRANSITION  
LEVEL: ①



APPROACH Sector WEST **127.700**  
Sector EAST **129.600**  
RADAR TOWER **121.300**  
**118.200**

② **URP128**  
500m/1600' AGL  
GND

③ **URP132**  
500m/1600' AGL  
GND

④ **URR542**  
100m/300' AGL  
GND

① **TRANSITION LEVEL:**  
- FL060 when QNH is 977 hPa (733mm mercury column) or above;  
- FL070 when QNH is 941 hPa (706mm mercury column) or above,  
but less than 977 hPa (733mm mercury column).

**NOTE:**  
1. When URR577, URR578, URR576, URR573, URR569 are active,  
STAR KURAD 6F is not AVBL.  
2. When URR574, URR577, URR578, URR569 are active,  
STAR RANIS 6F is not AVBL.  
3. When URR578, URR573, URR577, URR576, URR569 are active,  
STAR UMBIK 6F is not AVBL.

BEARINGS AND TRACKS ARE MAGNETIC  
ALTITUDES AND ELEVATIONS IN FEET  
DISTANCES IN KILOMETRES

Alt set: -QNH(QFE on req);  
-hPa(mm on req).

CHANGE: New chart