

STANDARD ARRIVAL CHART  
INSTRUMENT (STAR) - ICAO

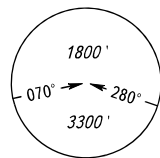
KRASNODAR, RUSSIA  
PASHKOVSKIY  
RWY 05R/23L

TRANSITION  
LEVEL: ①

PZ - 90.11 coordinates

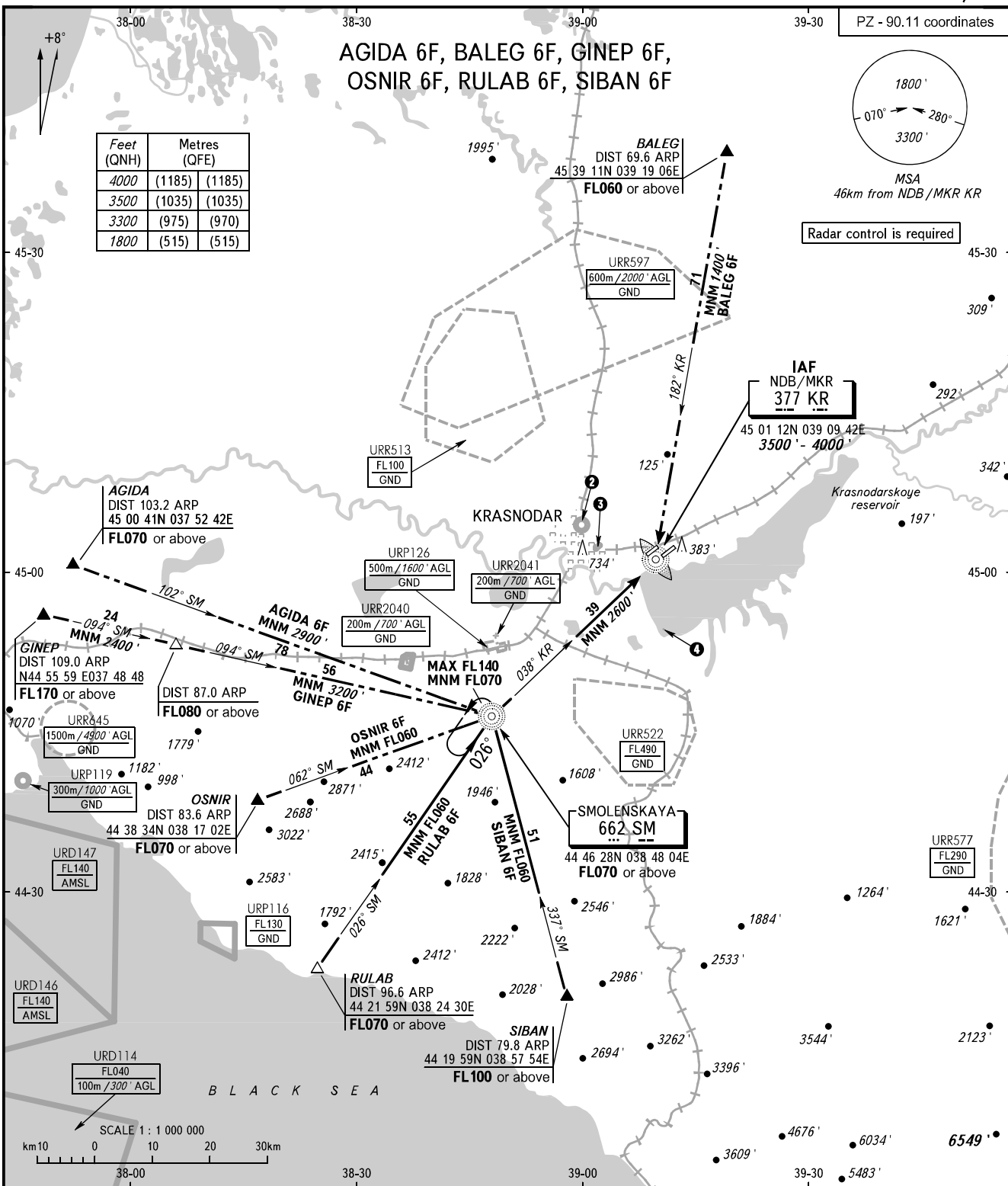
AGIDA 6F, BALEG 6F, GINEP 6F,  
OSNIR 6F, RULAB 6F, SIBAN 6F

Feet (QNH)	Metres (QFE)	Metres (QFE)
4000	(1185)	(1185)
3500	(1035)	(1035)
3300	(975)	(970)
1800	(515)	(515)



MSA  
46km from NDB/MKR KR

Radar control is required



SCALE 1 : 1 000 000  
km 10 0 10 20 30km

APPROACH Sector WEST 127.700  
Sector EAST 129.600  
RADAR 121.300  
TOWER 118.200

② URP128  
500m / 1600' AGL  
GND

③ URP132  
500m / 1600' AGL  
GND

① TRANSITION LEVEL:  
- FL060 when QNH is 977 hPa (733mm mercury column) or above;  
- FL070 when QNH is 941 hPa (706mm mercury column) or above,  
but less than 977 hPa (733mm mercury column).

NOTE:  
1. ATC using facilities for surveillance of ACFT to avoid restricted area URR522 is required for holding over NDB SM.  
2. ATC using facilities for surveillance of ACFT to avoid prohibited area URP116 is required for STAR RULAB 6F.  
3. ATC using facilities for surveillance of ACFT to avoid restricted area URR522 is required for STAR AGIDA 6F, GINEP 6F, OSNIR 6F, RULAB 6F, SIBAN 6F.

BEARINGS AND TRACKS ARE MAGNETIC  
ALTITUDES AND ELEVATIONS IN FEET  
DISTANCES IN KILOMETRES

Alt set: -QNH(QFE on req);  
-hPa(mm on req).

CHANGE: New chart