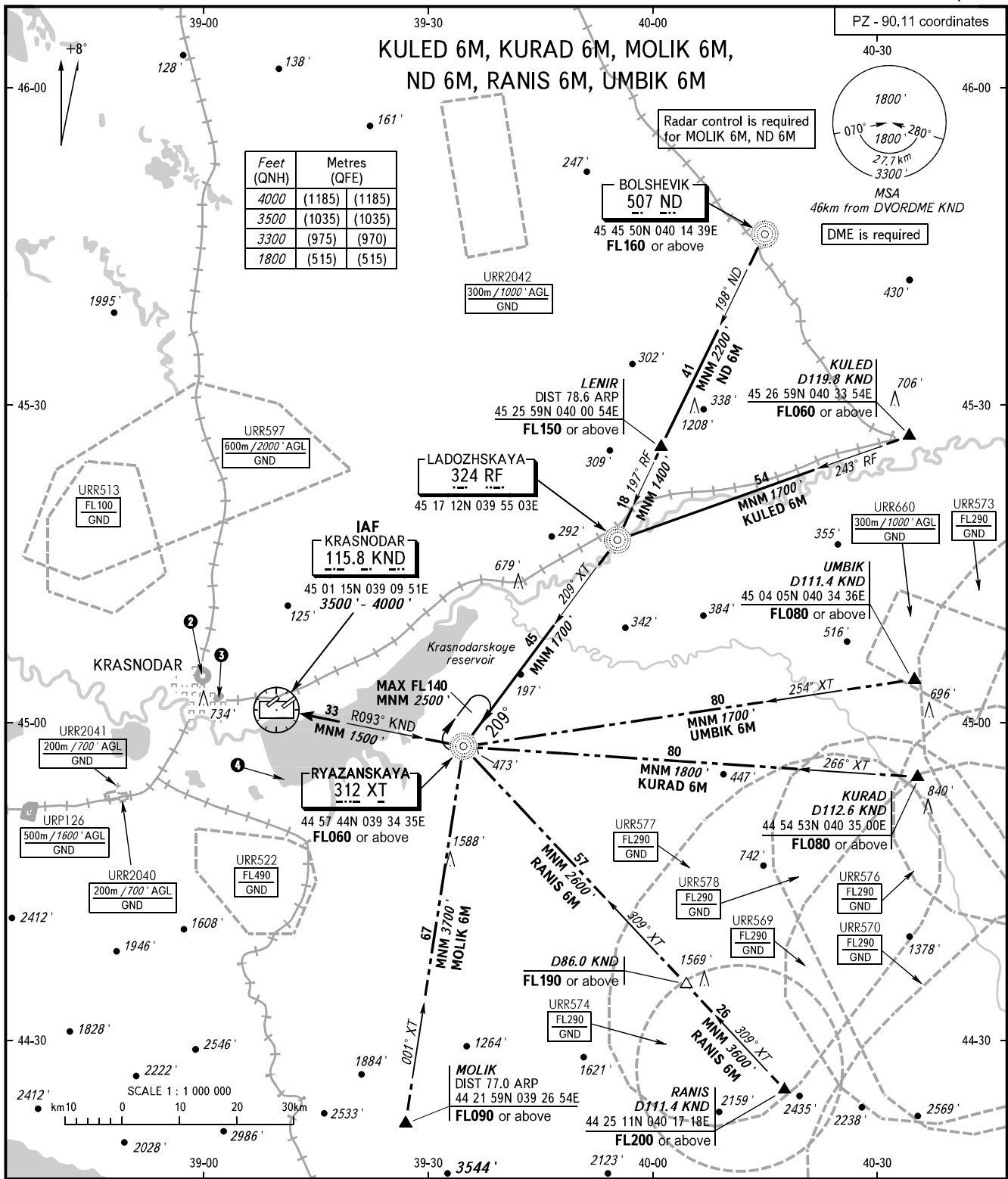


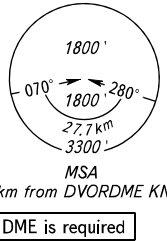
STANDARD ARRIVAL CHART
INSTRUMENT (STAR) - ICAO

KRASNODAR, RUSSIA
PASHKOVSKIY
RWY 05R/23L

TRANSITION
LEVEL: 1



Feet (QNH)	Metres (QFE)	
4000	(1185)	(1185)
3500	(1035)	(1035)
3300	(975)	(970)
1800	(515)	(515)



APPROACH	Sector WEST	127.700
	Sector EAST	129.600
RADAR		121.300
TOWER		118.200

- 2 URP128
500m/1600' AGL
GND
- 3 URP132
500m/1600' AGL
GND
- 4 URR542
100m/300' AGL
GND

1 TRANSITION LEVEL:
- FL060 when QNH is 977 hPa (733mm mercury column) or above;
- FL070 when QNH is 941 hPa (706mm mercury column) or above,
but less than 977 hPa (733mm mercury column).

NOTE:
1. When URR577, URR578, URR576, URR573, URR569 are active,
STAR KURAD 6M is not AVBL.
2. When URR574, URR577, URR578, URR569 are active,
STAR RANIS 6M is not AVBL.
3. When URR578, URR573, URR577, URR576, URR569 are active,
STAR UMBIK 6M is not AVBL.

BEARINGS AND TRACKS ARE MAGNETIC
ALTITUDES AND ELEVATIONS IN FEET
DISTANCES IN KILOMETRES

Alt set: -QNH(QFE on req);
-hPa(mm on req).

CHANGE: New chart