

STANDARD ARRIVAL CHART
INSTRUMENT (STAR) - ICAO

KRASNODAR, RUSSIA
PASHKOVSKIY
RWY 05R/23L

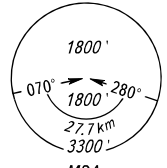
TRANSITION
LEVEL: ①

PZ - 90.11 coordinates

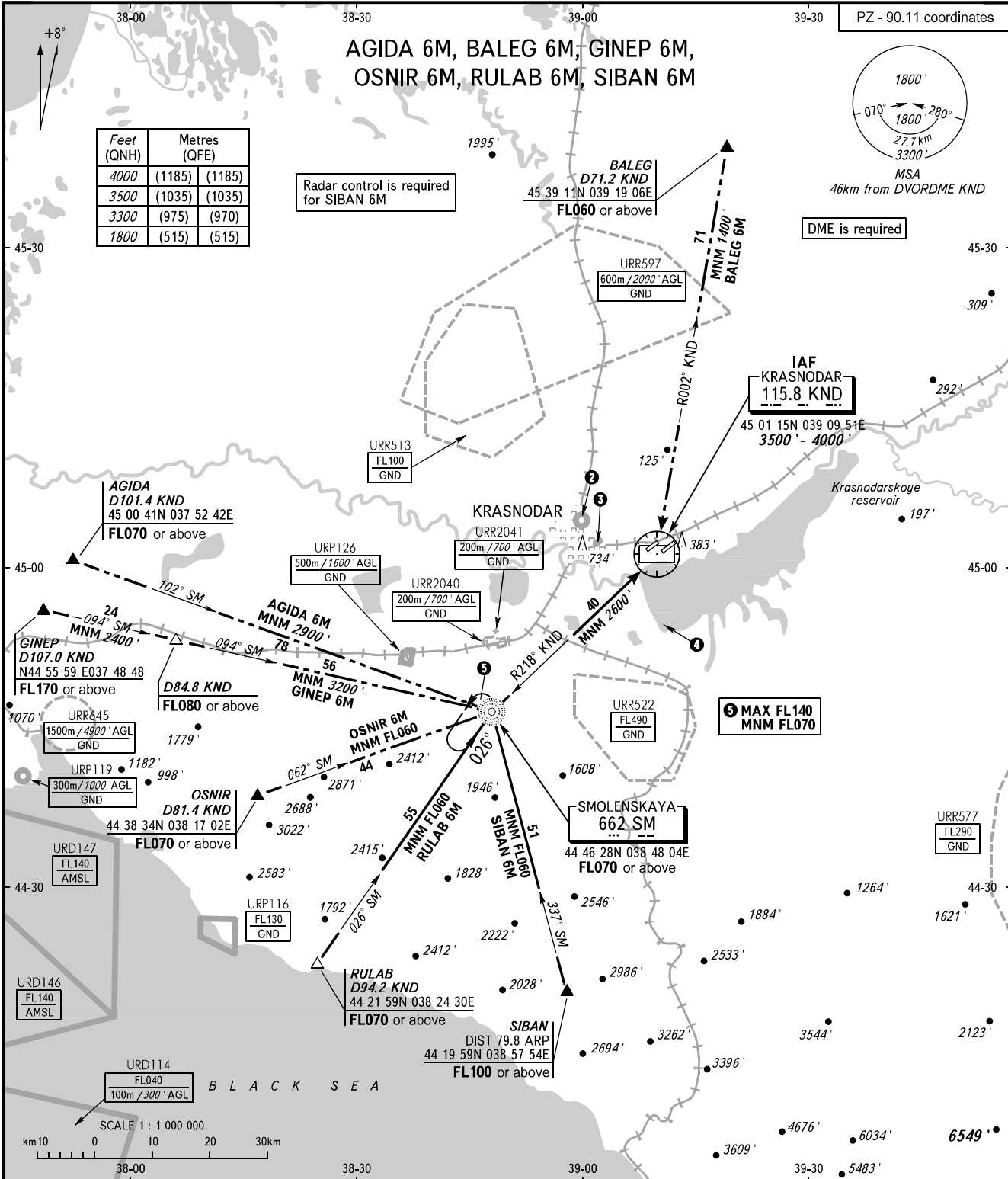
AGIDA 6M, BALEG 6M, GINEP 6M,
OSNIR 6M, RULAB 6M, SIBAN 6M

Feet (QNH)	Metres (QFE)	Metres (QFE)
4000	(1185)	(1185)
3500	(1035)	(1035)
3300	(975)	(970)
1800	(515)	(515)

Radar control is required
for SIBAN 6M



DME is required



APPROACH Sector WEST 127.700
Sector EAST 129.600
RADAR 121.300
TOWER 118.200

② URP128
500m / 1600' AGL
GND

③ URP132
500m / 1600' AGL
GND

① TRANSITION LEVEL:
- FL060 when QNH is 977 hPa (733mm mercury column) or above;
- FL070 when QNH is 941 hPa (706mm mercury column) or above,
but less than 977 hPa (733mm mercury column).

NOTE:

1. ATC using facilities for surveillance of ACFT to avoid restricted area URR522 is required for holding over NDB SM.
2. ATC using facilities for surveillance of ACFT to avoid prohibited area URP116 is required for STAR RULAB 6M.
3. ATC using facilities for surveillance of ACFT to avoid restricted area URR522 is required for STAR AGIDA 6M, GINEP 6M, OSNIR 6M, RULAB 6M, SIBAN 6M.

④ URR542
100m / 300' AGL
GND

BEARINGS AND TRACKS ARE MAGNETIC
ALTITUDES AND ELEVATIONS IN FEET
DISTANCES IN KILOMETRES

Alt set: -QNH(QFE on req);
-hPa(mm on req).