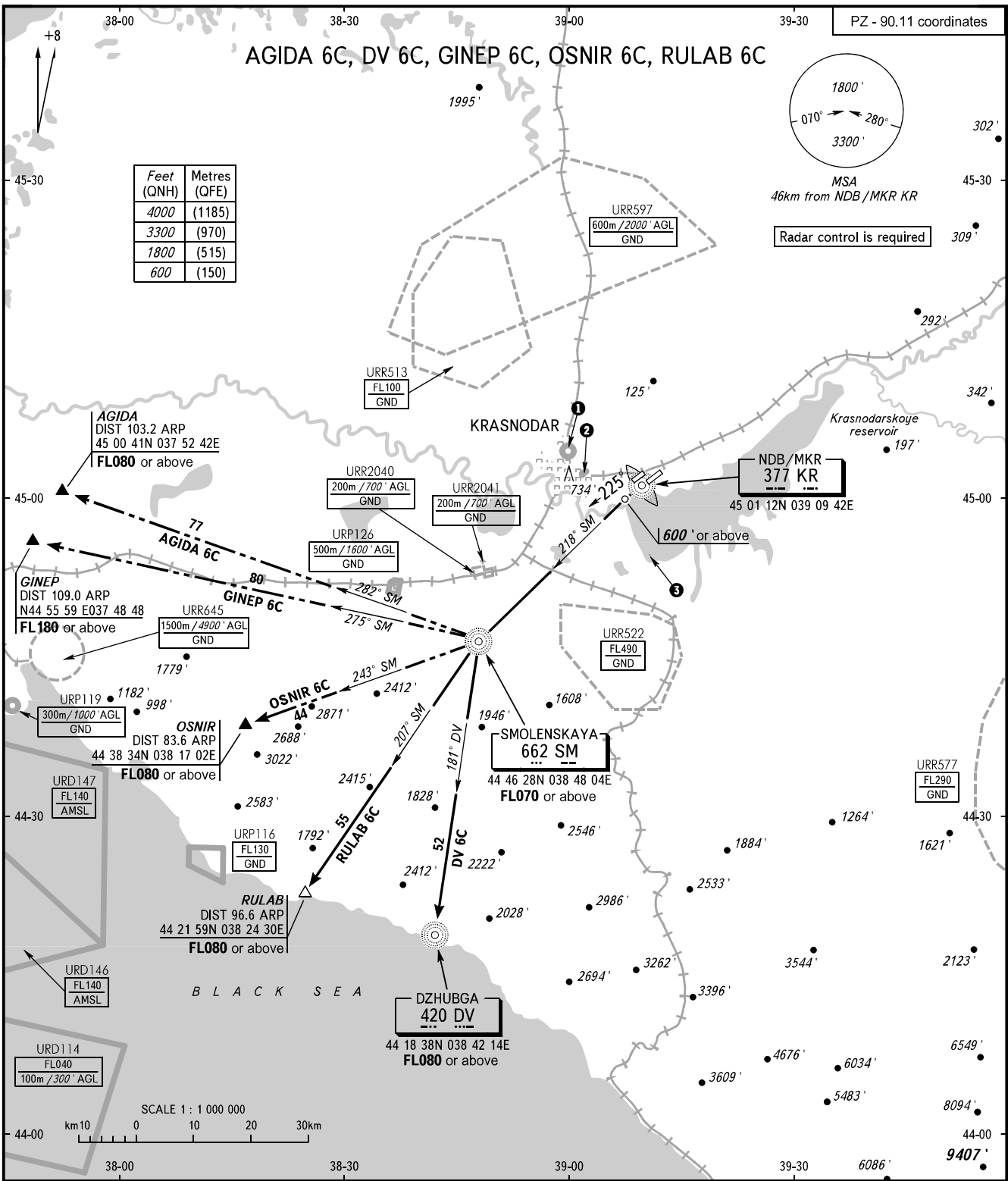


STANDARD DEPARTURE CHART
INSTRUMENT (SID) - ICAO

TRANSITION
ALTITUDE: 4000'

KRASNODAR, RUSSIA
PASHKOVSKIY
RWY 23L



TOWER 118.200
RADAR 121.300
APPROACH Sector WEST 127.700
Sector EAST 129.600

WARNING:
1. Turn before passing DER is PROHIBITED.
2. The minimum climb gradients (required due to the airspace structure only) are as follows:
- 5.3% up to FL070 for SIDs AGIDA 6C, DV 6C, OSNIR 6C, RULAB 6C;
- 5.3% up to FL070, then 4.2% up to FL180 for SID GINEP 6C.

- ① URP128 500m / 1600' AGL GND
- ② URP132 500m / 1600' AGL GND
- ③ URR542 100m / 300' AGL GND

BEARINGS AND TRACKS ARE MAGNETIC
ALTITUDES AND ELEVATIONS IN FEET
DISTANCES IN KILOMETRES

Alt set: -QNH(QFE on req);
-hPa(mm on req).