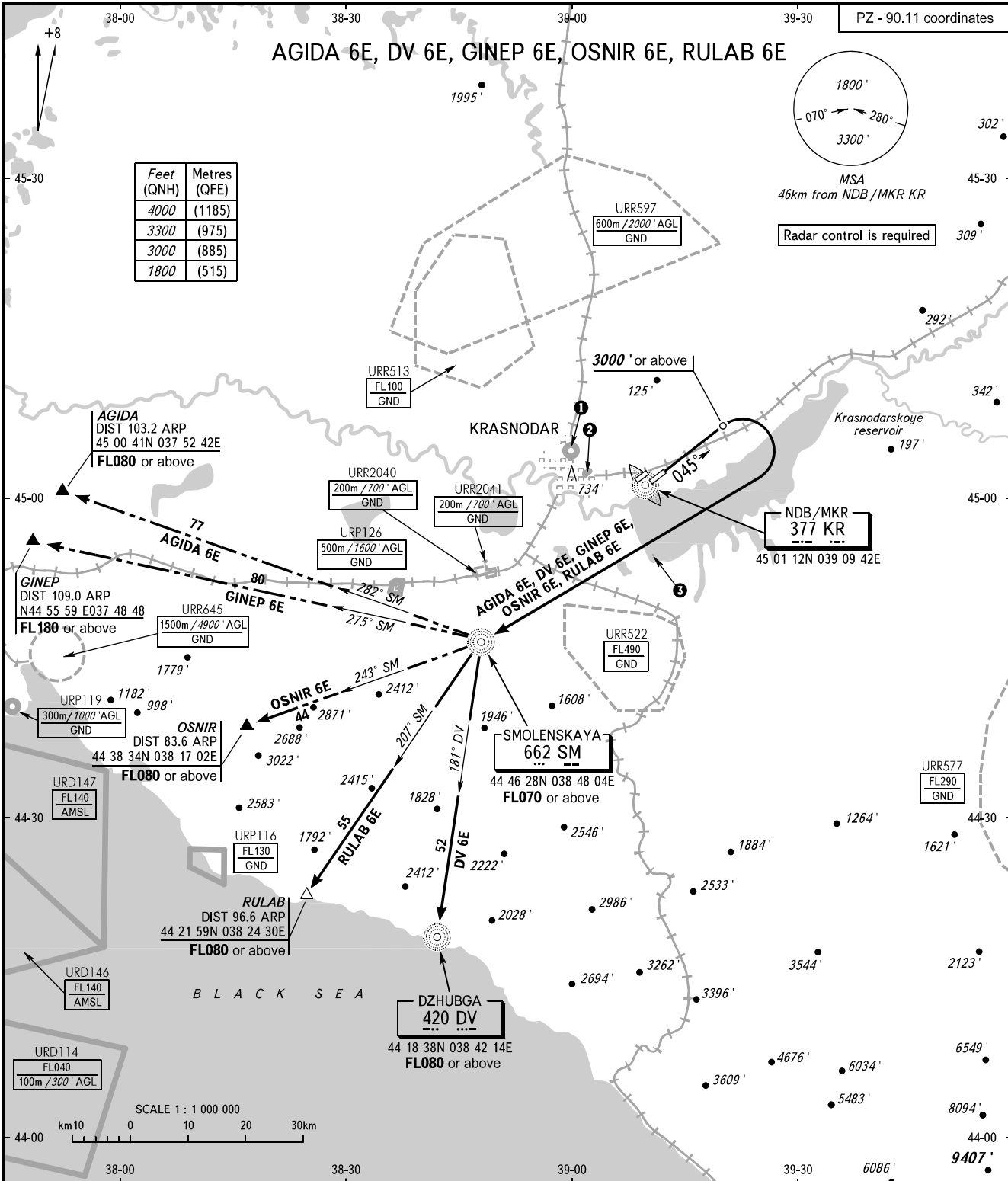


STANDARD DEPARTURE CHART  
INSTRUMENT (SID) - ICAO

TRANSITION  
ALTITUDE: 4000'

KRASNODAR, RUSSIA  
PASHKOVSKIY  
RWY 05R



TOWER 118.200  
RADAR 121.300  
APPROACH Sector WEST 127.700  
Sector EAST 129.600

**WARNING:**

1. Turn before passing DER is PROHIBITED.
2. The minimum climb gradient (required due to the airspace structure only) is 3.4% up to FL180 for SID GINEP 6E.

**NOTE**

ATC using facilities for surveillance of ACFT to avoid restricted area URR522 is required for SIDs AGIDA 6E, GINEP 6E, OSNIR 6E, RULAB 6E, DV 6E.

BEARINGS AND TRACKS ARE MAGNETIC  
ALTITUDES AND ELEVATIONS IN FEET  
DISTANCES IN KILOMETRES

Alt set: -QNH(QFE on req);  
-hPa(mm on req).

**1** URP128  
500m/1600' AGL  
GND

**2** URP132  
500m/1600' AGL  
GND

**3** URR542  
100m/300' AGL  
GND