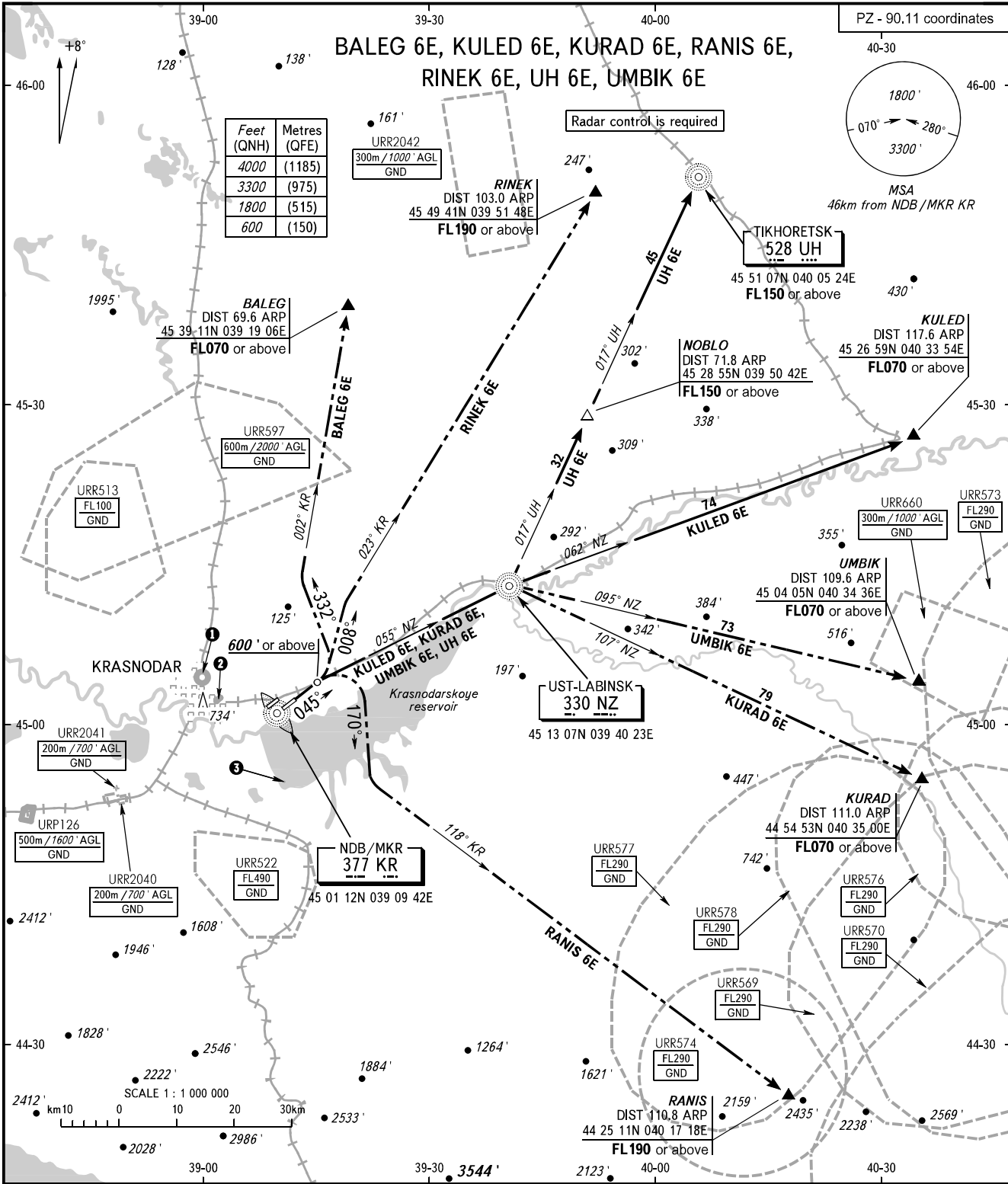


STANDARD DEPARTURE CHART  
INSTRUMENT (SID) - ICAO

TRANSITION  
ALTITUDE: 4000'

KRASNODAR, RUSSIA  
PASHKOVSKIY  
RWY 05R



TOWER 118.200  
RADAR 121.300  
APPROACH Sector WEST 127.700  
Sector EAST 129.600

1	URR128 500m / 1600' AGL GND	2	URR132 500m / 1600' AGL GND
3	URR542 100m / 300' AGL GND		

**WARNING:**  
1. Turn before passing DER is PROHIBITED.  
2. The minimum climb gradients (required due to the airspace structure only) are as follows:  
- 5.7% up to FL190 for SID RINEK 6E;  
- 6.2% up to FL150 for SID UH 6E;  
- 5.6% up to FL190 for SID RANIS 6E.  
**NOTE:**  
1. When URR574, URR577, URR569 are active, SID RANIS 6E is not AVBL.  
2. When URR577, URR578, URR569, URR576, URR573 are active, SID KURAD 6E is not AVBL.  
3. When URR578, URR573 are active, SID UMBIK 6E is not AVBL.

BEARINGS AND TRACKS ARE MAGNETIC  
ALTITUDES AND ELEVATIONS IN FEET  
DISTANCES IN KILOMETRES

Alt set: -QNH(QFE on req);  
-hPa(mm on req).

CHANGE: NIL