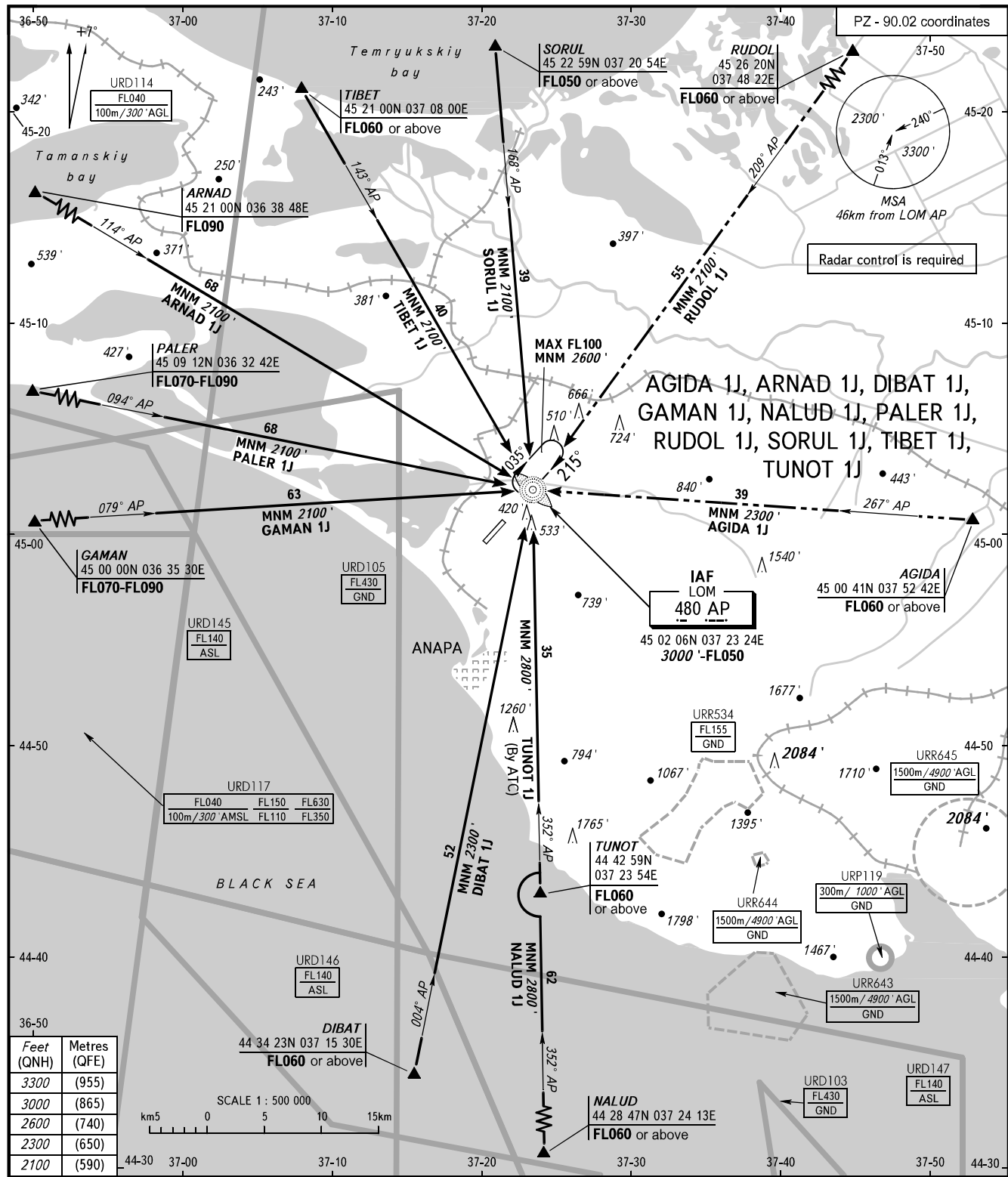


STANDARD ARRIVAL CHART
INSTRUMENT (STAR) - ICAO

TRANSITION
LEVEL: **FL050**

ANAPA, RUSSIA
VITYAZEVO
RWY 22



ANAPA KRUG **118.700**
ANAPA START **119.800**

WARNING
For ARNAD 1J, GAMAN 1J and PALER 1J - descend below FL050 before 25km from ARP.

BEARINGS AND TRACKS ARE MAGNETIC
ALTITUDES AND ELEVATIONS IN FEET
DISTANCES IN KILOMETRES

CHANGE: New chart