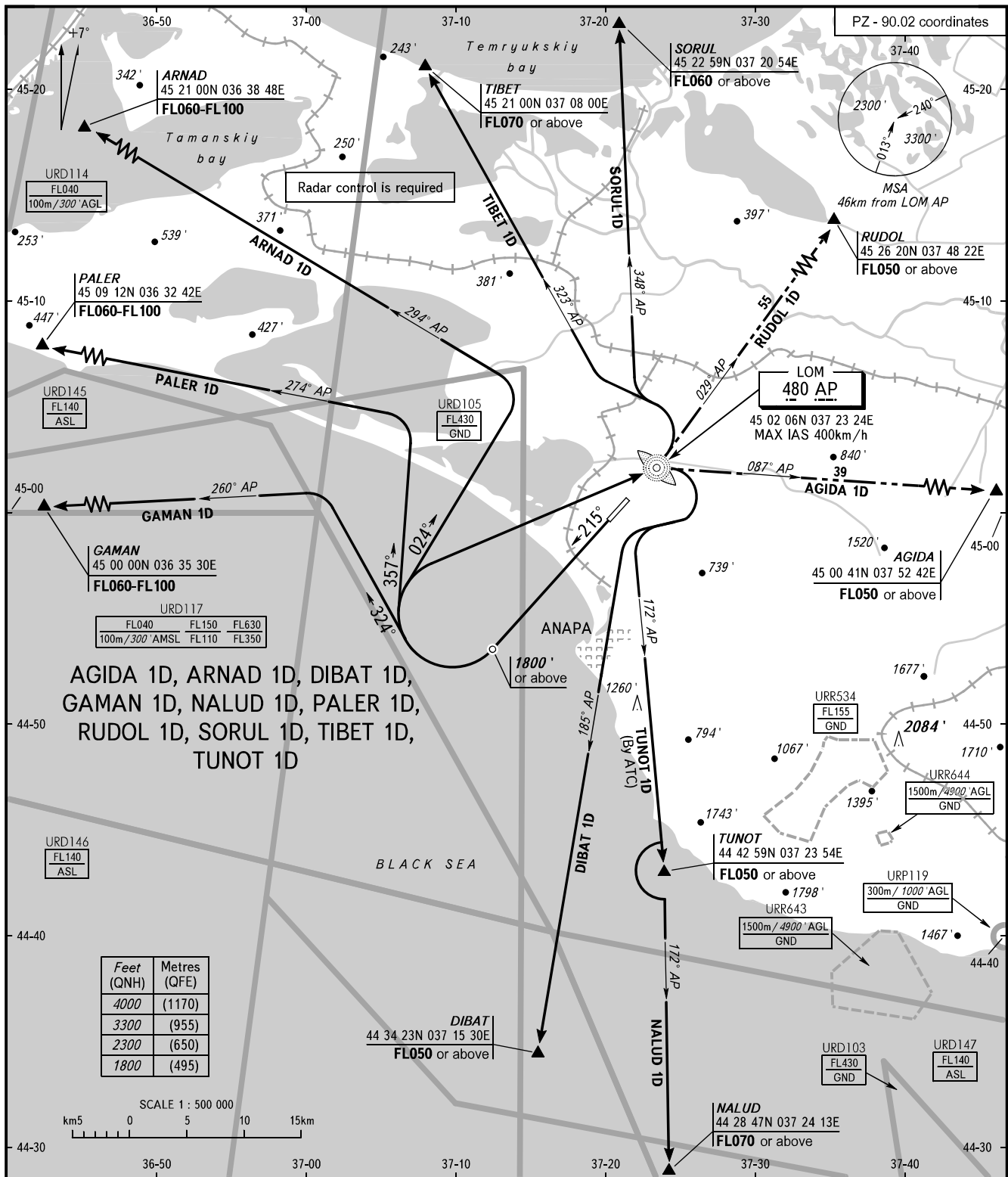


STANDARD DEPARTURE CHART  
INSTRUMENT (SID) - ICAO

TRANSITION  
ALTITUDE : 4000'

ANAPA, RUSSIA  
VITYAZEVO  
RWY 22



ANAPA START 119.800  
ANAPA KRUG 118.700

The minimum climb gradients required due to the airspace structure:  
- 3.4% up to FL050 for SID ARNAD 1D;  
- 4.7% up to FL050 for SID GAMAN 1D;  
- 4.0% up to FL050 for SID PALER 1D.

**WARNING:**

1. Turn before DER is PROHIBITED.
2. For SID ARNAD 1D, GAMAN 1D, PALER 1D - pass DIST 25km from ARP at FL050 or above.

BEARINGS AND TRACKS ARE MAGNETIC  
ALTITUDES AND ELEVATIONS IN FEET  
DISTANCES IN KILOMETRES