

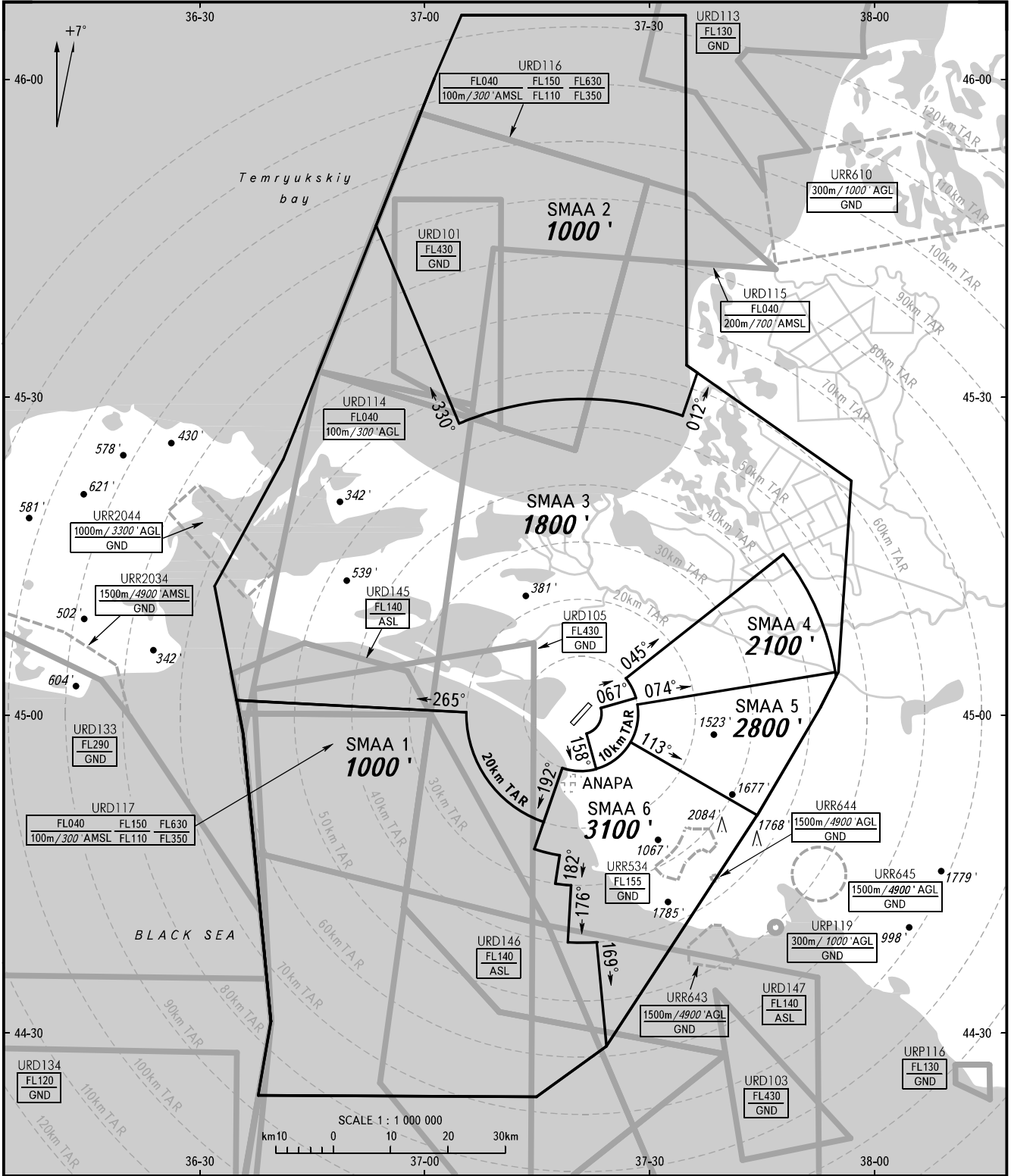
ATC SURVEILLANCE MINIMUM
ALTITUDE CHART - ICAO

ELEV
176'

TRANSITION ALTITUDE : **4000'**

ANAPA, RUSSIA

VITYAZEVO



ANAPA KRUG **118.700**
ANAPA START **119.800**

WARNING:

1. The chart may only be used for cross-checking of altitudes assigned while the aircraft is identified under radar control.
2. TEMPERATURE CORRECTION:
When vectoring is executed at low temperatures, the minimum vectoring altitudes must be corrected using altimeter temperature correction by ATC unit.

BEARINGS AND TRACKS ARE MAGNETIC
ALTITUDES AND ELEVATIONS IN FEET
DISTANCES IN KILOMETRES

CHANGE: New chart

ANAPA, RUSSIA
VITYAZEVO

SURVEILLANCE MINIMUM ALTITUDE AREAS		
IDENT	MNM ALT	LATERAL LIMITS (PZ-90.02 coordinates)
URKA SMAA 1	1000'	450115N 0363505E - 450015N 0370537E, then counterclockwise by arc of a circle radius of 20.0 km centred at (450008N 0372050E) to 444955N 0371554E - 444722N 0371440E, then counterclockwise by arc of a circle radius of 25.0 km centred at (450008N 0372050E) to 444647N 0371801E - 444406N 0371727E, then counterclockwise by arc of a circle radius of 30.0 km centred at (450008N 0372050E) to 444357N 0371932E - 443834N 0371906E, then counterclockwise by arc of a circle radius of 40.0 km centred at (450008N 0372050E) to 443835N 0372255E - 442836N 0372352E, then along Anapa/Vityazevo CTA boundary to 450115N 0363505E.
URKA SMAA 2	1000'	453300N 0373500E - 453217N 0373627E - 452813N 0373428E, then counterclockwise by arc of a circle radius of 55.5 km centred at (450008N 0372050E) to 452730N 0370431E - 454607N 0365314E, then along Anapa/Vityazevo CTA boundary to 453300N 0373500E.
URKA SMAA 3	1800'	450332N 0375446E, then counterclockwise by arc of a circle radius of 45.0 km centred at (450008N 0372050E) to 451507N 0374749E - 450328N 0372649E, then clockwise by arc of a circle radius of 10.0 km centred at (450008N 0372050E) to 450137N 0372809E - 450040N 0372328E, then clockwise by arc of a circle radius of 3.6 km centred at (450008N 0372050E) to 445815N 0372134E - 445455N 0372252E, then clockwise by arc of a circle radius of 10.0 km centred at (450008N 0372050E) to 445501N 0371822E - 444955N 0371554E, then clockwise by arc of a circle radius of 20.0 km centred at (450008N 0372050E) to 450015N 0370537E - 450115N 0363505E, then along Anapa/Vityazevo CTA boundary to 454607N 0365314E - 452730N 0370431E, then clockwise by arc of a circle radius of 55.5 km centred at (450008N 0372050E) to 452813N 0373428E - 453217N 0373627E.
URKA SMAA 4	2100'	451507N 0374749E, then clockwise by arc of a circle radius of 45.0 km centred at (450008N 0372050E) to 450358N 0375441E - 450100N 0372821E, then clockwise by arc of a circle radius of 10.0 km centred at (450008N 0372050E) to 445455N 0372252E - 445815N 0372134E, then counterclockwise by arc of a circle radius of 3.6 km centred at (450008N 0372050E) to 450040N 0372328E - 450137N 0372809E, then counterclockwise by arc of a circle radius of 10.0 km centred at (450008N 0372050E) to 450328N 0372649E - 461507N 0374749E.
URKA SMAA 5	2800'	450358N 0375441E, then clockwise by arc of a circle radius of 45.0 km centred at (450008N 0372050E) to 450332N 0375446E, then along Anapa/Vityazevo CTA boundary to 445031N 0374412E - 445726N 0372726E, then counterclockwise by arc of a circle radius of 10.0 km centred at (450008 N 0372050E) to 450100N 0372821E - 450358N 0375441E.
URKA SMAA 6	3100'	445726N 0372726E - 445031N 0374412E, then along Anapa/Vityazevo CTA boundary to 442836N 0372352E - 443835N 0372255E, then clockwise by arc of a circle radius of 40.0 km centred at (450008N 0372050E) to 443834N 0371906E - 444357N 0371932E, then clockwise by arc of a circle radius of 30.0 km centred at (450008N 0372050E) to 444406N 0371727E - 444647N 0371801E, then clockwise by arc of a circle radius of 25.0 km centred at (450008N 0372050E) to 444722N 0371440E - 445501N 0371822E, then counterclockwise by arc of a circle radius of 10.0 km centred at (450008N 0372050E) to 445726N 0372726E.