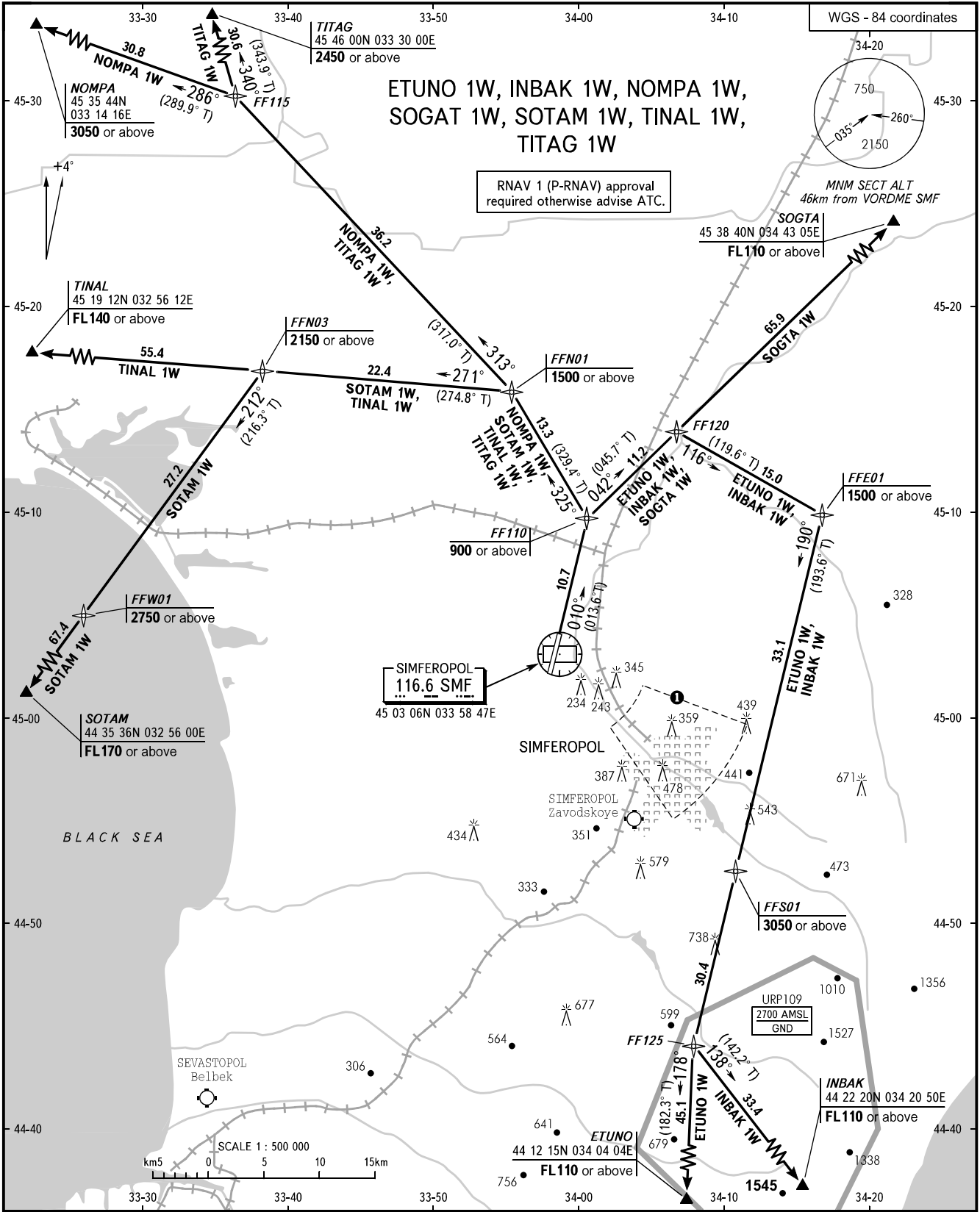


STANDARD DEPARTURE CHART
INSTRUMENT (SID) - ICAO

TRANSITION
ALT : 3050

SIMFEROPOL, RUSSIA
SIMFEROPOL
RNAV (GNSS) RWY 01



TOWER 120.800
RADAR 135.775
APPROACH 124.700

BEARINGS AND TRACKS ARE MAGNETIC
ALTITUDES, HEIGHTS AND ELEVATIONS ARE IN METRES
DISTANCES ARE IN KILOMETRES

Visual manoeuvring (circling) and visual approach not authorized below 900m within sector from R105° to R140°, from D8.0km to D18.0km SMF VORDME.

- WARNING:**
1. Minimum climb gradient is 7.0% up to 900m.
 2. If unable to comply departure procedures advise ATC.
 3. Restricted areas, active by NOTAM, are published in AIP ENR 5 section, AD 2.1 URFF-57.

CHANGE.COM