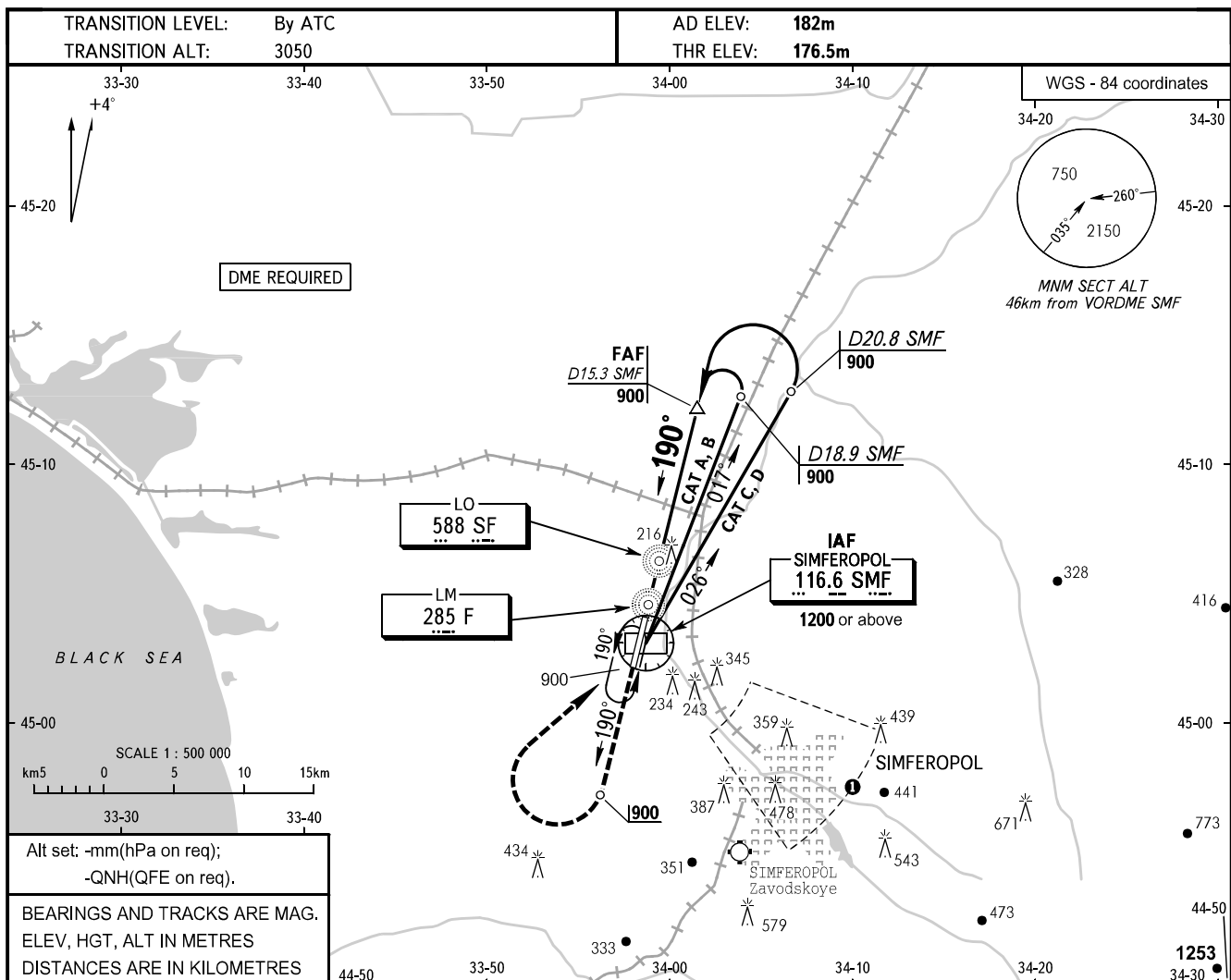


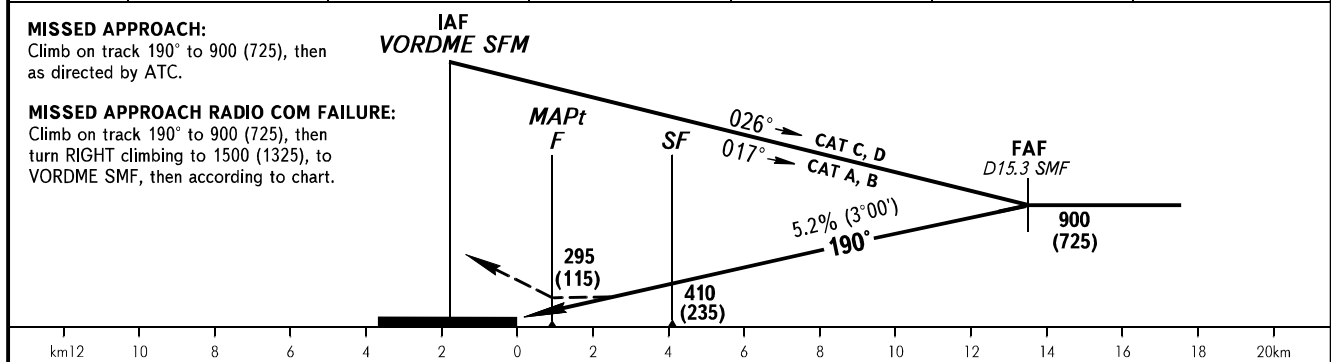
**INSTRUMENT
APPROACH
CHART - ICAO**

RADAR TOWER	135.775
TOWER	120.800

**SIMFEROPOL, RUSSIA
SIMFEROPOL
NDB RWY 19**



DME SMF	4.0	6.0	8.0	10.0	12.0	14.0
DIST THR	2.19	4.20	6.21	8.21	10.21	12.21
ALT(HGT)	310 (135)	415 (240)	520 (345)	625 (450)	730 (555)	835 (660)



OCA(H)		A	B	C	D				
Straight-in	NDB F	295(115)	295(115)	295(115)	295(115)				
	Approach								
Circling		325(150)	335(160)	465(290)	465(290)				
GROUND SPEED	km/h	150	180	210	240	270	300	330	360
FAF-MAPt 12565m	min:sec	5.02	4.11	3.35	3.08	2.48	2.31	2.17	2.06
RATE OF DESCENT	m/s	2.2	2.6	3.1	3.5	3.9	4.4	4.8	5.2

Visual manoeuvring (circling) and visual approach not authorized below 900m within sector from R105° to R140°, from D8.0km to D18.0km SMF VORDME.

WARNING:

- Be aware of military airfield Gvardeyskoye situated north of aerodrome. Don't mix up RWY.
- Speed restriction: MAX IAS 407km/h at IAF VORDME SFM.
- Timing not authorized for defining MAPt.
- Restricted areas, active by NOTAM, are published in AIP ENR 5 section, AD 2.1 URFF-57.