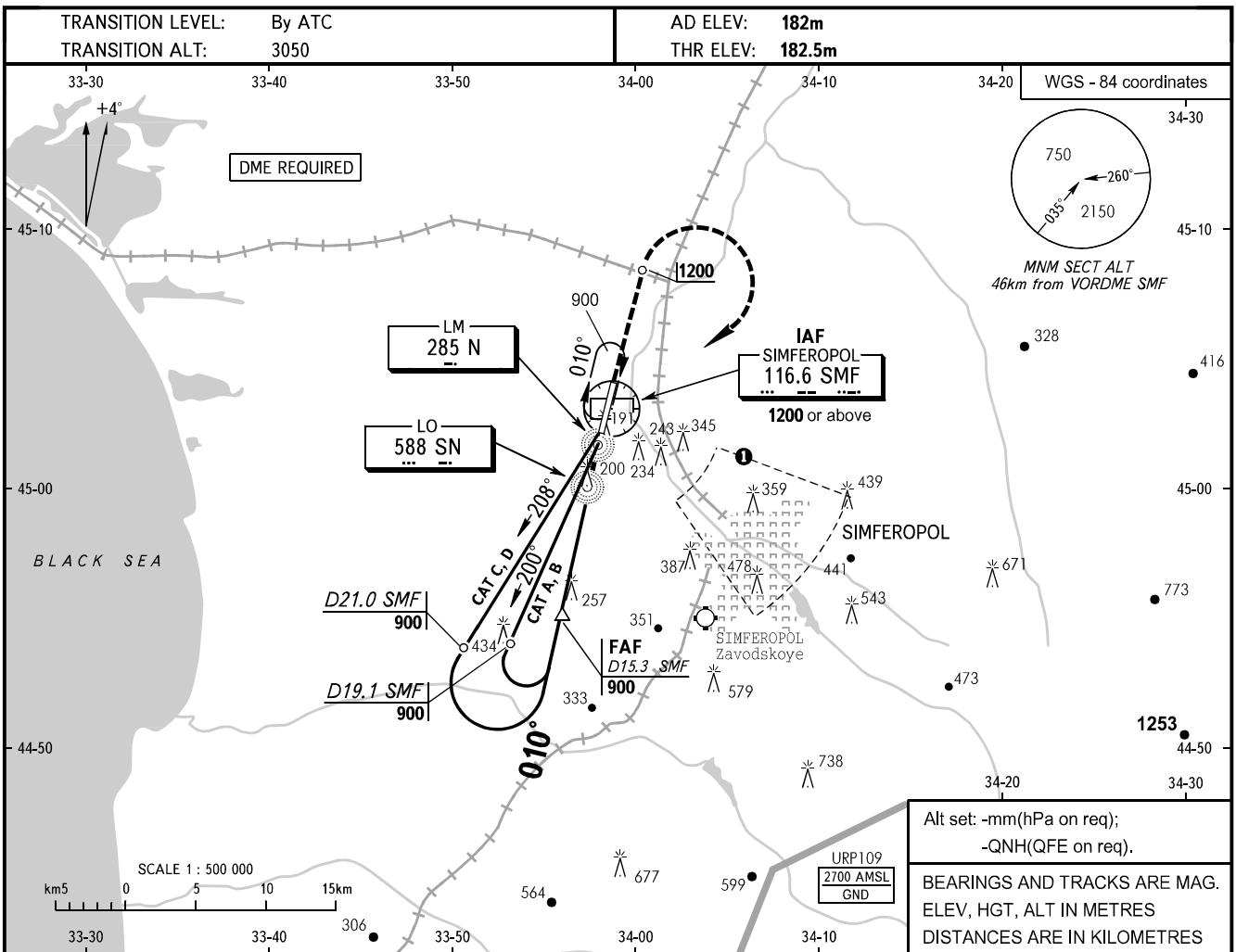


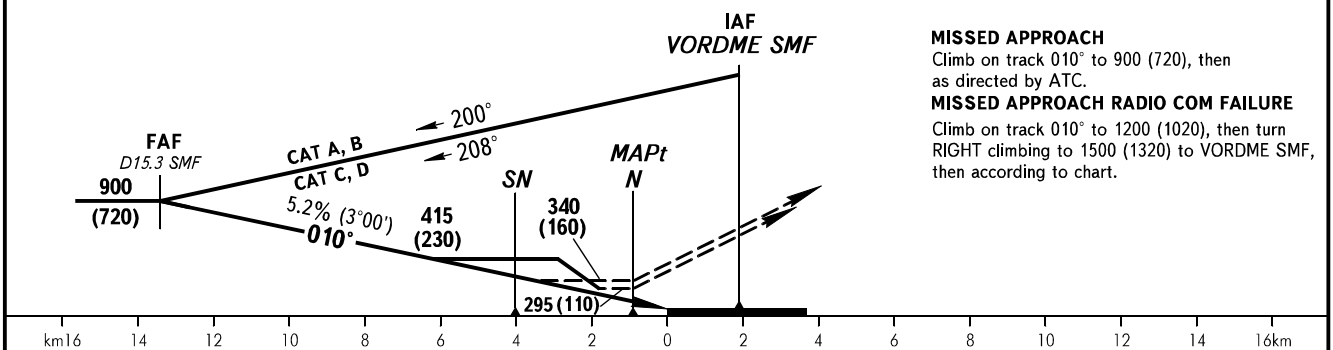
**INSTRUMENT
APPROACH
CHART - ICAO**

RADAR TOWER	135.775
TOWER	120.800

SIMFEROPOL, RUSSIA
SIMFEROPOL
NDB RWY 01



DME SMF	14.0	12.0	10.0	8.0	6.0	4.0
DIST THR	12.07	10.07	8.07	6.06	4.06	2.05
ALT (HGT)	835 (650)	730 (545)	625 (440)	520 (335)	415 (230)	310 (125)



OCA(H)		A	B	C	D
Straight-in	NDB	340(160)	340(160)	340(160)	340(160)
	NDB with SDF LOM	295(110)	295(110)	295(110)	295(110)
Circling		340(160)	340(160)	465(285)	465(285)

Visual manoeuvring (circling) and visual approach not authorized below 900m within sector from R105° to R140°, from D8.0km to D18.0km SMF VORDME.

WARNING:

- Speed restriction: MAX IAS 407km/h at IAF VORDME SMF.
- Timing not authorized for defining MAPt.
- Restricted areas, active by NOTAM, are published in AIP ENR 5 section, AD 2.1 URFF-57.

GROUND SPEED	km/h	150	180	210	240	270	300	330	360
FAF - MAPt 12470 m	min:sec	4.59	4.10	3.34	3.07	2.46	2.30	2.16	2.05
RATE OF DESCENT	m/s	2.2	2.6	3.1	3.5	3.9	4.4	4.8	5.2

CHANGE: COM