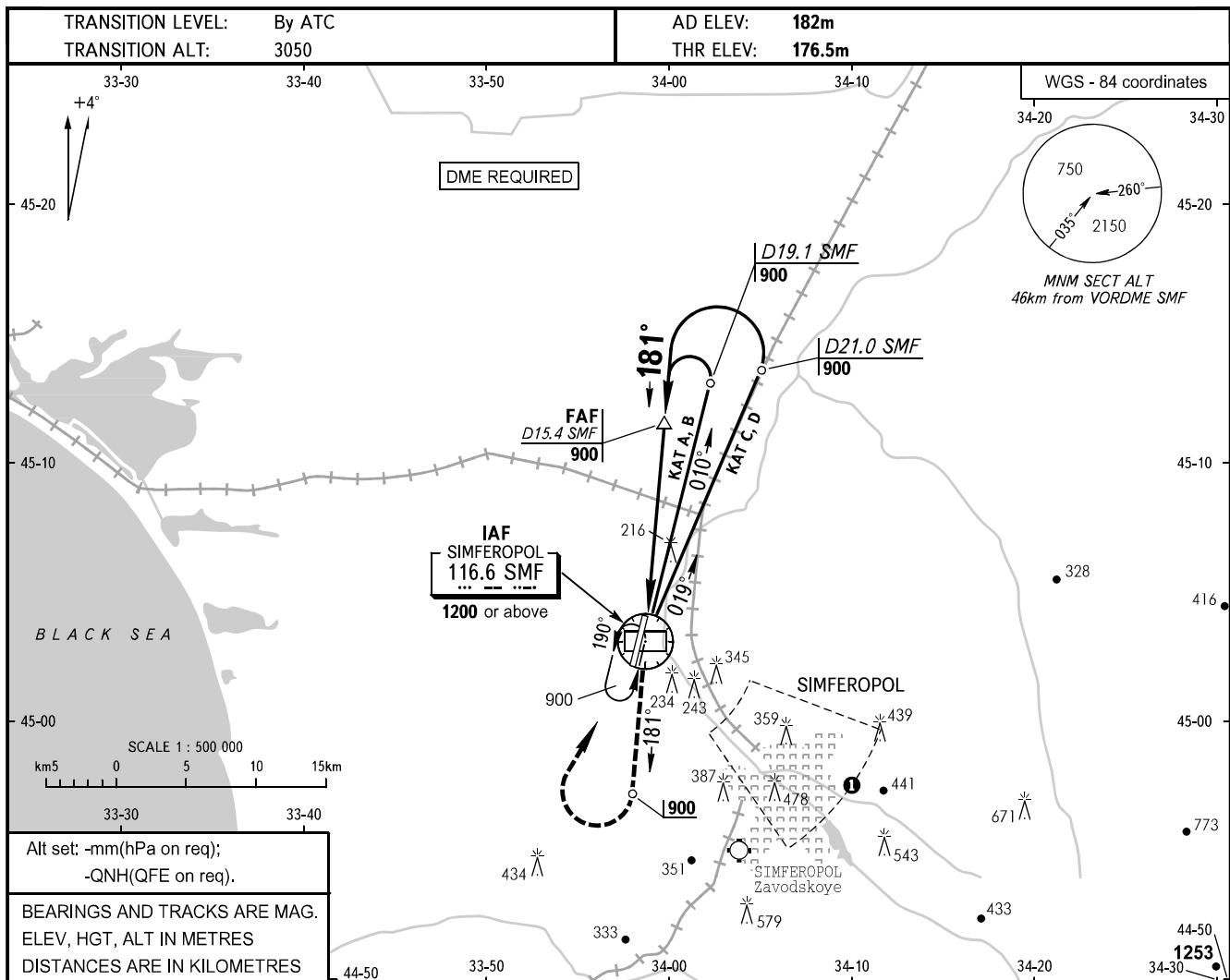


**INSTRUMENT
APPROACH
CHART - ICAO**

RADAR	135.775
TOWER	120.800

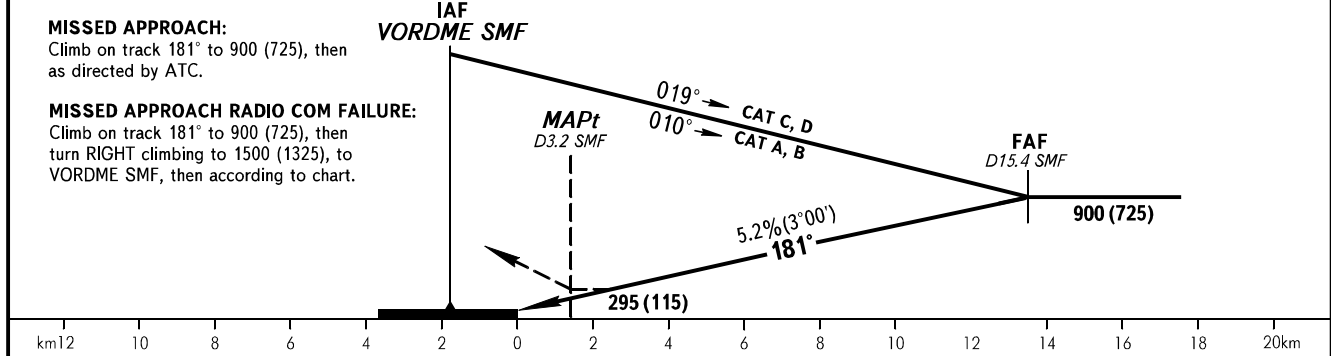
SIMFEROPOL, RUSSIA
SIMFEROPOL
VOR RWY 19



Alt set: -mm(hPa on req);
-QNH(QFE on req).

BEARINGS AND TRACKS ARE MAG.
ELEV, HGT, ALT IN METRES
DISTANCES ARE IN KILOMETRES

DME SMF	4.0	6.0	8.0	10.0	12.0	14.0
DIST THR	2.19	4.19	6.19	8.19	10.19	12.19
ALT (HGT)	310 (135)	415 (235)	520 (340)	625 (445)	730 (555)	835 (655)



OCA(H)		A	B	C	D	<p>1 Visual manoeuvring (circling) and visual approach not authorized below 900m within sector from R105° to R140°, from D8.0km to D18.0km SMF VORDME.</p> <p>WARNING:</p> <ol style="list-style-type: none"> 1. Be aware of military airfield Gvardeyskoye situated north of aerodrome. Don't mix up RWY. 2. Speed restriction: MAX IAS 407km/h at IAF VORDME SMF. 3. Timing not authorized for defining MAPt. 5. Restricted areas, active by NOTAM, are published in AIP ENR 5 section, AD 2.1 URFF-57. 					
Straight-in	Approach	295(115)	295(115)	305(125)	310(130)						
	Circling	325(150)	335(160)	465(290)	465(290)						
GROUND SPEED	km/h	150	180	210	240	270	300	330	360		
FAF-MAPt 12230m	min:sec	4.54	4.05	3.30	3.03	2.43	2.27	2.13	2.02		
RATE OF DESCENT	m/s	2.2	2.6	3.1	3.5	3.9	4.4	4.8	5.2		