

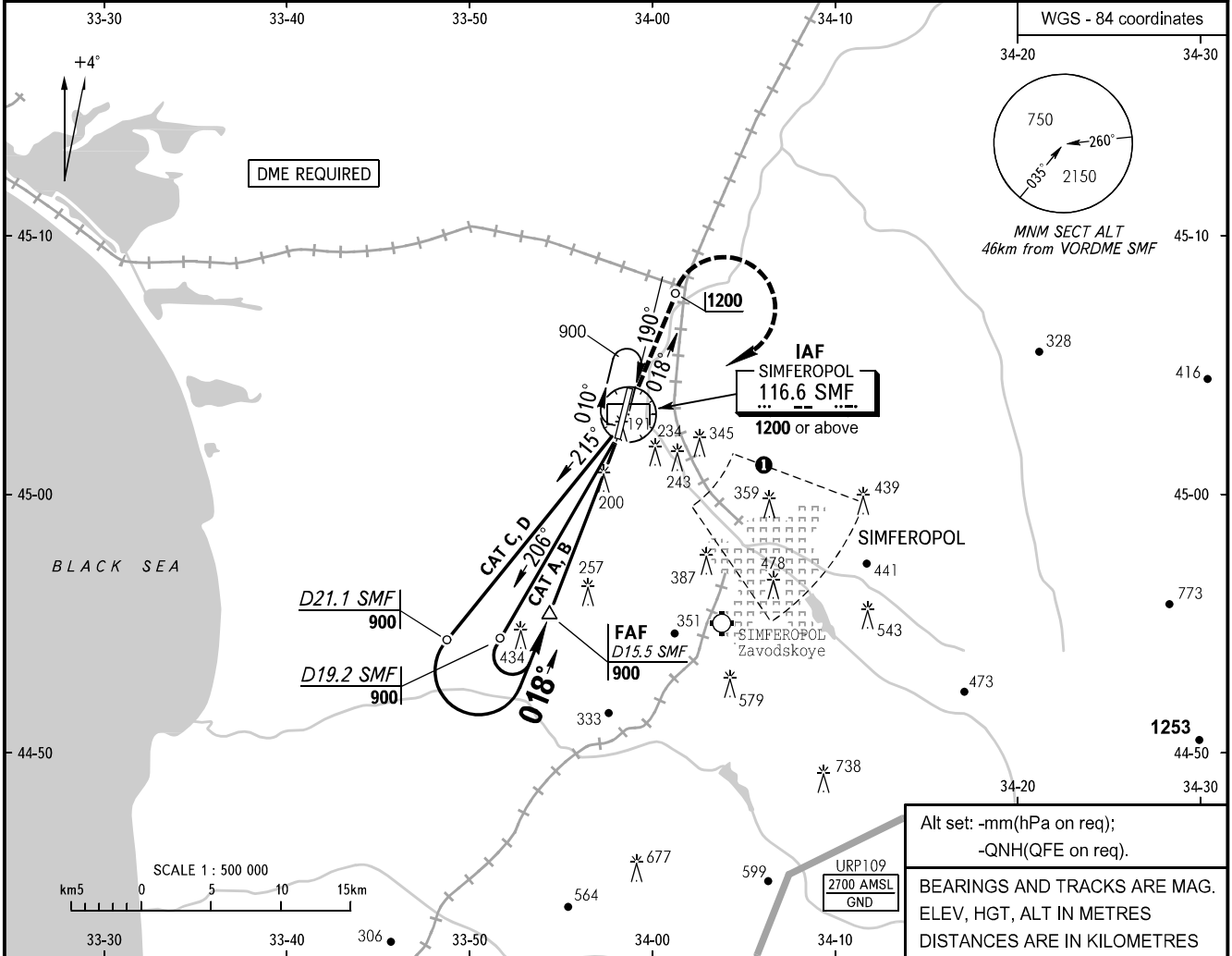
**INSTRUMENT  
APPROACH  
CHART - ICAO**

**SIMFEROPOL, RUSSIA  
SIMFEROPOL  
VOR RWY 01**

RADAR **135.775**  
TOWER **120.800**

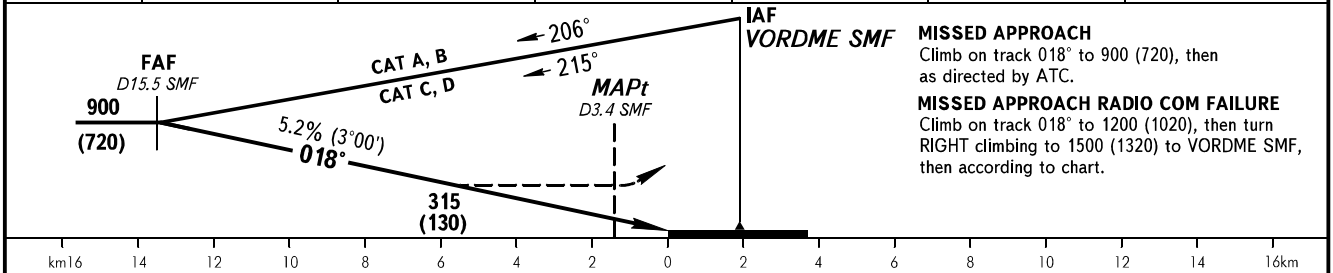
TRANSITION LEVEL: by ATC  
TRANSITION ALT: 3050

AD ELEV: **182m**  
THR ELEV: **182.5m**



Alt set: -mm(hPa on req);  
-QNH(QFE on req).  
BEARINGS AND TRACKS ARE MAG.  
ELEV, HGT, ALT IN METRES  
DISTANCES ARE IN KILOMETRES

DME SMF	14	12	10	8	6	4
THR DISTANCE	12.04	10.04	8.04	6.04	4.04	2.04
ALT (HGT)	830(650)	725(545)	620(440)	515(335)	410(230)	305(125)



OCA(H)	A	B	C	D
Straight-in	315(130)	315(130)	315(130)	315(130)
Approach				
Circling	325(145)	335(155)	465(285)	465(285)

**1** Visual manoeuvring (circling) and visual approach not authorized below 900m within sector from R105° to R140°, from D8.0km to D18.0km SMF VORDME.  
**WARNING:**  
1. Speed restriction: MAX IAS 407km/h at IAF VORDME SMF.  
2. Timing not authorized for defining MAPt.  
3. Restricted areas, active by NOTAM, are published in AIP ENR 5 section, AD 2.1 URFF-57.

GROUND SPEED	km/h	150	180	210	240	270	300	330	360
FAF-MAPt 12100m	min:sec	4.50	4.02	3.27	3.02	2.41	2.25	2.12	2.01
RATE OF DESCENT	m/s	2.2	2.6	3.0	3.5	3.9	4.4	4.8	5.2

CHANGE.COM