

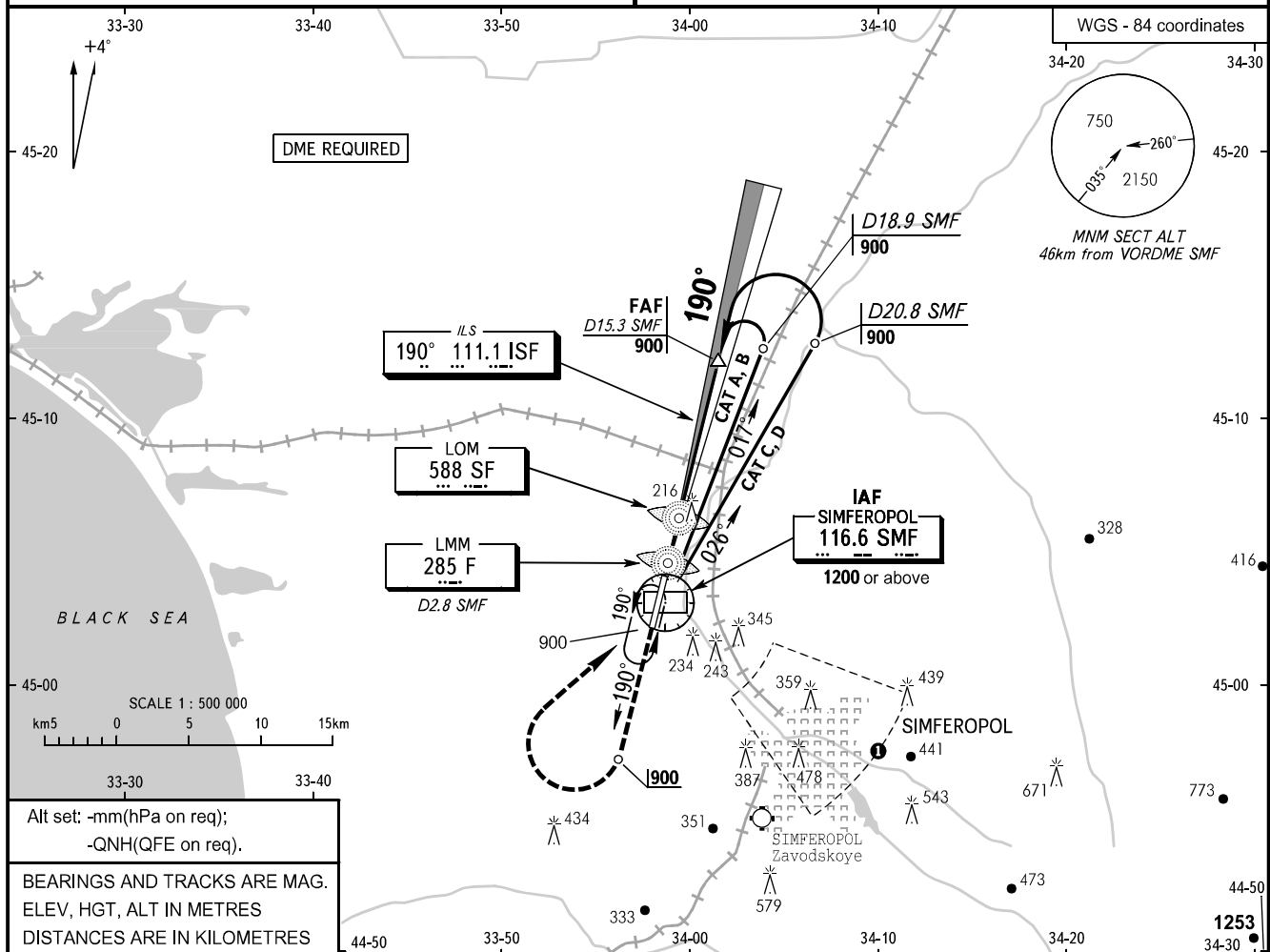
**INSTRUMENT
APPROACH
CHART - ICAO**

**SIMFEROPOL, RUSSIA
SIMFEROPOL
ILS, LOC RWY 19**

RADAR TOWER 135.775
120.800

TRANSITION LEVEL: By ATC
TRANSITION ALT: 3050

AD ELEV: 182m
THR ELEV: 176.5m



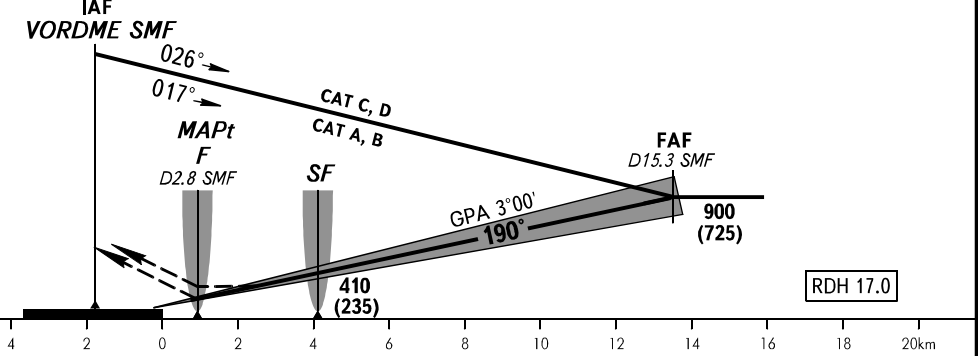
Alt set: -mm(hPa on req);
-QNH(QFE on req).

BEARINGS AND TRACKS ARE MAG.
ELEV, HGT, ALT IN METRES
DISTANCES ARE IN KILOMETRES

DME SMF	4.0	6.0	8.0	10.0	12.0	14.0
DIST THR	2.19	4.20	6.21	8.21	10.21	12.21
ALT(HGT)	310 (135)	415 (240)	520 (345)	625 (450)	730 (555)	835 (660)

MISSED APPROACH:
Climb on track 190° to 900 (725), then as directed by ATC.

MISSED APPROACH COM FAILURE:
Climb on track 190° to 900 (725), then turn RIGHT climbing to 1500 (1325), to VORDME SMF, then according to chart.



OCA(H)		A	B	C	D					
Straight-in	CAT I	227(51)	230(54)	233(57)	236(60)					
	LOC	295(115)	295(115)	295(115)	295(115)					
Approach										
Circling		325(150)	335(160)	465(290)	465(290)					
GROUND SPEED	km/h	150	180	210	240	270	300	330	360	
FAF-THR 13495m	min:sec	5.24	4.30	3.51	3.22	2.60	2.42	2.27	2.15	
RATE OF DESCENT (Grad 5.2%)	m/s	2.2	2.6	3.1	3.5	3.9	4.4	4.8	5.2	

Visual manoeuvring (circling) and visual approach not authorized below 900m within sector from R105° to R140°, from D8.0km to D18.0km SMF VORDME.

WARNING:

1. Be aware of military airfield Gvardeyskoye situated north of aerodrome. Don't mix up RWY.
2. Speed restriction: MAX IAS 407km/h at IAF VORDME SMF.
3. For LOC approach MAPt at LMM F or D2.8 SMF.
4. Timing not authorized for defining MAPt.
5. Restricted areas, active by NOTAM, are published in AIP ENR 5 section, AD 2.1 URFF-57.