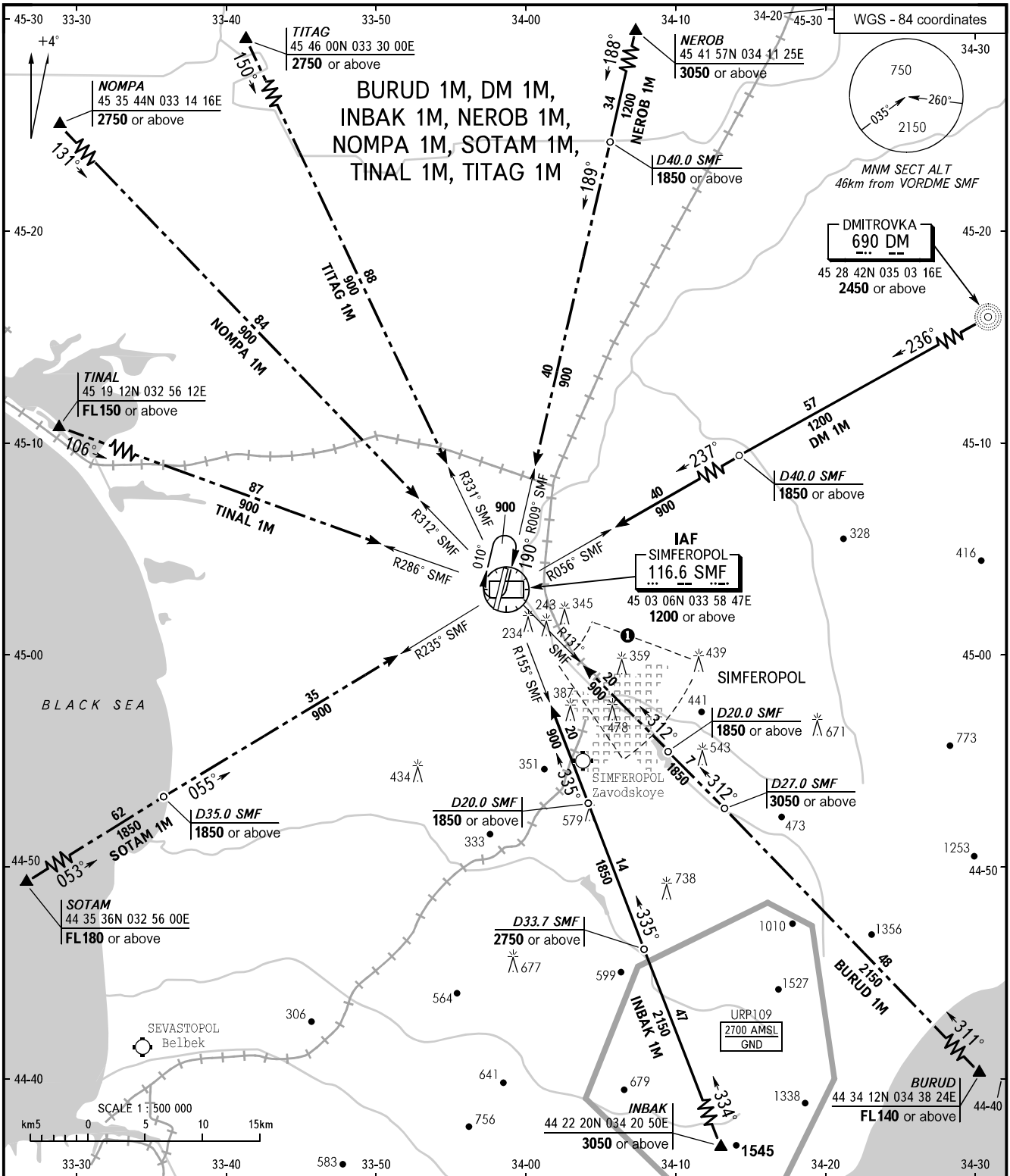


STANDARD ARRIVAL CHART
INSTRUMENT (STAR) - ICAO

TRANSITION
LEVEL : By ATC

SIMFEROPOL, RUSSIA
SIMFEROPOL
RWY 01



APPROACH 124.700
RADAR 135.775
TOWER 120.800

① Visual manoeuvring (circling) and visual approach not authorized below 900m within sector from R105° to R140°, from D8.0km to D18.0km SMF VORDME.

WARNING:

1. Do not descend below vertical limits of P, R, D areas until appropriate ATS instruction is given.
2. Speed restriction: MAX IAS 465km/h at or BLW FL100 (3050m).
3. Speed restriction: MAX IAS 407km/h at IAF VORDME SMF.
4. Restricted areas, active by NOTAM, are published in AIP ENR 5 section, AD 2.1 URFF-57.

BEARINGS AND TRACKS ARE MAGNETIC
ALTITUDES, HEIGHTS AND ELEVATIONS ARE IN METRES
DISTANCES ARE IN KILOMETRES