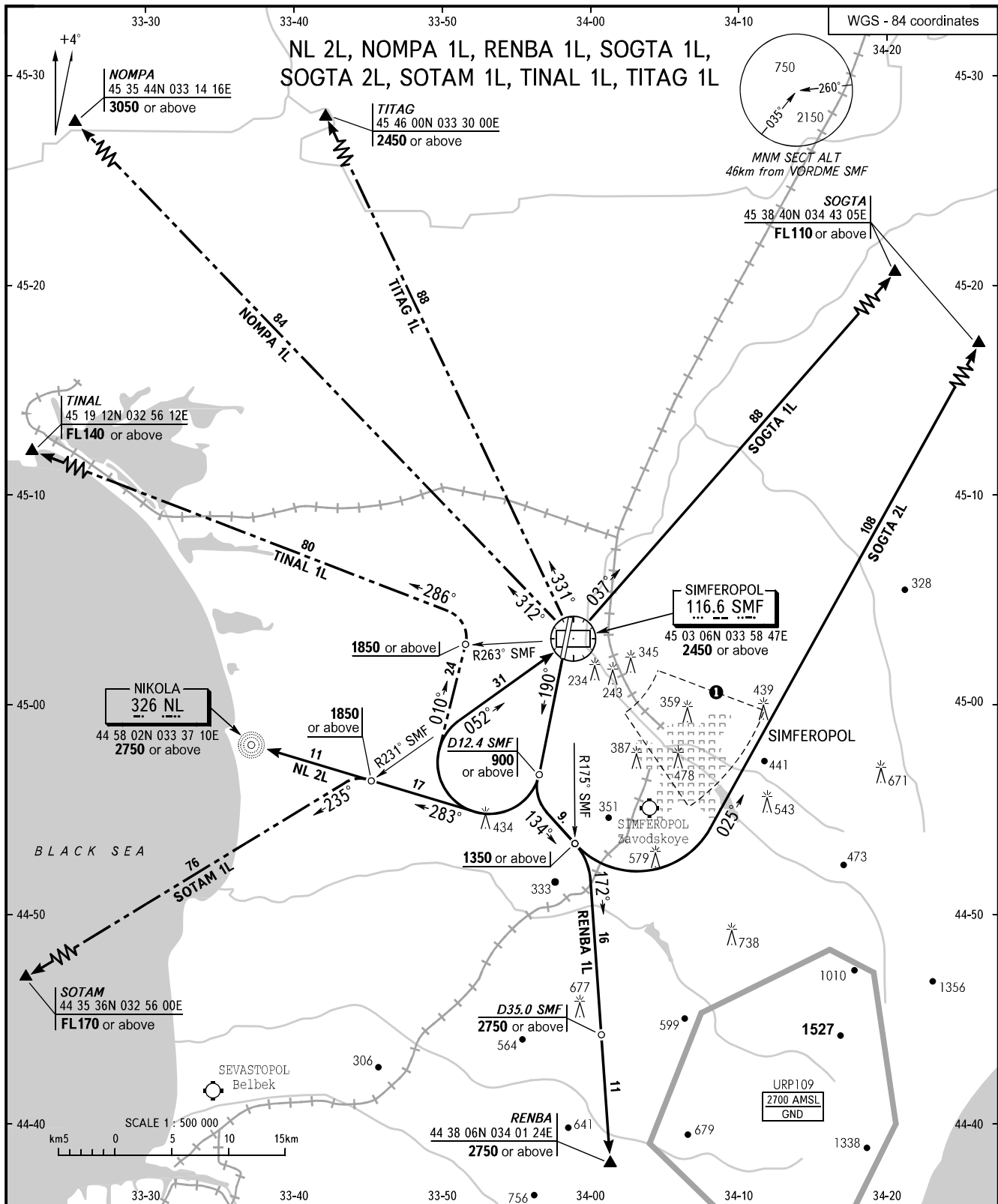


STANDARD DEPARTURE CHART  
INSTRUMENT (SID) - ICAO

TRANSITION  
ALT : 3050

SIMFEROPOL, RUSSIA  
SIMFEROPOL  
RWY 19



TOWER 120.800  
RADAR 135.775  
APPROACH 124.700

① Visual manoeuvring (circling) and visual approach not authorized below 900m within sector from R105° to R140°, from D8.0km to D18.0km SMF VORDME.

**WARNING:**

1. Statistical data of ACFT performance are used for determination of the average flight path of the SID procedures.
2. Minimum climb gradient for NOMPA 1L, SOGTA 1L, 2L and TITAG 1L 5.5% up to 2450m.
3. Minimum climb gradient for SOTAM 1L 6.0% up to 1850m.
4. Minimum climb gradient for RENBA 1L 7.0% up to 2750m.
5. Minimum climb gradient for SOGTA 1L 7.5% up to 2750m.
6. If unable to comply departure procedures advise ATC.
7. Restricted areas, active by NOTAM, are published in AIP ENR 5 section, AD 2.1 URFF-57.

BEARINGS AND TRACKS ARE MAGNETIC  
ALTITUDES, HEIGHTS AND ELEVATIONS ARE IN METRES  
DISTANCES ARE IN KILOMETRES