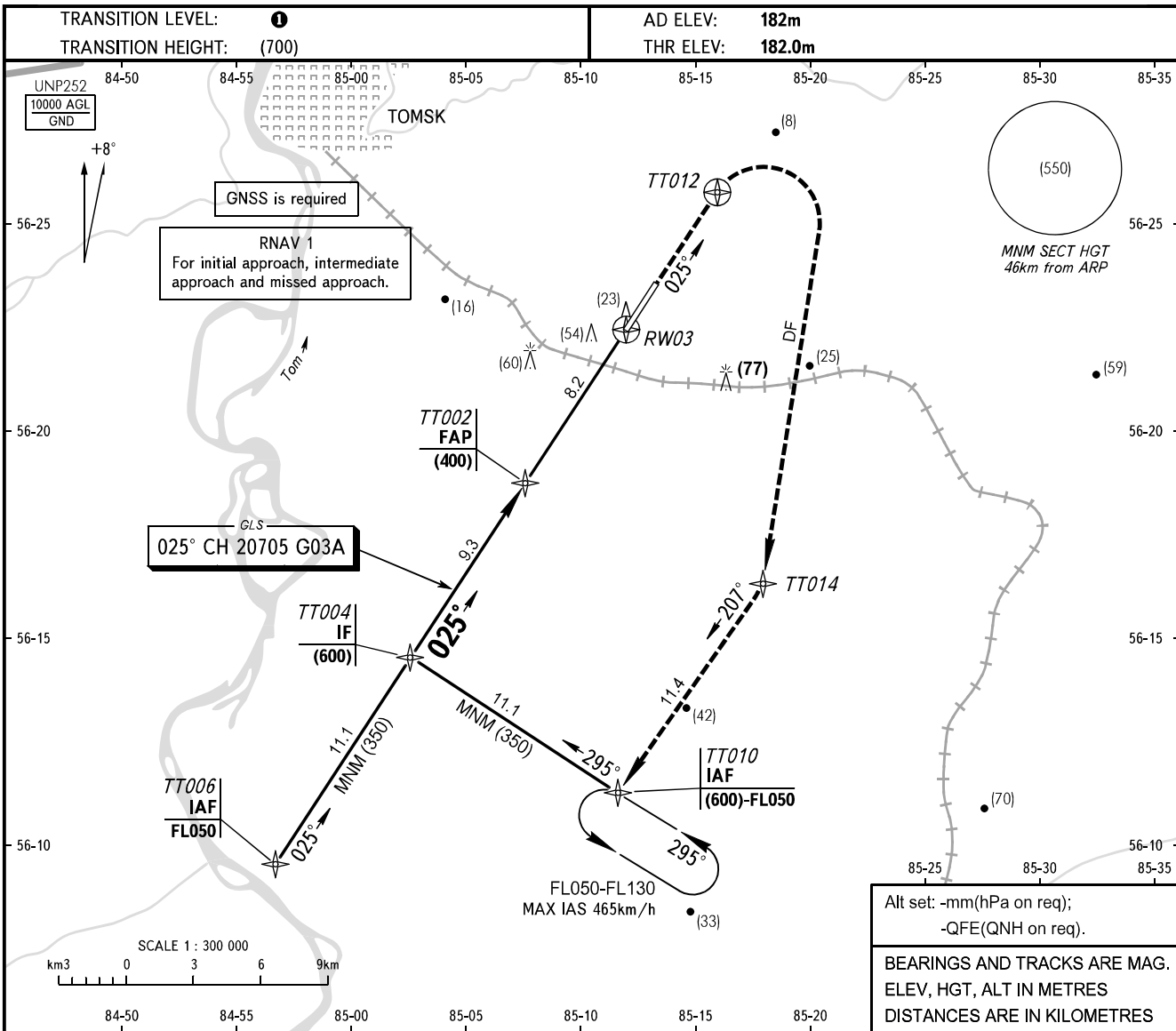


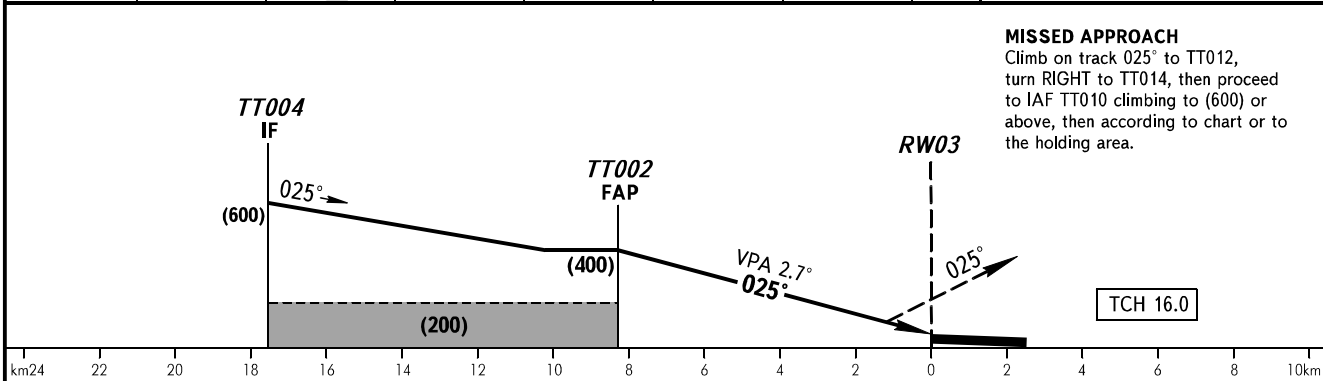
**INSTRUMENT  
APPROACH  
CHART - ICAO**

TOMSK TOWER 127.300

**TOMSK, RUSSIA**  
BOGASHEVO  
GLS RWY 03



Alt set: -mm(hPa on req);  
-QFE(QNH on req).  
BEARINGS AND TRACKS ARE MAG.  
ELEV, HGT, ALT IN METRES  
DISTANCES ARE IN KILOMETRES



**MISSED APPROACH**  
Climb on track 025° to TT012, turn RIGHT to TT014, then proceed to IAF TT010 climbing to (600) or above, then according to chart or to the holding area.

OCA(H)	A	B	C	D
Straight-in Approach	243(61)	246(64)	251(69)	254(72)
Circling	330(145)	335(150)	380(200)	395(210)

**① TRANSITION LEVEL:**  
- FL040 when atmospheric pressure is 743mm mercury column or above;  
- FL050 when atmospheric pressure is less than 743mm mercury column.

GROUND SPEED	km/h	150	180	210	240	270	300	330	360	390
RATE OF DESCENT	m/s	2.0	2.3	2.7	3.1	3.5	3.9	4.3	4.7	5.1

CHANGE: New chart