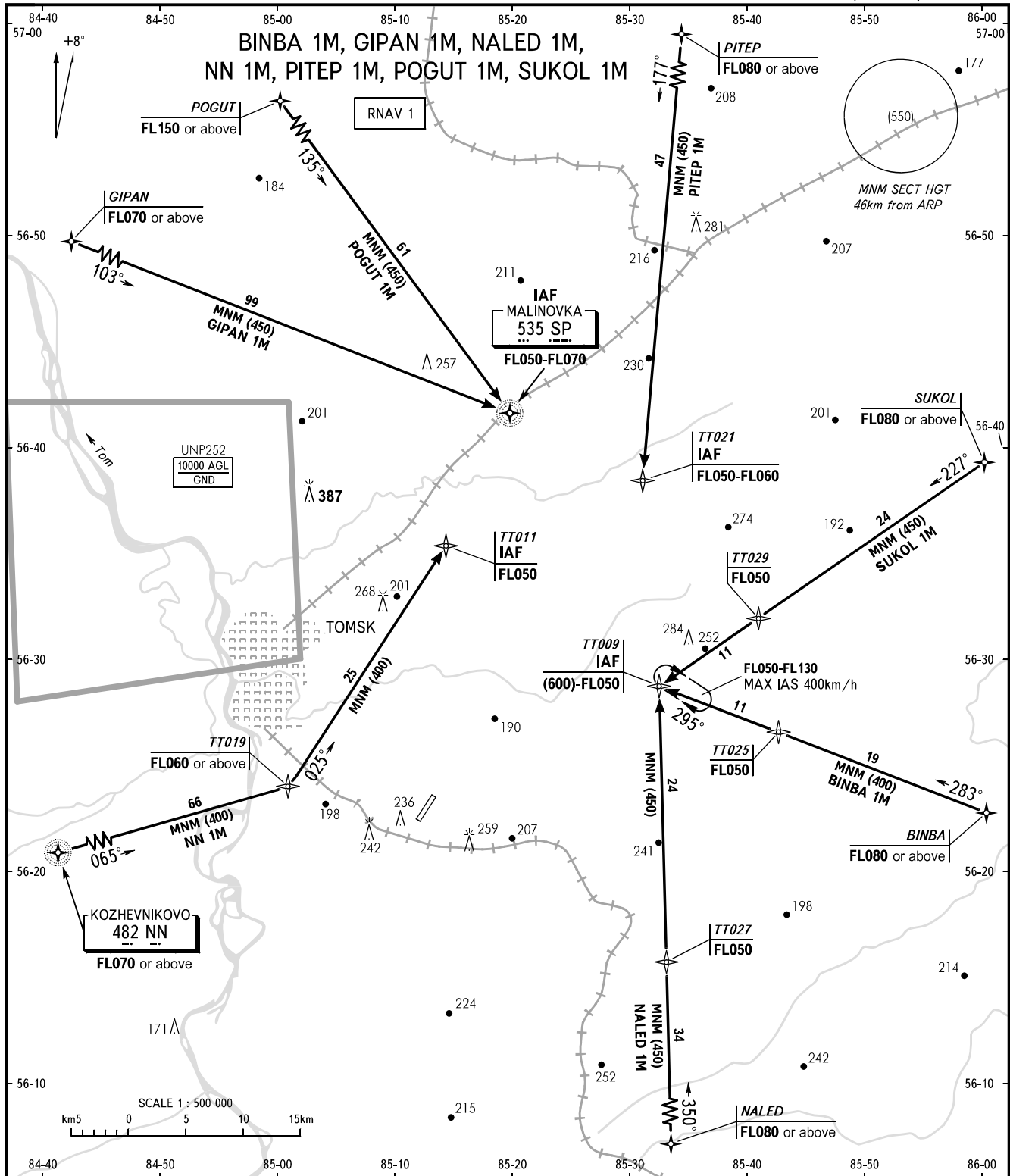


STANDARD ARRIVAL CHART  
INSTRUMENT (STAR) - ICAO

TOMSK, RUSSIA  
BOGASHEVO  
RNAV (GNSS) RWY 21

TRANSITION  
LEVEL: ①



TOMSK TOWER 127.300

① TRANSITION LEVEL:  
- FL040 when atmospheric pressure is 743mm mercury column or above;  
- FL050 when atmospheric pressure is less than 743mm mercury column.

BEARINGS AND TRACKS ARE MAGNETIC  
ALTITUDES, HEIGHTS AND ELEVATIONS ARE IN METRES  
DISTANCES ARE IN KILOMETRES