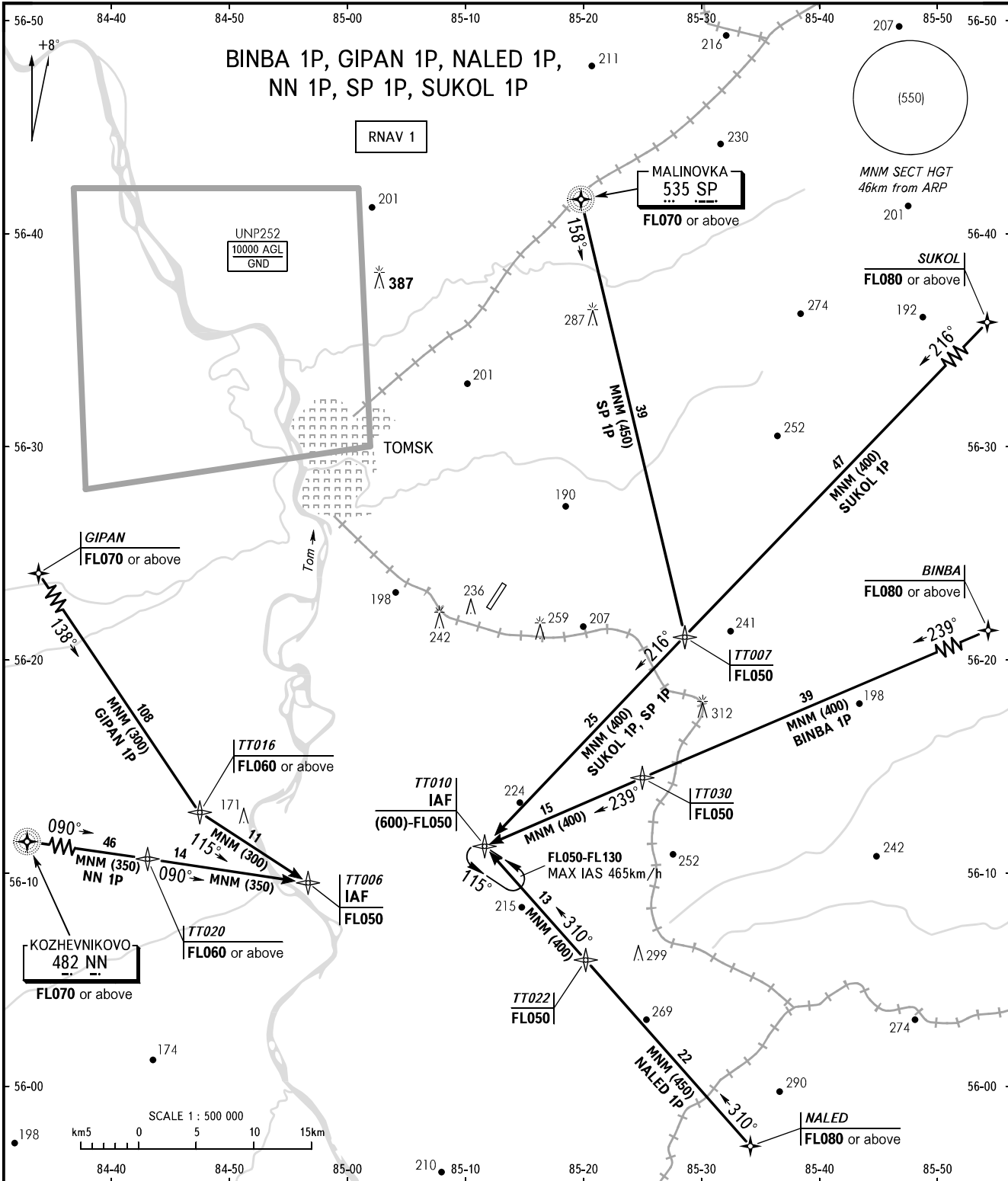


STANDARD ARRIVAL CHART
INSTRUMENT (STAR) - ICAO

TOMSK, RUSSIA
BOGASHEVO
RNAV (GNSS) RWY 03

TRANSITION
LEVEL: **1**



TOMSK TOWER 127.300

1 TRANSITION LEVEL:
 - FL040 when atmospheric pressure is 743mm mercury column or above;
 - FL050 when atmospheric pressure is less than 743mm mercury column.

BEARINGS AND TRACKS ARE MAGNETIC
ALTITUDES, HEIGHTS AND ELEVATIONS ARE IN METRES
DISTANCES ARE IN KILOMETRES