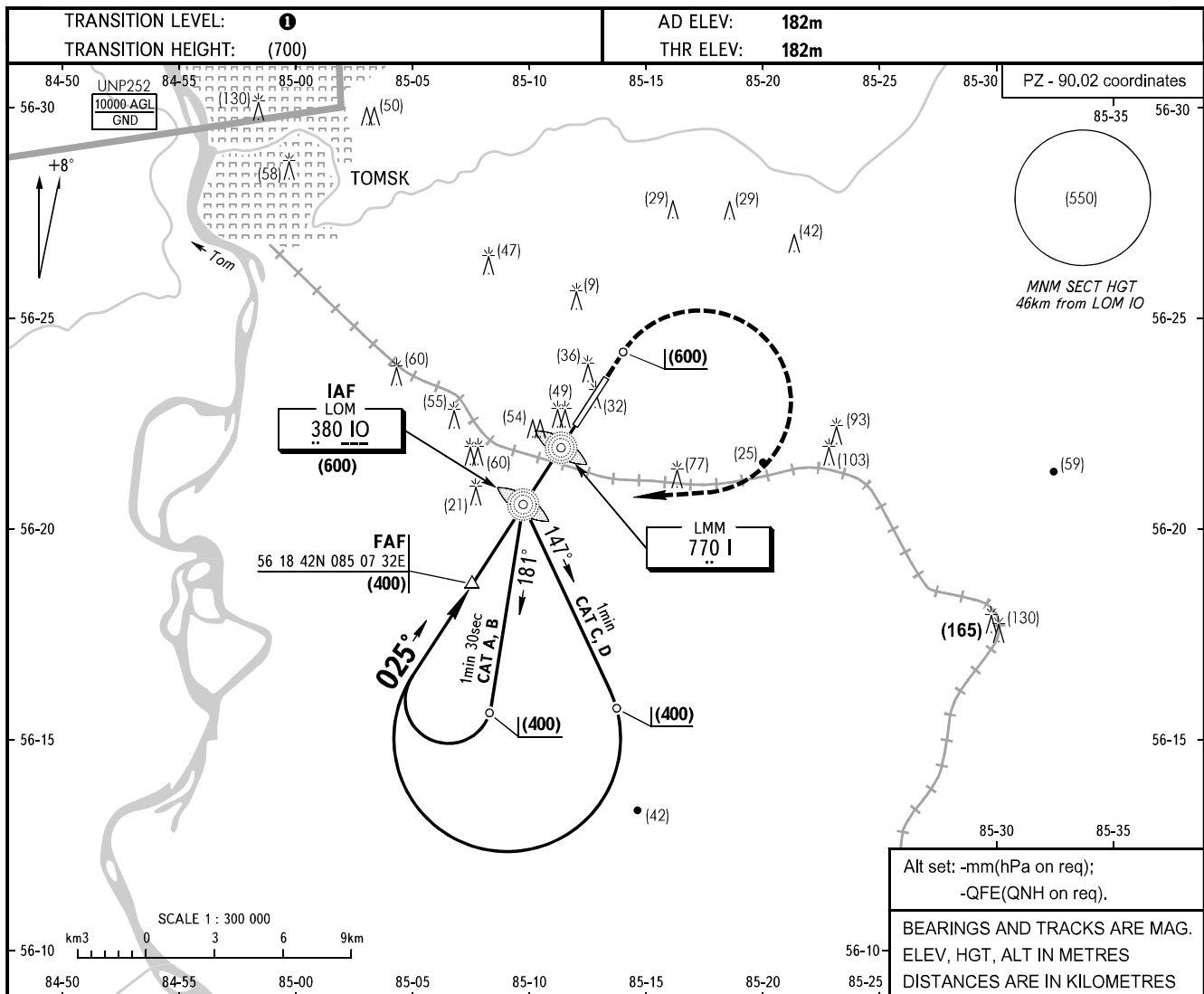


**INSTRUMENT  
APPROACH  
CHART - ICAO**

TOMSK TOWER 127.300

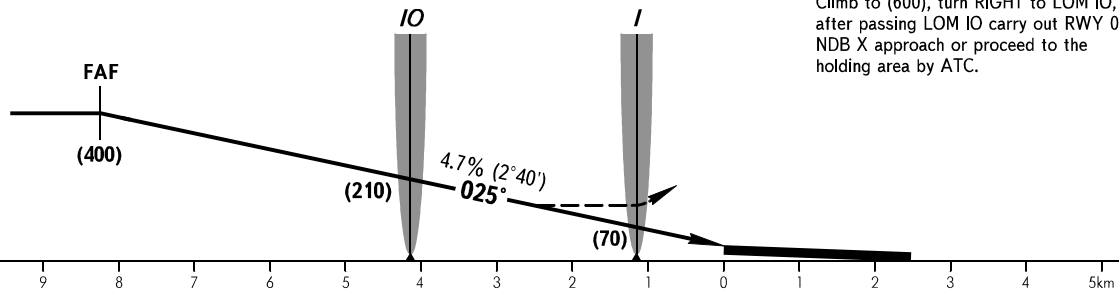
**TOMSK, RUSSIA**  
BOGASHEVO  
2 NDB Y, NDB Y RWY 03



FAF is fixed by TAR - AZM 207° DIST 9.5.

**MISSED APPROACH**

Climb to (600), turn RIGHT to LOM IO, after passing LOM IO carry out RWY 03 NDB X approach or proceed to the holding area by ATC.



OCA(H)		A	B	C	D
Straight-in	<b>2 NDB</b>	296(114)	296(114)	296(114)	296(114)
	<b>NDB (LOM)</b>	311(129)	311(129)	311(129)	311(129)
Approach	<b>NDB (LMM) With FAF</b>	311(129)	311(129)	311(129)	311(129)
	<b>WO FAF</b>	326(144)	326(144)	326(144)	326(144)

**1** TRANSITION LEVEL:

- FL040 when atmospheric pressure is 743mm mercury column or above;
- FL050 when atmospheric pressure is less than 743mm mercury column.

**WARNING**

GPWS may be brought into operation of short duration due to complex terrain on final between LOM and LMM.

GROUND SPEED	km/h	150	180	210	240	270	300	330	360	390	420	450
RATE OF DESCENT	m/s	2.0	2.4	2.7	3.1	3.5	3.9	4.3	4.7	5.1	5.5	5.9