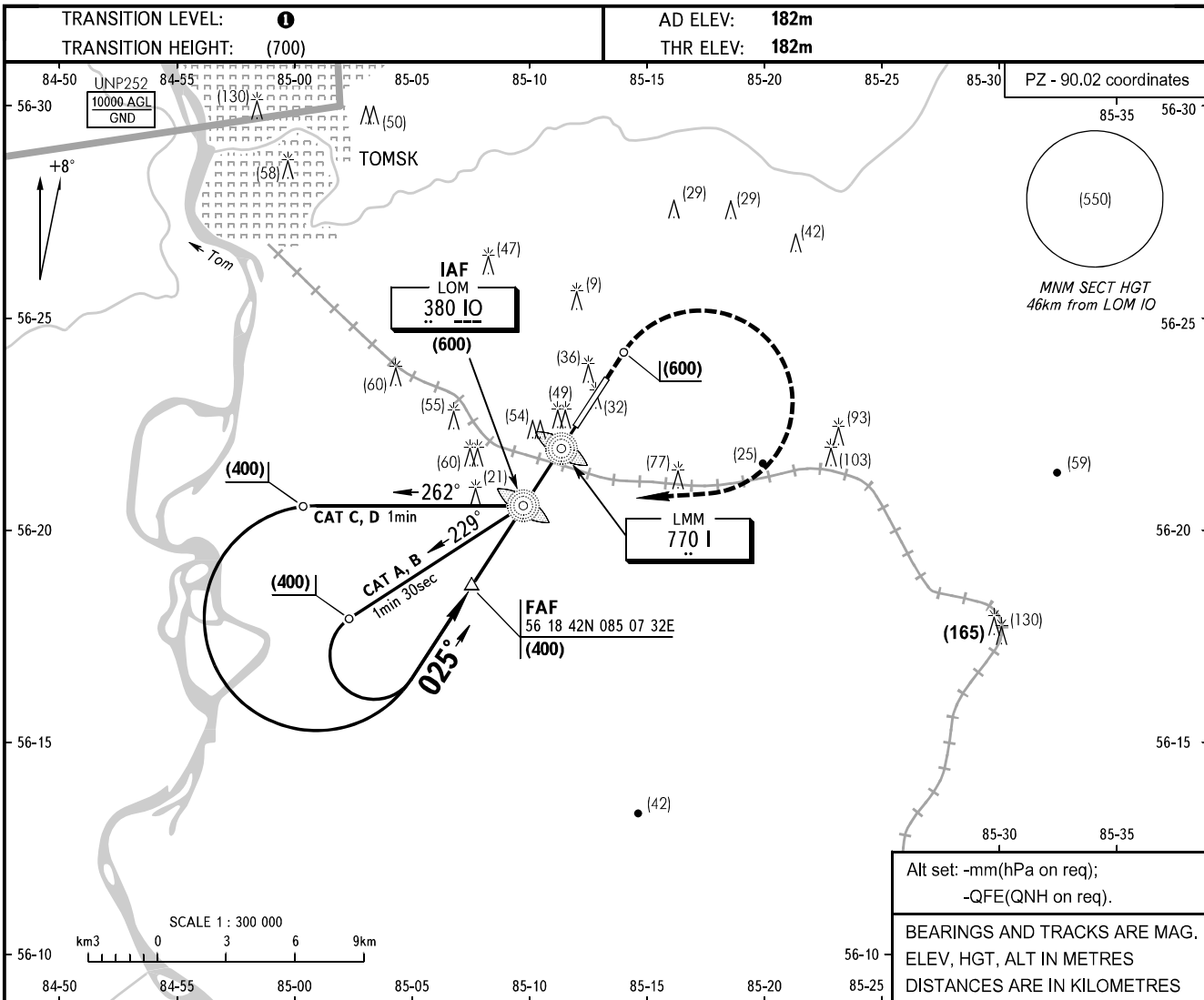


**INSTRUMENT
APPROACH
CHART - ICAO**

TOMSK TOWER 127.300

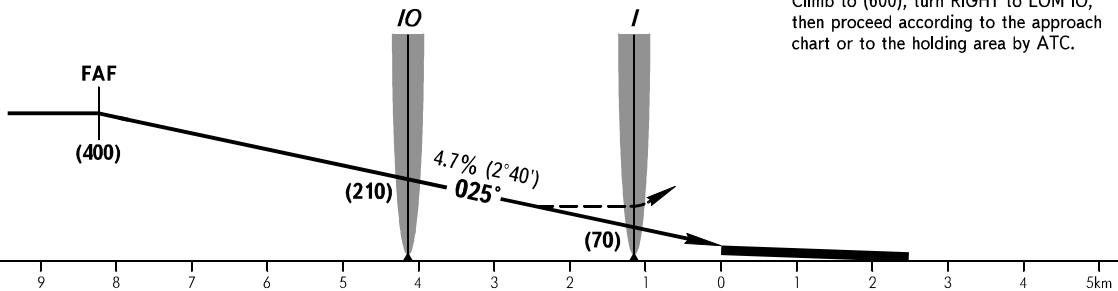
TOMSK, RUSSIA
BOGASHEVO
2 NDB X, NDB X RWY 03



FAF is fixed by TAR - AZM 207° DIST 9.5.

MISSED APPROACH

Climb to (600), turn RIGHT to LOM IO, then proceed according to the approach chart or to the holding area by ATC.



OCA(H)		A	B	C	D
Straight-in	2 NDB	296(114)	296(114)	296(114)	296(114)
	NDB (LOM)	311(129)	311(129)	311(129)	311(129)
Approach	NDB (LMM) With FAF	311(129)	311(129)	311(129)	311(129)
	WO FAF	326(144)	326(144)	326(144)	326(144)

1 TRANSITION LEVEL:
- FLO40 when atmospheric pressure is 743mm mercury column or above;
- FLO50 when atmospheric pressure is less than 743mm mercury column.

WARNING

GPWS may be brought into operation of short duration due to complex terrain on final between LOM and LMM.

GROUND SPEED	km/h	150	180	210	240	270	300	330	360	390	420	450
RATE OF DESCENT	m/s	2.0	2.4	2.7	3.1	3.5	3.9	4.3	4.7	5.1	5.5	5.9