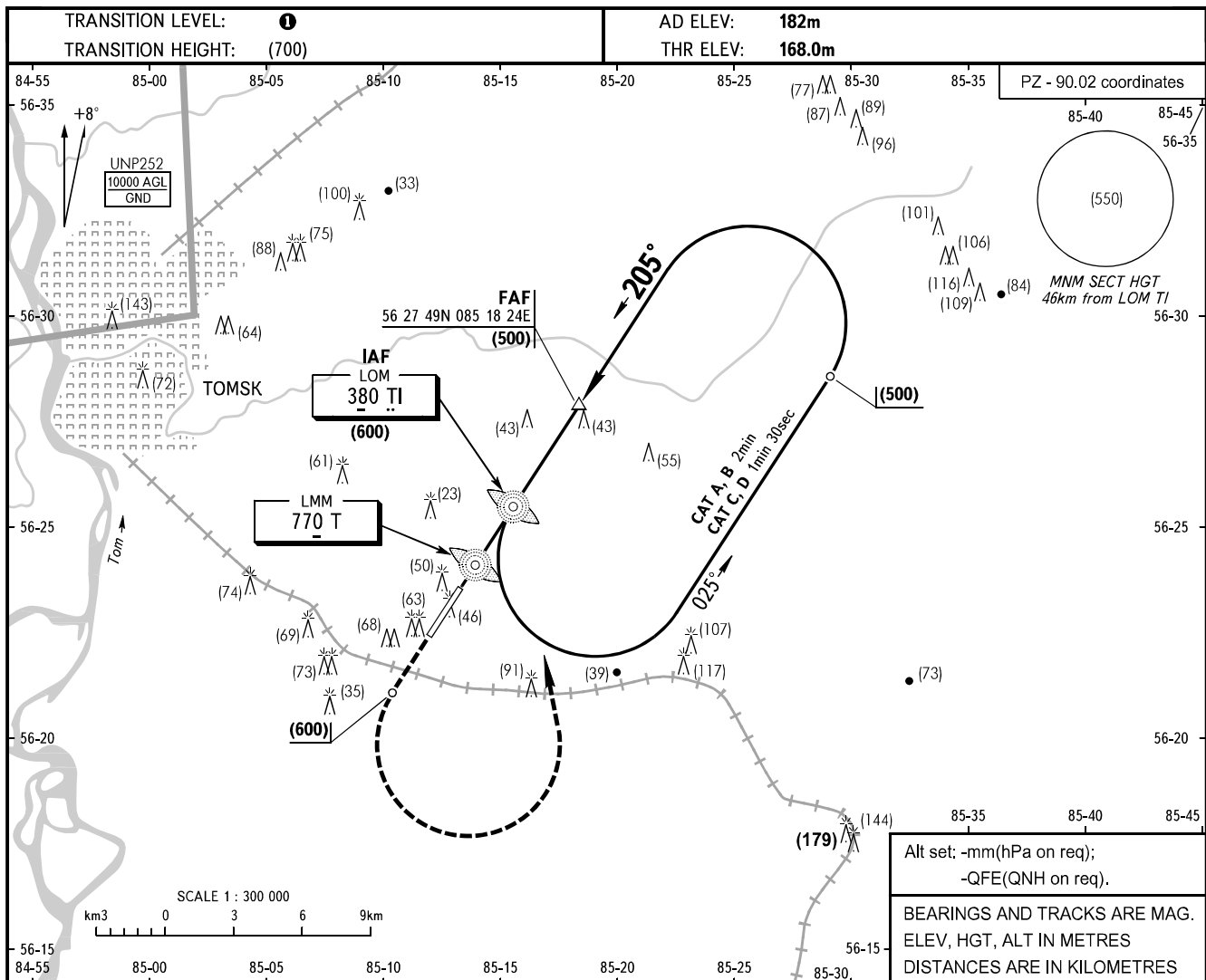


INSTRUMENT
APPROACH
CHART - ICAO

TOMSK TOWER 127.300

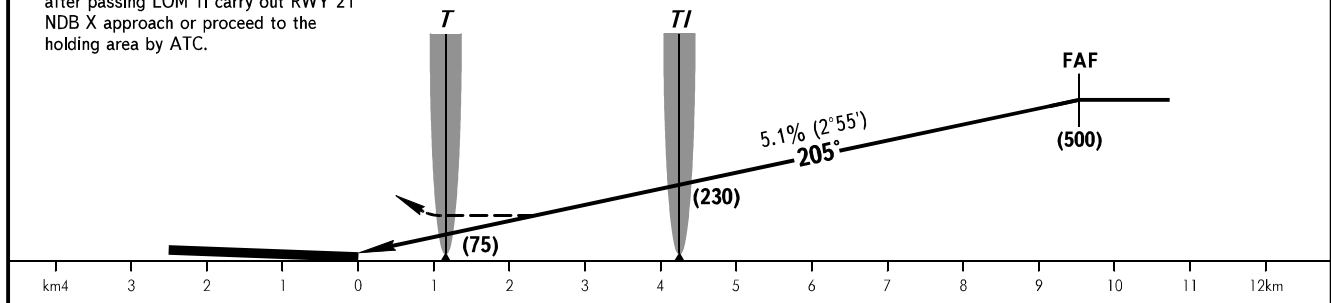
TOMSK, RUSSIA
BOGASHEVO
2 NDB Z, NDB Z RWY 21



MISSED APPROACH

Climb to (600), turn LEFT to LOM TI, after passing LOM TI carry out RWY 21 NDB X approach or proceed to the holding area by ATC.

FAF is fixed by TAR - AZM 023° DIST 10.8.



OCA(H)		A	B	C	D								
Straight-in	2 NDB	293(125)	293(125)	293(125)	293(125)								
	NDB (LOM)	293(125)	293(125)	293(125)	293(125)								
Approach	NDB (LMM) With FAF	293(125)	293(125)	293(125)	293(125)								
	WO FAF	301(133)	301(133)	345(177)	345(177)								
GROUND SPEED		km/h	150	180	210	240	270	300	330	360	390	420	450
RATE OF DESCENT		m/s	2.1	2.5	3.0	3.4	3.8	4.2	4.7	5.1	5.5	5.9	6.4

① TRANSITION LEVEL:
- FL040 when atmospheric pressure is 743mm mercury column or above;
- FL050 when atmospheric pressure is less than 743mm mercury column.