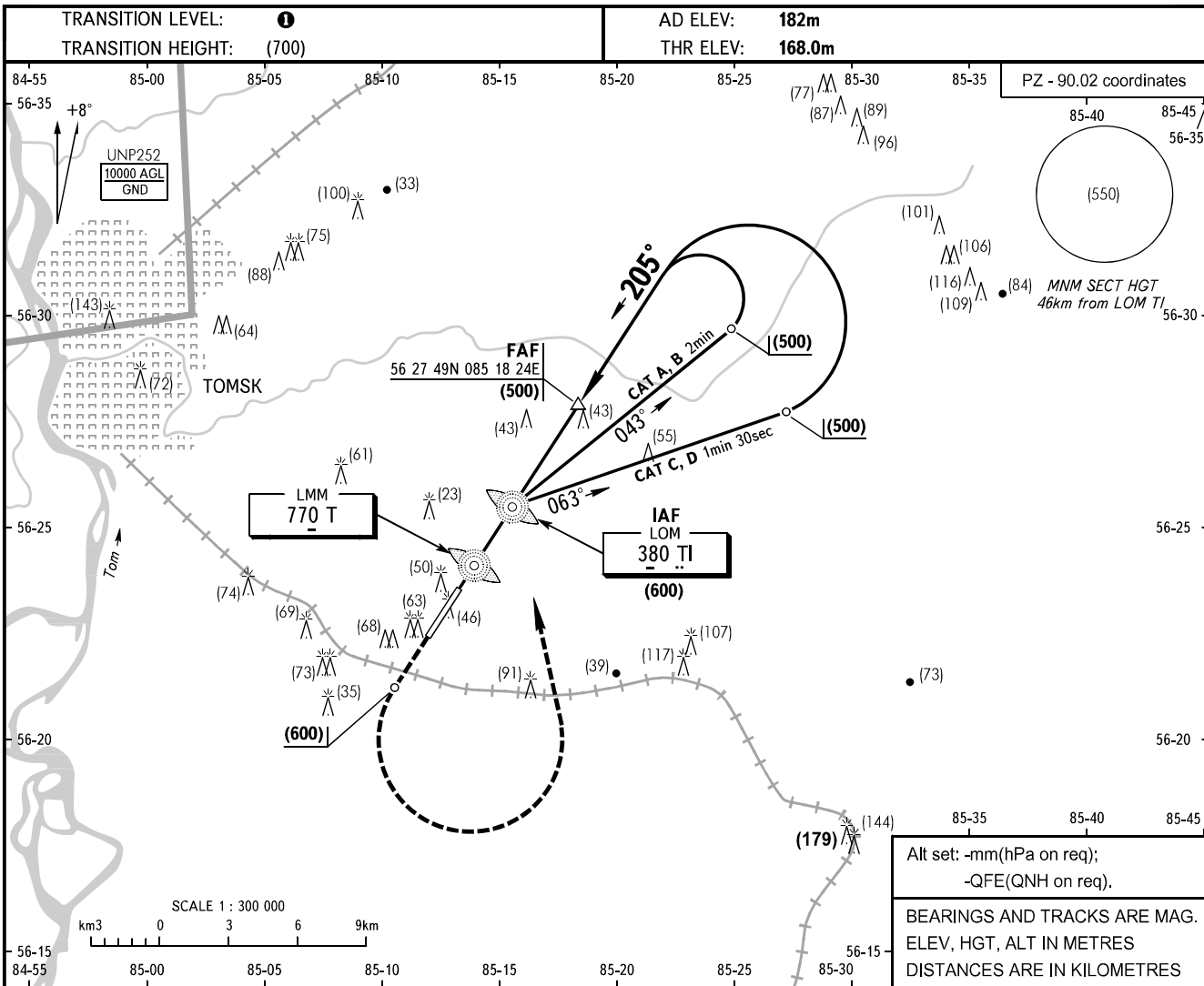


**INSTRUMENT  
APPROACH  
CHART - ICAO**

TOMSK TOWER 127.300

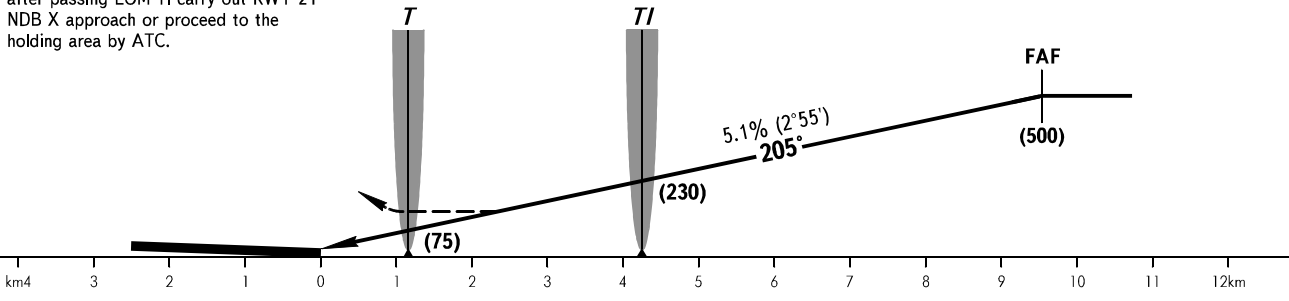
**TOMSK, RUSSIA**  
BOGASHEVO  
2 NDB Y, NDB Y RWY 21



**MISSED APPROACH**

Climb to (600), turn LEFT to LOM TI, after passing LOM TI carry out RWY 21 NDB X approach or proceed to the holding area by ATC.

FAF is fixed by TAR - AZM 023° DIST 10.8.



OCA(H)		A	B	C	D
Straight-in	<b>2 NDB</b>	293(125)	293(125)	293(125)	293(125)
	<b>NDB (LOM)</b>	293(125)	293(125)	293(125)	293(125)
Approach	<b>NDB (LMM) With FAF</b>	293(125)	293(125)	293(125)	293(125)
	<b>WO FAF</b>	301(133)	301(133)	345(177)	345(177)

**1** TRANSITION LEVEL:  
- FL040 when atmospheric pressure is 743mm mercury column or above;  
- FL050 when atmospheric pressure is less than 743mm mercury column.

GROUND SPEED	km/h	150	180	210	240	270	300	330	360	390	420	450
RATE OF DESCENT	m/s	2.1	2.5	3.0	3.4	3.8	4.2	4.7	5.1	5.5	5.9	6.4