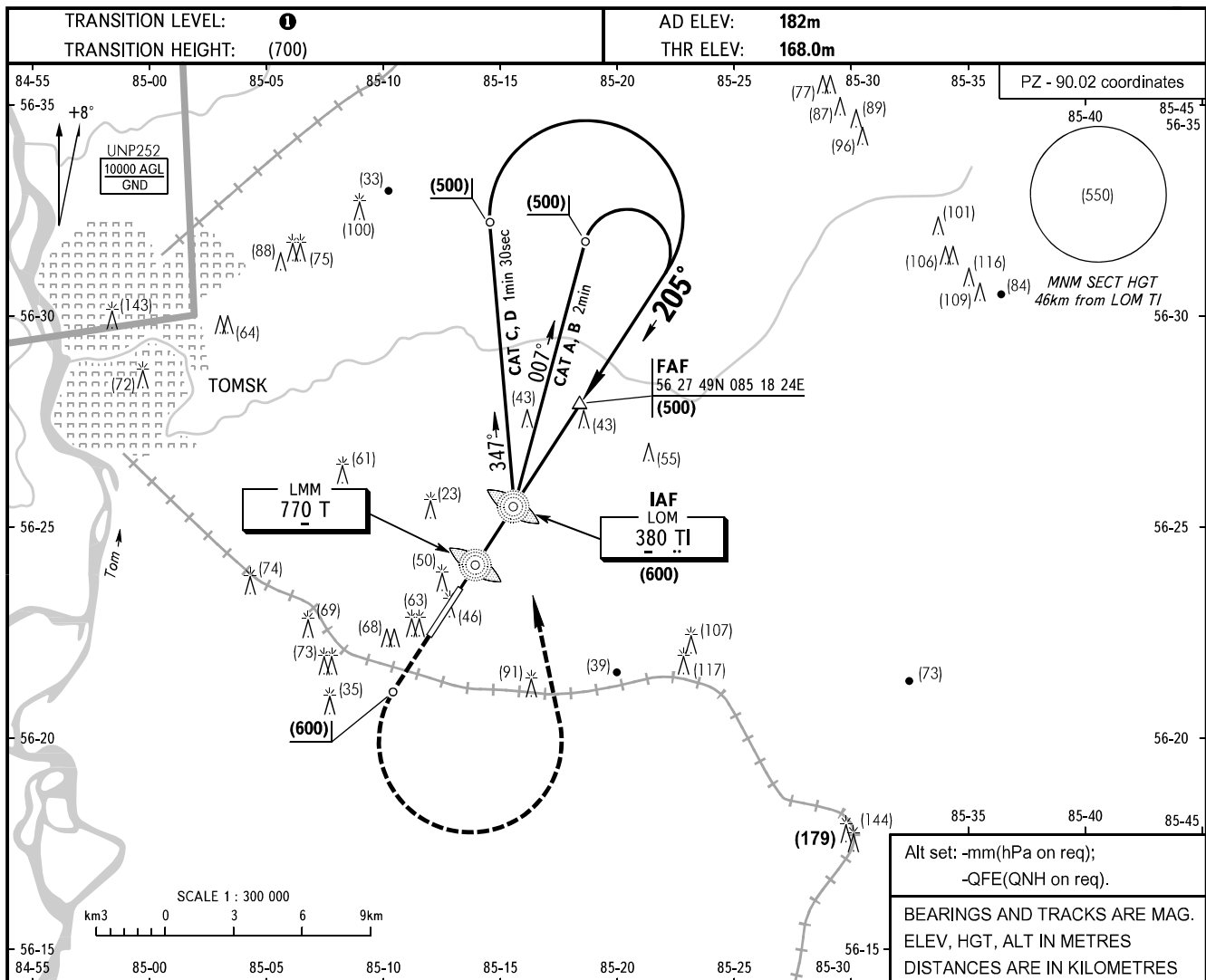


**INSTRUMENT  
APPROACH  
CHART - ICAO**

TOMSK TOWER 127.300

**TOMSK, RUSSIA  
BOGASHEVO  
2 NDB X, NDB X RWY 21**



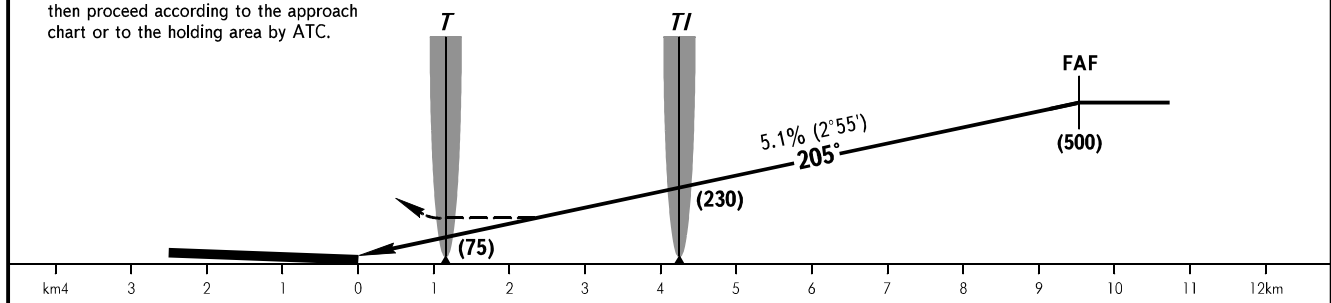
Alt set: -mm(hPa on req);  
-QFE(QNH on req).

BEARINGS AND TRACKS ARE MAG.  
ELEV, HGT, ALT IN METRES  
DISTANCES ARE IN KILOMETRES

**MISSED APPROACH**

Climb to (600), turn LEFT to LOM TI, then proceed according to the approach chart or to the holding area by ATC.

FAF is fixed by TAR - AZM 023° DIST 10.8.



OCA(H)		A	B	C	D
Straight-in	2 NDB	293(125)	293(125)	293(125)	293(125)
	NDB (LOM)	293(125)	293(125)	293(125)	293(125)
Approach	NDB (LMM) With FAF	293(125)	293(125)	293(125)	293(125)
	NDB (LMM) WO FAF	301(133)	301(133)	345(177)	345(177)

**① TRANSITION LEVEL:**  
- FL040 when atmospheric pressure is 743mm mercury column or above;  
- FL050 when atmospheric pressure is less than 743mm mercury column.

GROUND SPEED	km/h	150	180	210	240	270	300	330	360	390	420	450
RATE OF DESCENT	m/s	2.1	2.5	3.0	3.4	3.8	4.2	4.7	5.1	5.5	5.9	6.4