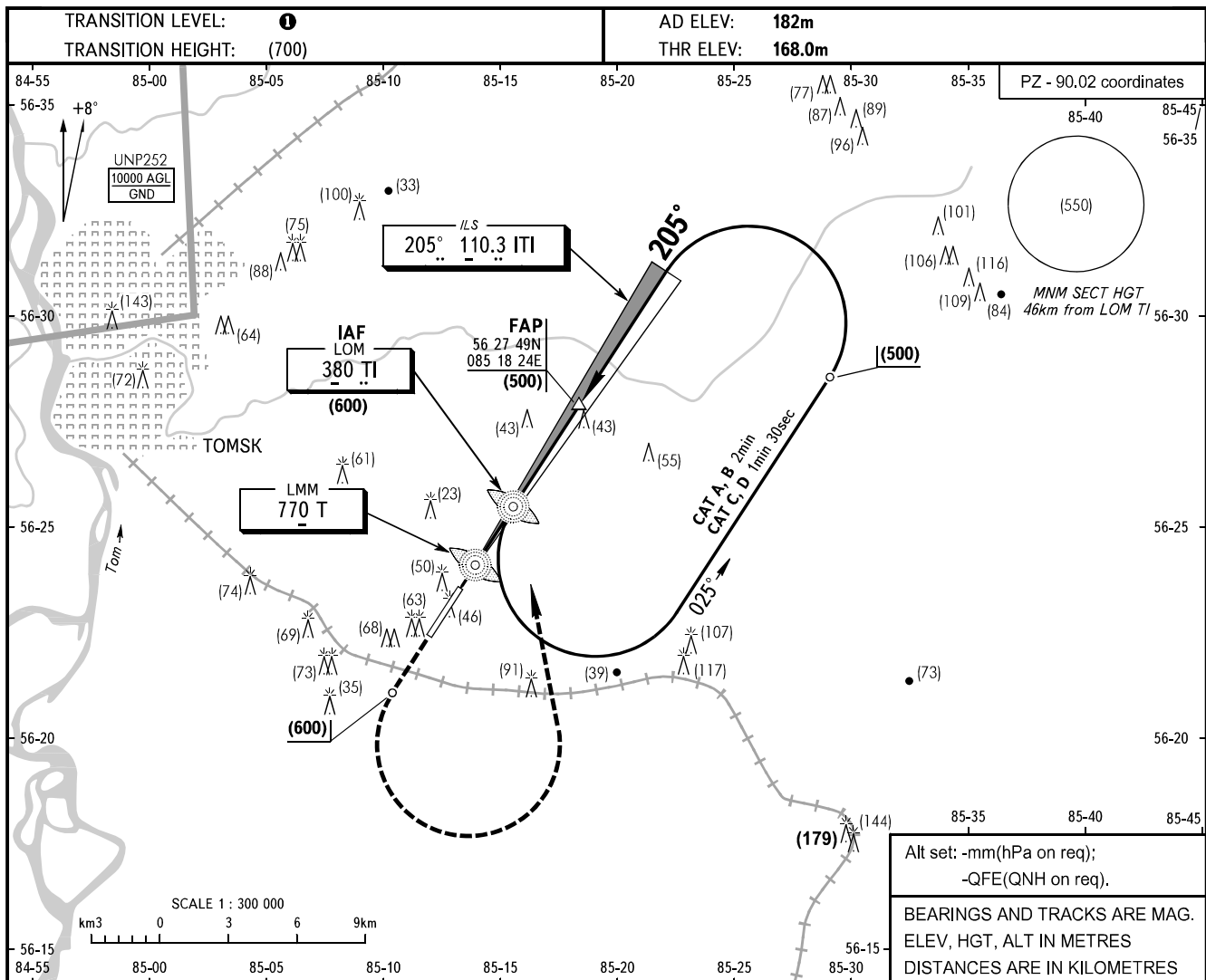


INSTRUMENT
APPROACH
CHART - ICAO

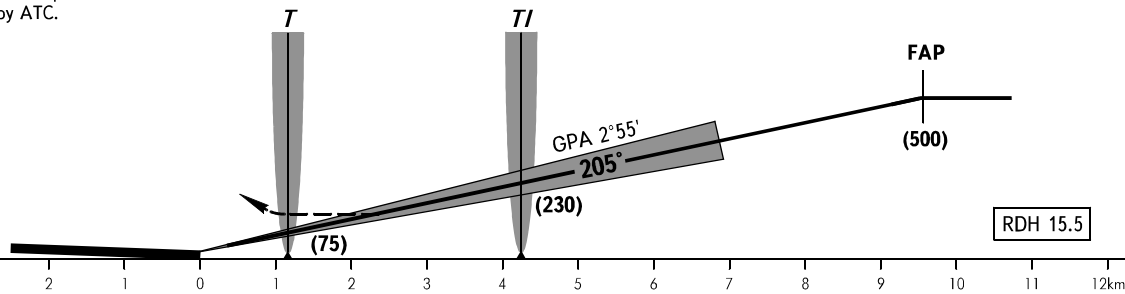
TOMSK TOWER 127.300

TOMSK, RUSSIA
BOGASHEVO
ILS Z RWY 21 CAT I



MISSED APPROACH

Climb to (600), turn LEFT to LOM TI,
after passing LOM TI carry out RWY 21
NDB X approach or proceed to the
holding area by ATC.



OCA(H)		A	B	C	D								
Straight-in	CAT I	217(49)	220(52)	224(56)	228(60)								
	Approach												
GROUND SPEED		km/h	150	180	210	240	270	300	330	360	390	420	450
RATE OF DESCENT		m/s	2.1	2.5	3.0	3.4	3.8	4.2	4.7	5.1	5.5	5.9	6.4

1 TRANSITION LEVEL:
- FL040 when atmospheric pressure is 743mm mercury column or above;
- FL050 when atmospheric pressure is less than 743mm mercury column.