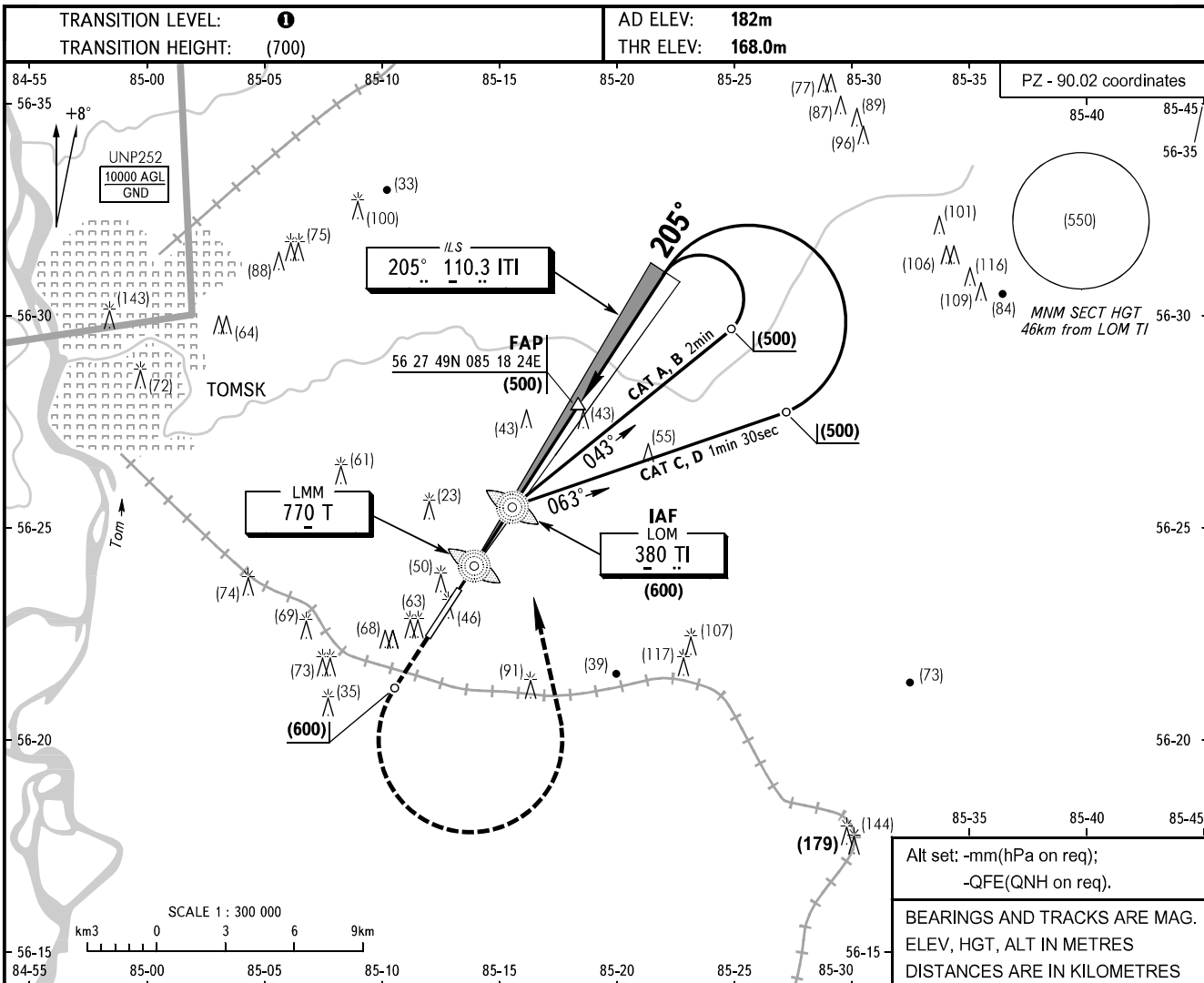


**INSTRUMENT  
APPROACH  
CHART - ICAO**

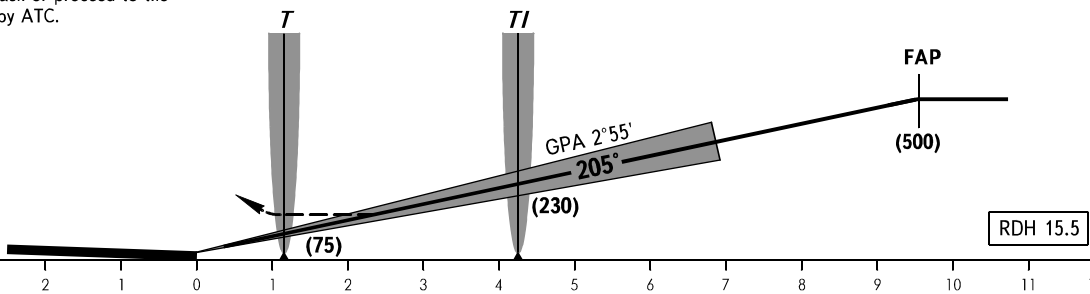
TOMSK TOWER 127.300

**TOMSK, RUSSIA**  
BOGASHEVO  
ILS Y RWY 21 CAT I



**MISSED APPROACH**

Climb to (600), turn LEFT to LOM TI, after passing LOM TI carry out RWY 21 NDB X approach or proceed to the holding area by ATC.



OCA(H)		A	B	C	D
Straight-in	<b>CAT I</b>	217(49)	220(52)	224(56)	228(60)
	Approach				

**①** TRANSITION LEVEL:  
- FL040 when atmospheric pressure is 743mm mercury column or above;  
- FL050 when atmospheric pressure is less than 743mm mercury column.

GROUND SPEED	km/h	150	180	210	240	270	300	330	360	390	420	450
RATE OF DESCENT	m/s	2.1	2.5	3.0	3.4	3.8	4.2	4.7	5.1	5.5	5.9	6.4