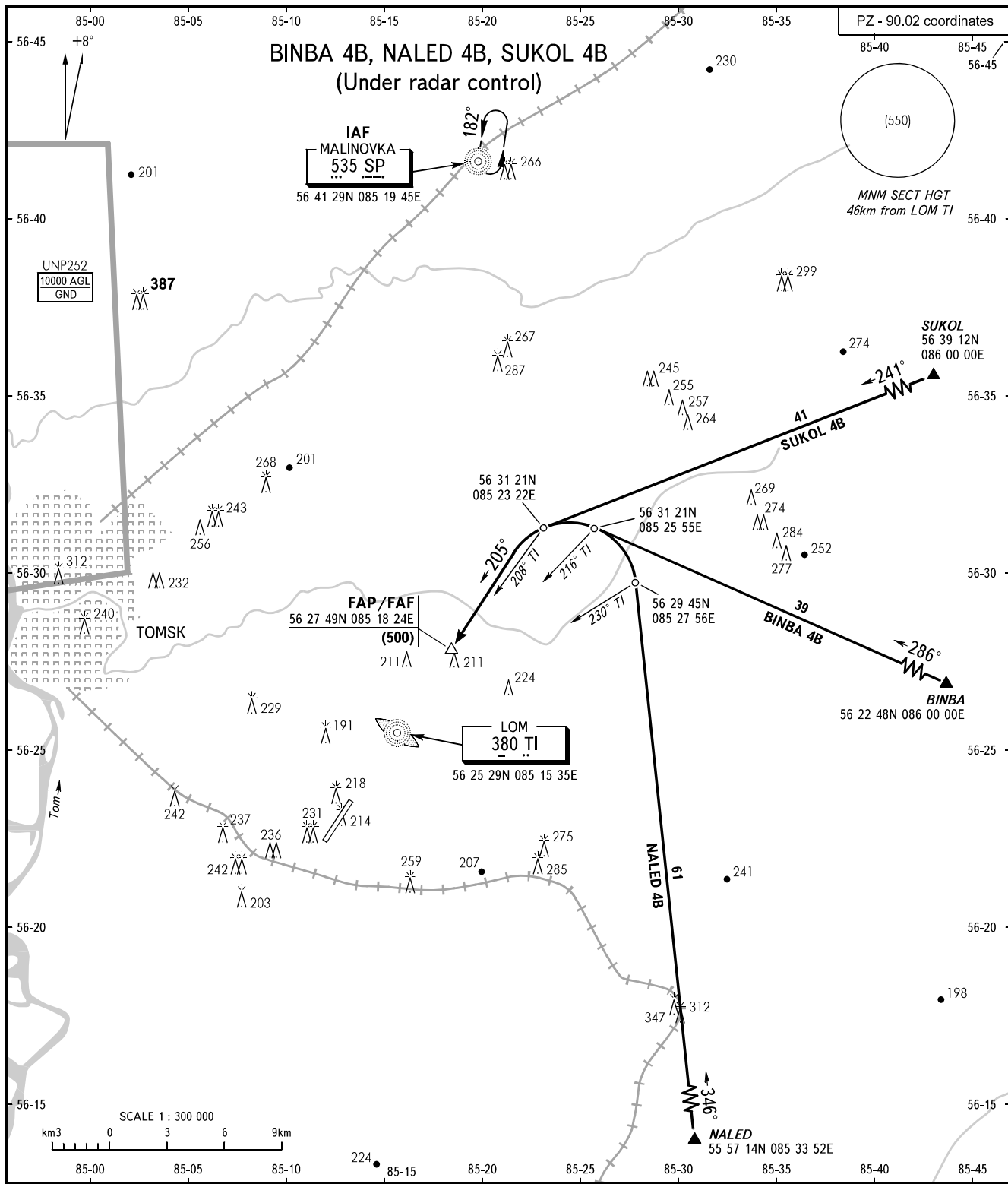


TOMSK, RUSSIA
BOGASHEVO
RWY 21

**STANDARD ARRIVAL CHART
INSTRUMENT (STAR) - ICAO**

TRANSITION
LEVEL : **1**

PZ - 90.02 coordinates



TOMSK TOWER **127.300**

- 1** TRANSITION LEVEL:
- FL040 when atmospheric pressure is 743mm mercury column or above;
 - FL050 when atmospheric pressure is less than 743mm mercury column.

WARNING
FL for passing the exit points on ATS routes shall be assigned by ATC.

BEARINGS AND TRACKS ARE MAGNETIC
ALTITUDES, HEIGHTS AND ELEVATIONS ARE IN METRES
DISTANCES ARE IN KILOMETRES