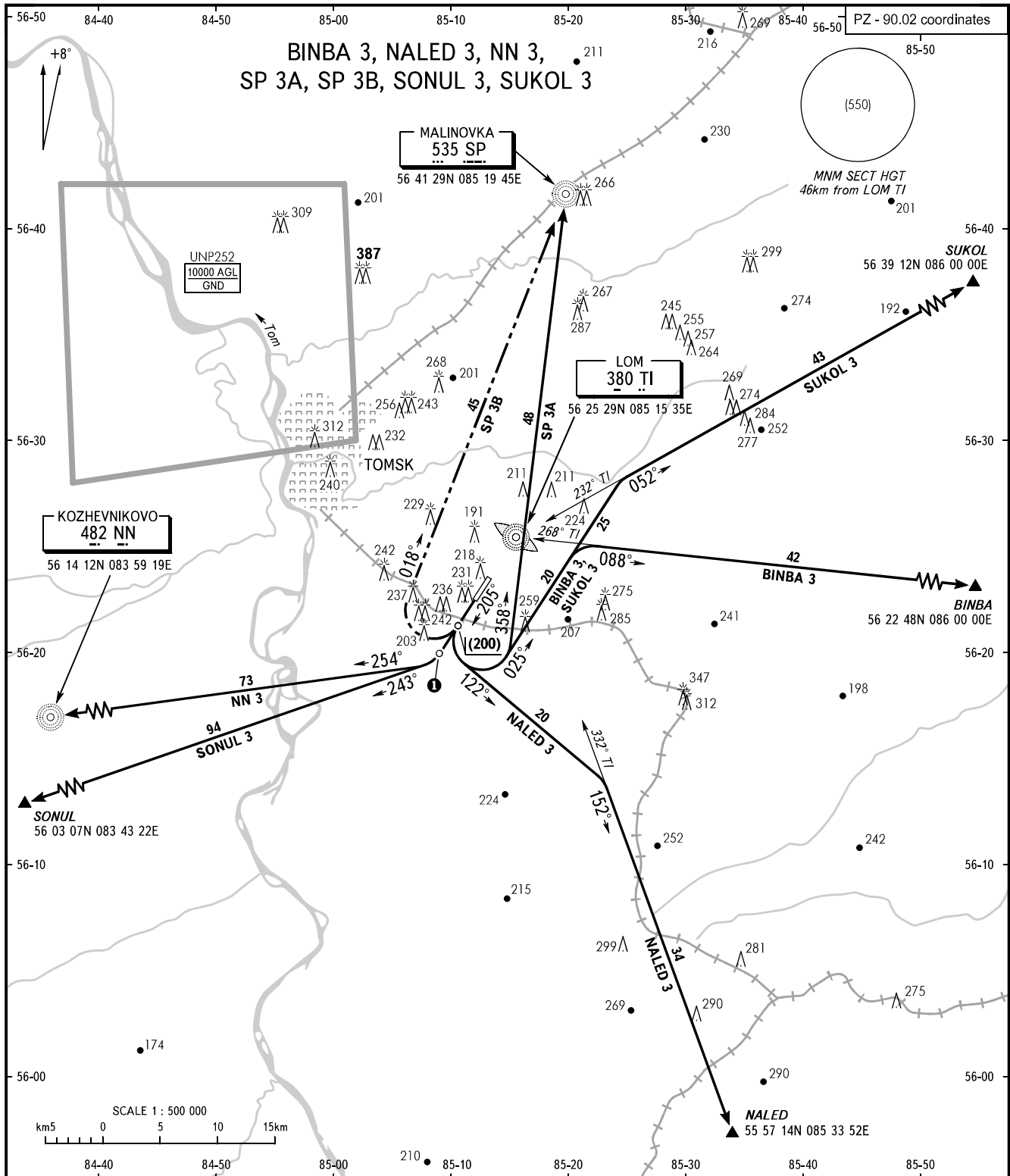


STANDARD DEPARTURE CHART
INSTRUMENT (SID) - ICAO

TRANSITION
HEIGHT: (700)

TOMSK, RUSSIA
BOGASHEVO
RWY 21



TOMSK TOWER 127.300

① NN 3 - the initial turn shall be carried out at DIST 5.5km (56 19 58N 085 09 02E) from RWY extremity.

WARNING
FL for passing the entry points on ATS routes shall be assigned by ATC.

BEARINGS AND TRACKS ARE MAGNETIC
ALTITUDES, HEIGHTS AND ELEVATIONS ARE IN METRES
DISTANCES ARE IN KILOMETRES