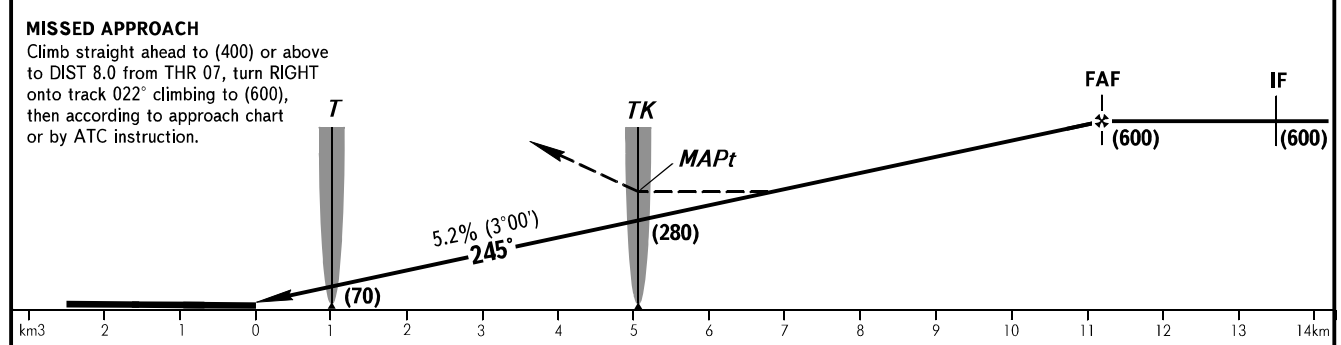
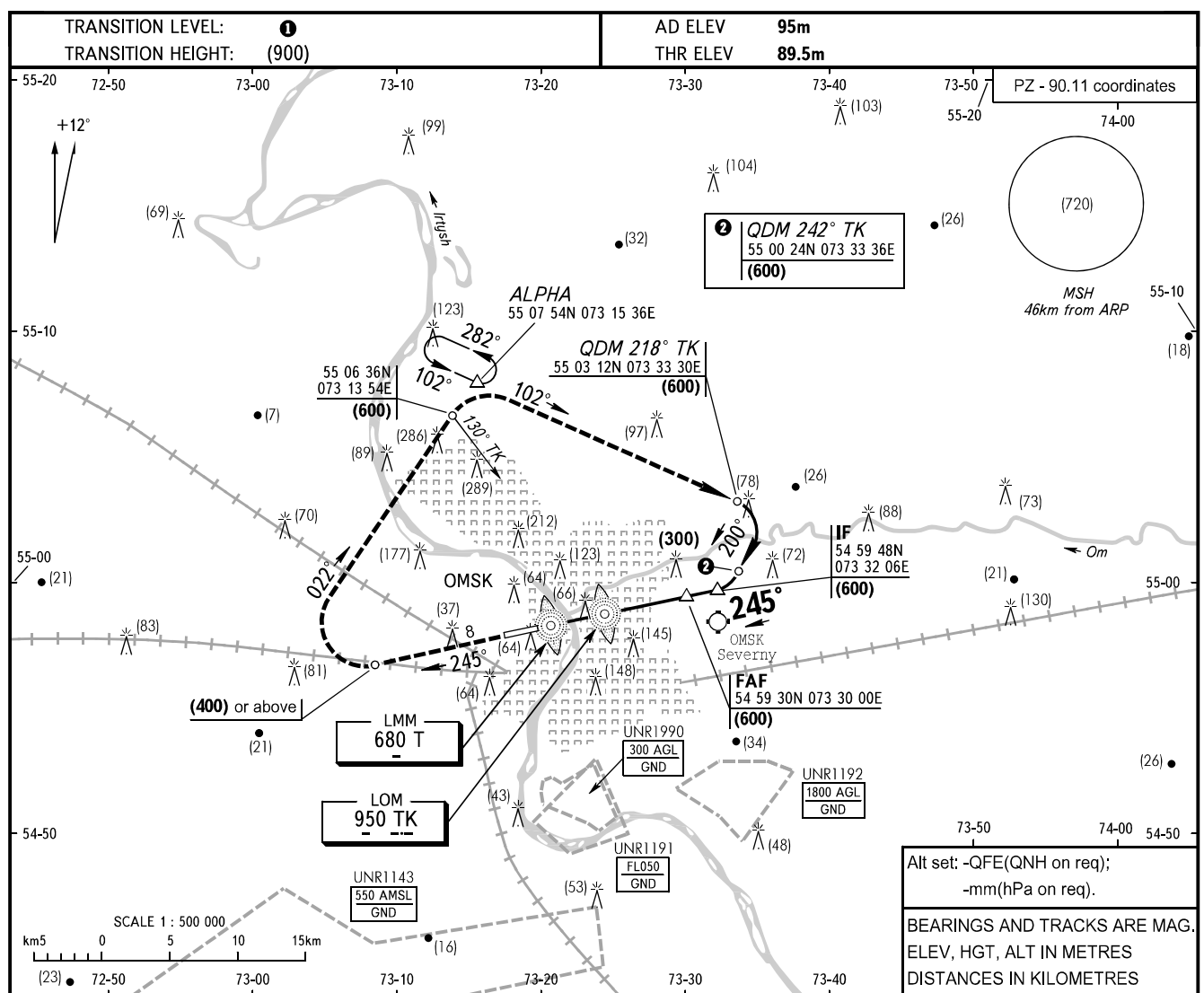


**INSTRUMENT
APPROACH
CHART - ICAO**

RADAR	119.000
START	119.000

OMSK, RUSSIA
TSENTRALNY
2 NDB, NDB RWY 25



OCA(H)		A	B	C	D								
Straight-in Approach	2 NDB	With FAF	465(375)	465(375)	465(375)	465(375)							
		WO FAF	540(450)	540(450)	540(450)	540(450)							
	NDB(LOM)	WO FAF	540(450)	540(450)	540(450)	540(450)							
		WO FAF	540(450)	540(450)	540(450)	540(450)							
GROUND SPEED		km/h	150	180	210	240	270	300	330	360	390	420	450
RATE OF DESCENT		m/s	2.2	2.6	3.1	3.5	3.9	4.4	4.8	5.2	5.7	6.1	6.6

1 TRANSITION LEVEL:
- FL050 when QFE is 733mm mercury column or above;
- FL060 when QFE is less than 733mm mercury column.

WARNING:

- The length of intermediate approach segment is less than normative.
- Turbulence with down-draughts may be experienced on final.
- Nesting and migration of birds are observed between LMM T and LOM TK in warm season.