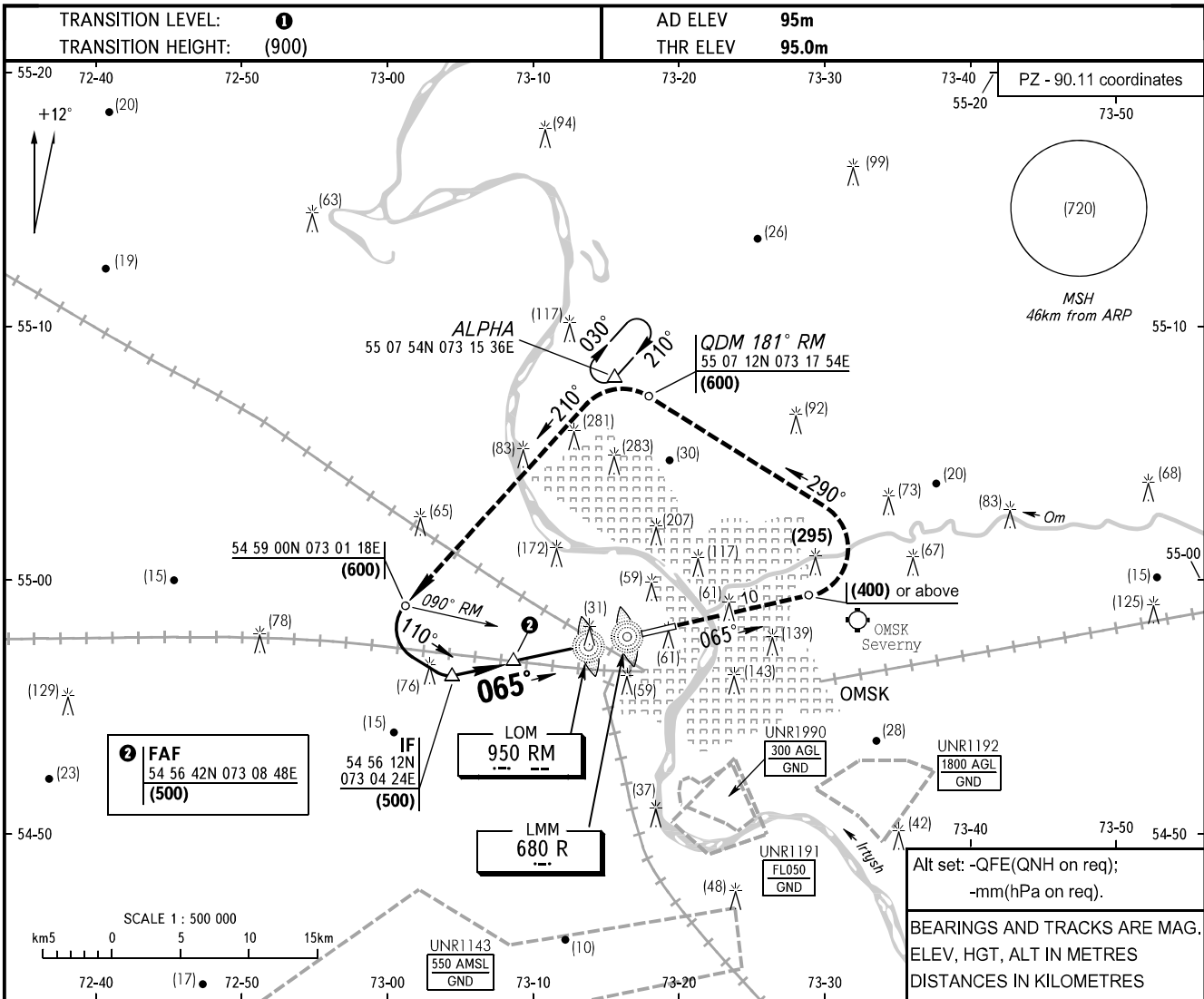


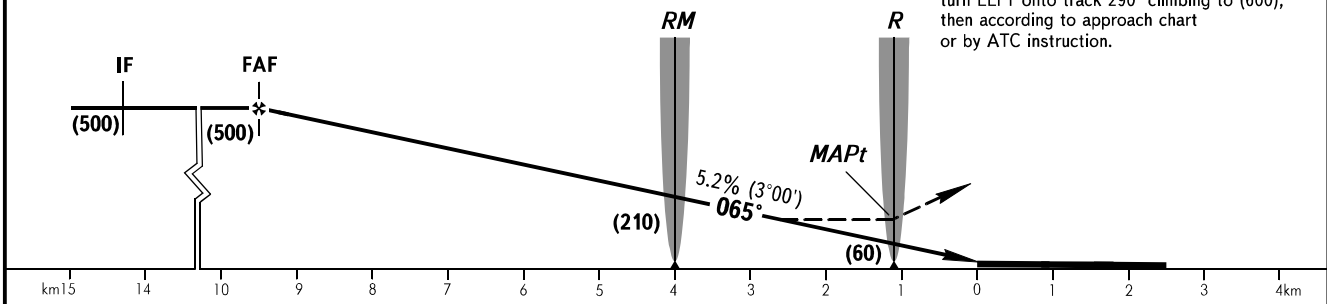
**INSTRUMENT
APPROACH
CHART - ICAO**

RADAR	119.000
START	119.000

OMSK, RUSSIA
TSENTRALNY
2 NDB, NDB RWY 07



MISSED APPROACH
Climb straight ahead to (400) or above with climb gradient 3.7% to DIST 10.0 from THR 25, turn LEFT onto track 290° climbing to (600), then according to approach chart or by ATC instruction.



OCA(H)		A	B	C	D
Straight-in	2 NDB				
	With FAF	215(120)	215(120)	215(120)	215(120)
Approach	WO FAF	325(230)	325(230)	325(230)	325(230)
	NDB(LOM) WO FAF	325(230)	325(230)	325(230)	325(230)
	NDB(LMM) WO FAF	325(230)	325(230)	325(230)	325(230)

1 TRANSITION LEVEL:
- FL050 when QFE is 733mm mercury column or above;
- FL060 when QFE is less than 733mm mercury column.

WARNING
The length of intermediate approach segment is less than normative.

GROUND SPEED	km/h	150	180	210	240	270	300	330	360	390	420	450
RATE OF DESCENT	m/s	2.2	2.6	3.1	3.5	3.9	4.4	4.8	5.2	5.7	6.1	6.6

CHANGE: New chart