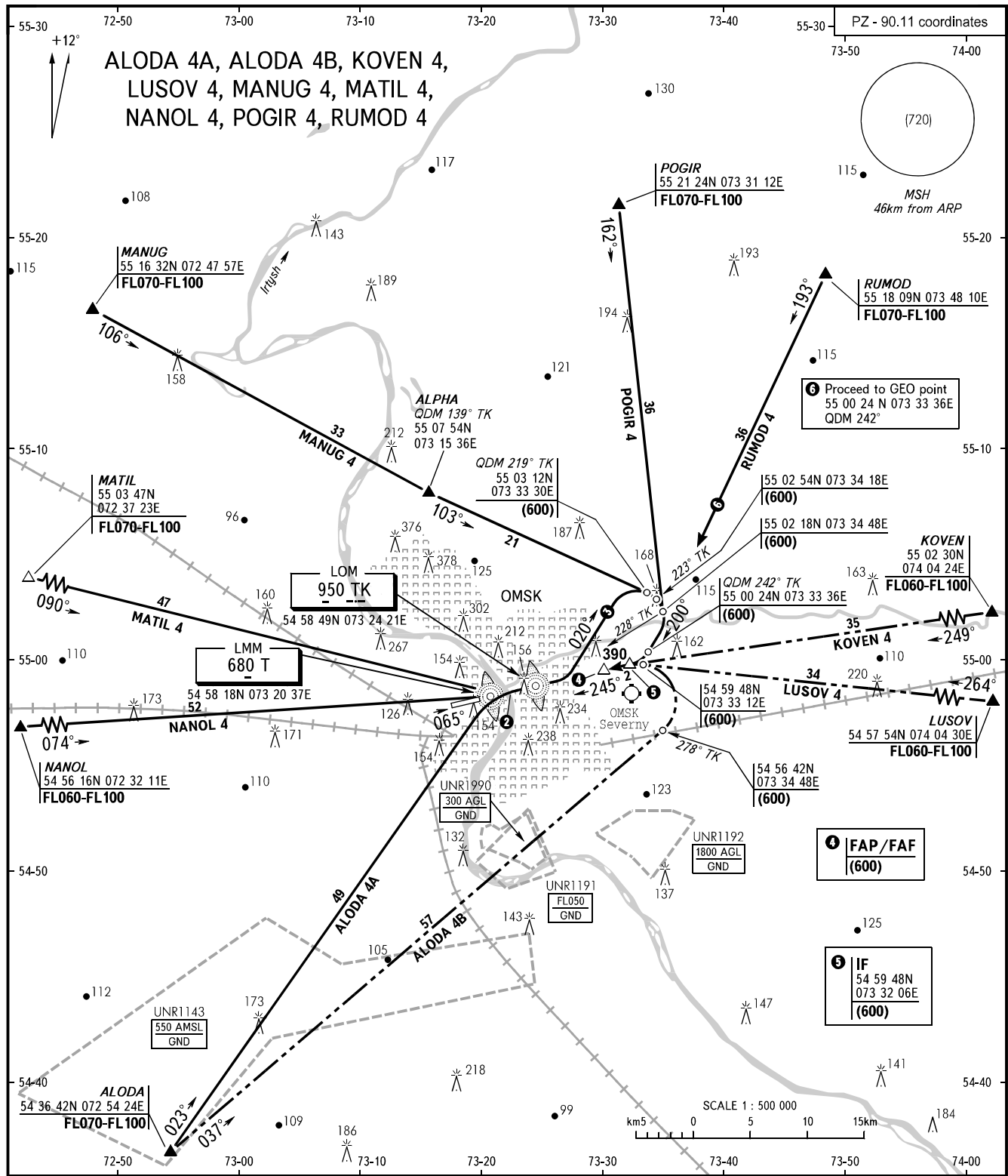


STANDARD ARRIVAL CHART  
INSTRUMENT (STAR) - ICAO

OMSK, RUSSIA  
TSENTRALNY  
RWY 25

TRANSITION  
LEVEL: ①



③ Proceed to GEO point  
55 00 24 N 073 33 36E  
QDM 242°

④ FAP/FAF  
(600)

⑤ IF  
54 59 48N  
073 32 06E  
(600)

APPROACH 131.200  
RADAR 119.000  
START 119.000

- ① TRANSITION LEVEL:  
- FL050 when QFE is 733mm mercury column or above;  
- FL060 when QFE is less than 733mm mercury column.
- ② From LMM T before the start of the turn:  
For CAT A, B ACFT - 1min 30sec.  
For CAT C, D ACFT - 1min.
- ③ For all CAT ACFT on track 020° - 1min 15sec.

**WARNING**  
Arrival from CRP KOVEN and LUSOV is allowed only when there are no flights at OMSK (Severnoy) AD.

BEARINGS AND TRACKS ARE MAGNETIC  
ALTITUDES, HEIGHTS AND ELEVATIONS IN METRES  
DISTANCES IN KILOMETRES