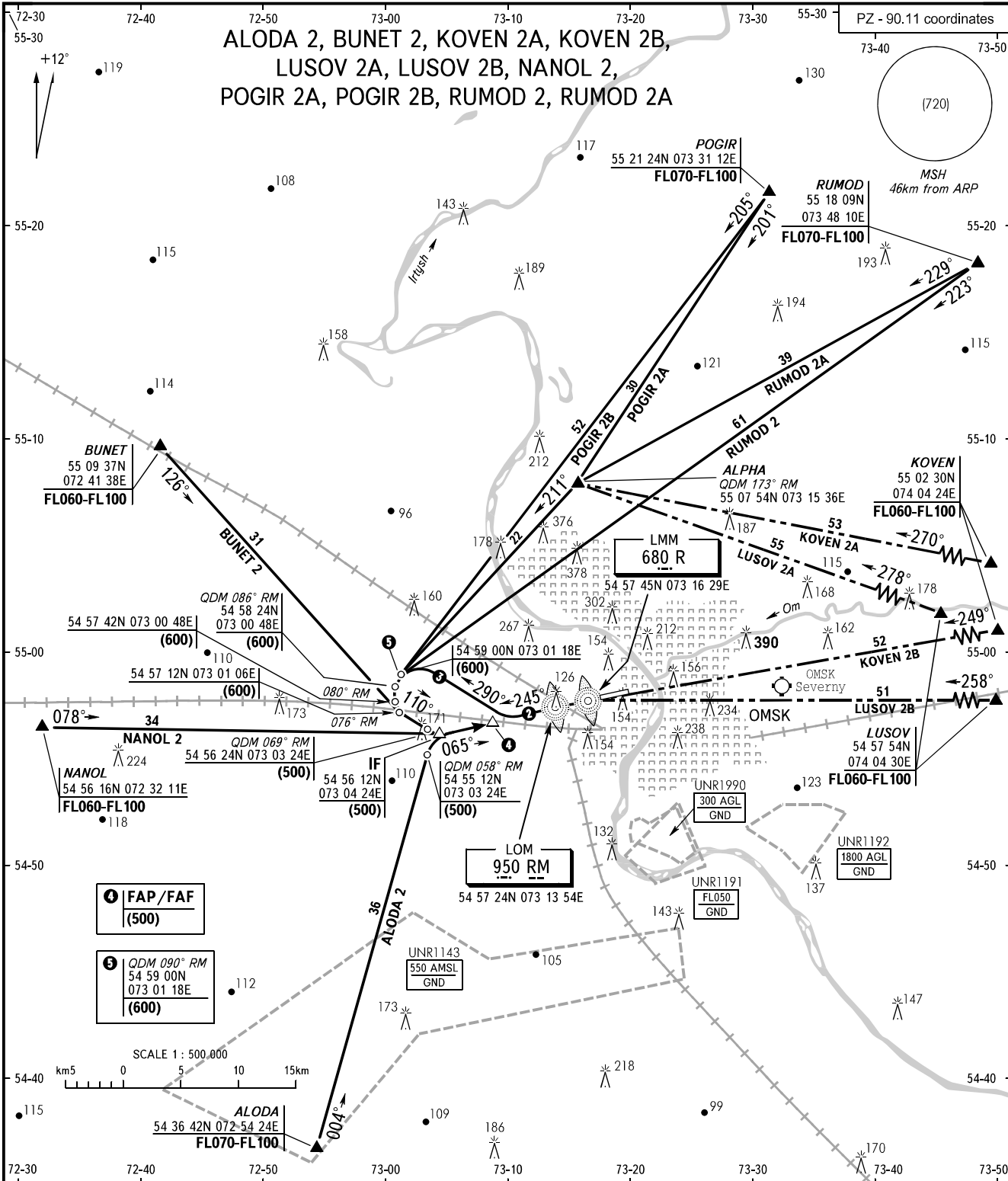


STANDARD ARRIVAL CHART
INSTRUMENT (STAR) - ICAO

OMSK, RUSSIA
TSENTRALNY
RWY 07

TRANSITION
LEVEL : ①

ALODA 2, BUNET 2, KOVEN 2A, KOVEN 2B,
LUSOV 2A, LUSOV 2B, NANOL 2,
POGIR 2A, POGIR 2B, RUMOD 2, RUMOD 2A



④ FAP/FAF
(500)

⑤ QDM 090° RM
54 59 00N
073 01 18E
(600)

APPROACH 131.200
RADAR 119.000
START 119.000

- ① TRANSITION LEVEL:
- FL050 when QFE is 733mm mercury column or above;
- FL060 when QFE is less than 733mm mercury column.
- ② From LMM R before the start of the turn:
For CAT A, B ACFT - 1min 30sec.
For CAT C, D ACFT - 1min.
- ③ For all CAT ACFT on track 290° - 1min 15sec.

WARNING
Arrival from CRP KOVEN and LUSOV is allowed only when there are no flights at OMSK (Severnoy) AD.

BEARINGS AND TRACKS ARE MAGNETIC
ALTITUDES, HEIGHTS AND ELEVATIONS IN METRES
DISTANCES IN KILOMETRES

CHANGE: New chart