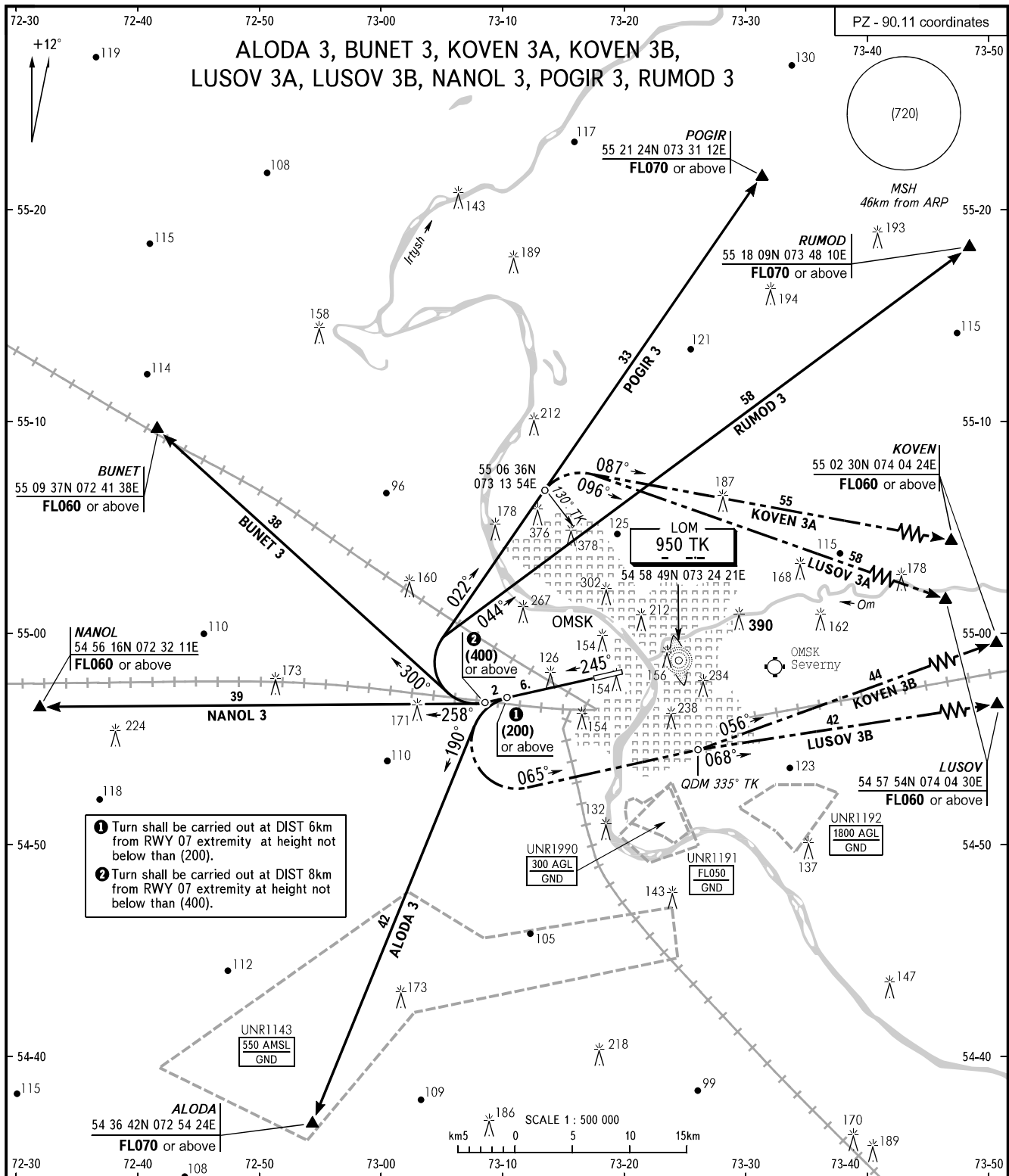


STANDARD DEPARTURE CHART  
INSTRUMENT (SID) - ICAO

TRANSITION  
HEIGHT : (900)

OMSK, RUSSIA  
TSENTRALNY  
RWY 25



START 119.000  
RADAR 119.000  
APPROACH 131.200

**WARNING**  
Take-off shall be carried out using noise abatement procedure.

BEARINGS AND TRACKS ARE MAGNETIC  
ALTITUDES, HEIGHTS AND ELEVATIONS IN METRES  
DISTANCES IN KILOMETRES