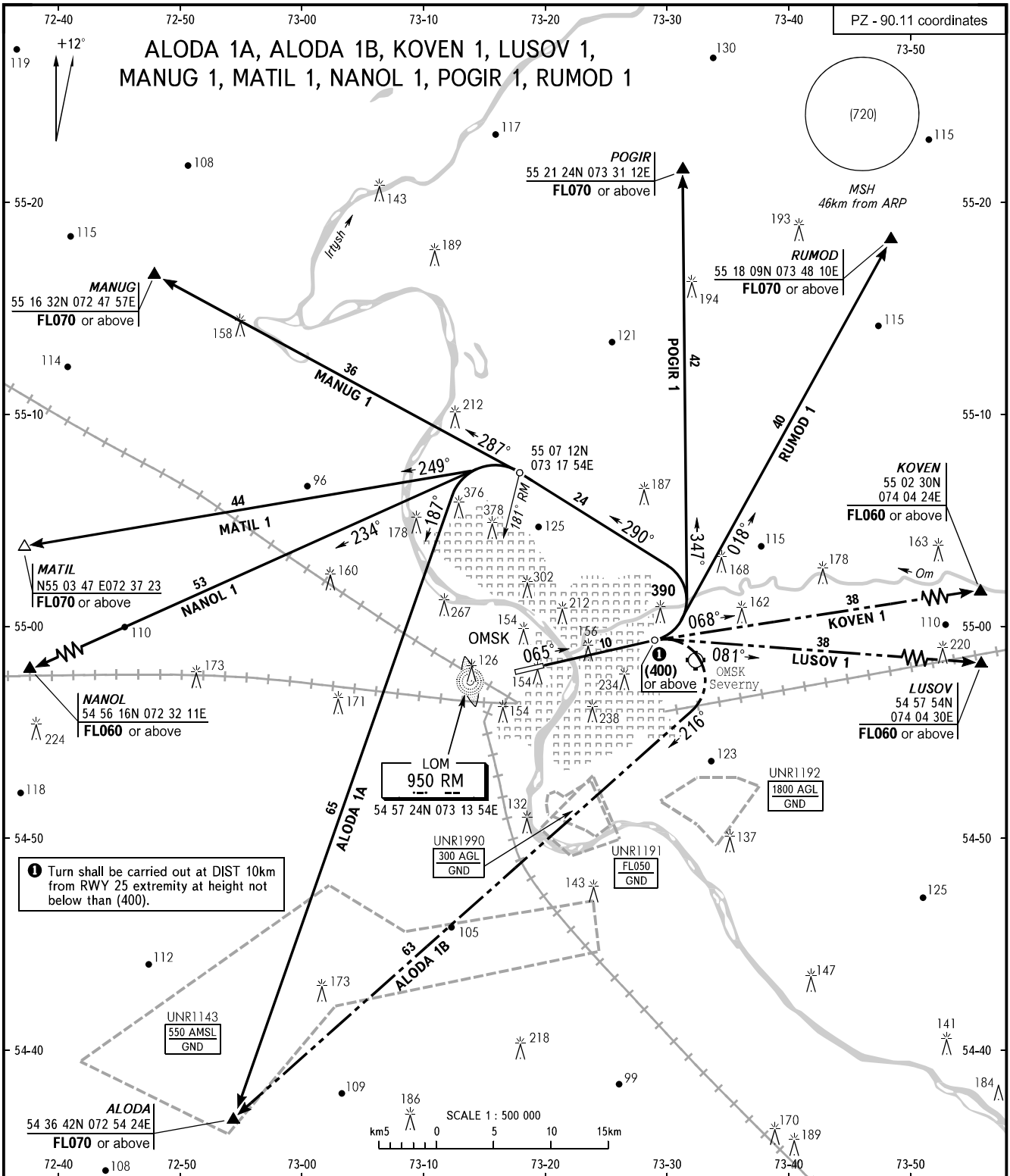


STANDARD DEPARTURE CHART  
INSTRUMENT (SID) - ICAO

TRANSITION  
HEIGHT : (900)

OMSK, RUSSIA  
TSENTRALNY  
RWY 07



START 119.000  
RADAR 119.000  
APPROACH 131.200

**WARNING:**

1. Take-off shall be carried out using noise abatement procedure.
2. Take-off and climbing to (400) shall be carried out with climb gradient 3.7%.  
If climb gradient 3.7% cannot be complied with, take-off minima for CAT A, B ACFT shall be ceiling 330 VIS 2300, for CAT C, D ACFT shall be ceiling 350 VIS 2400 with visual avoidance of obstacle 390 at 500m to the right.

BEARINGS AND TRACKS ARE MAGNETIC  
ALTITUDES, HEIGHTS AND ELEVATIONS IN METRES  
DISTANCES IN KILOMETRES