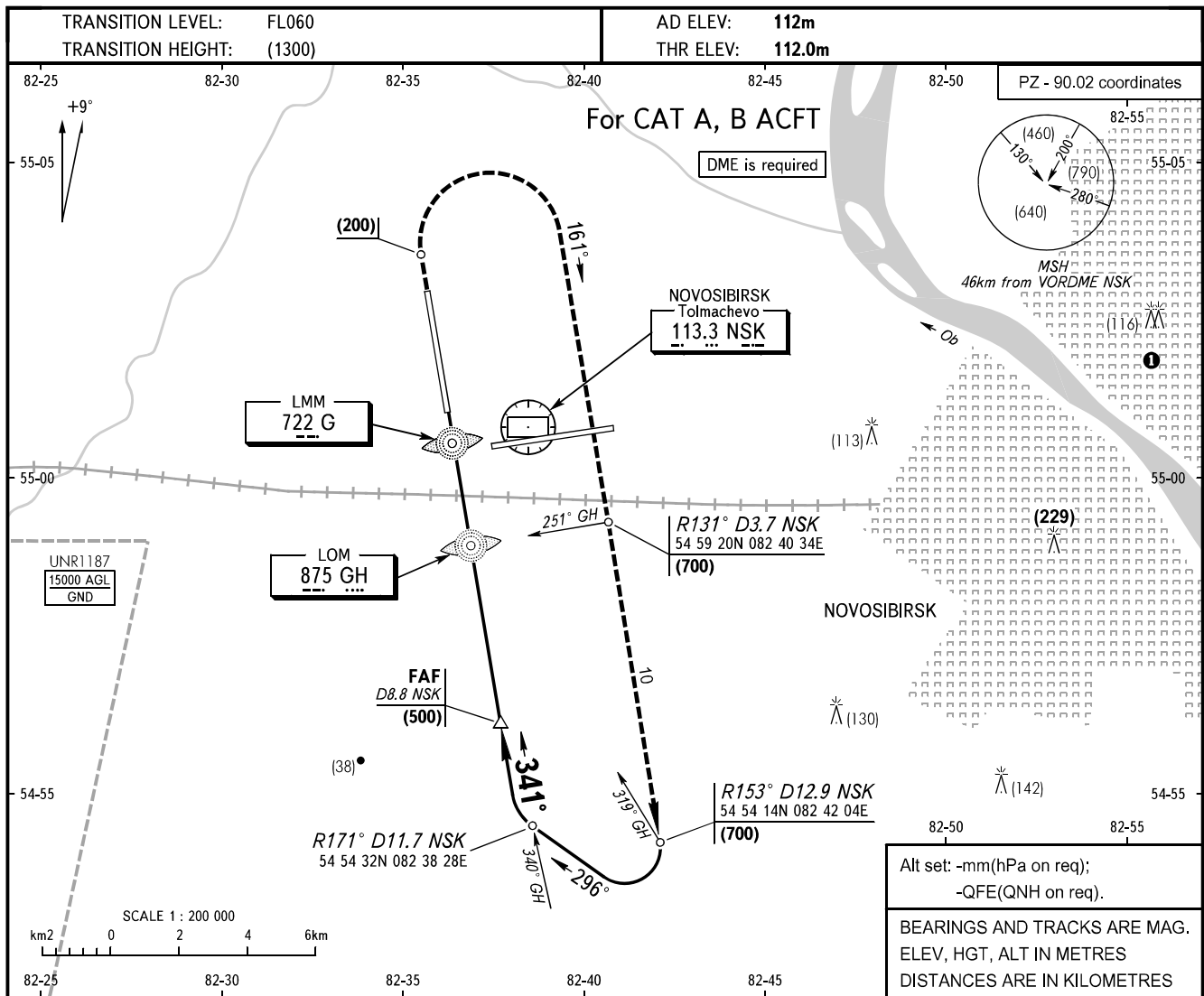


**INSTRUMENT
APPROACH
CHART - ICAO**

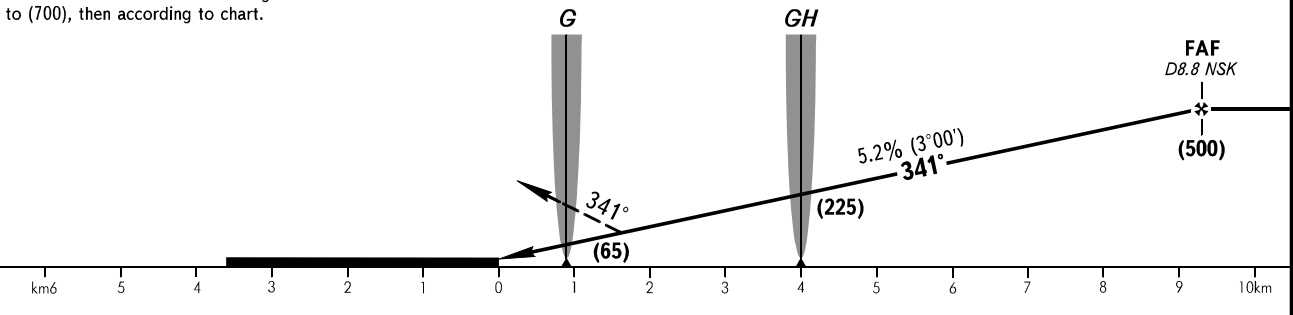
**NOVOSIBIRSK, RUSSIA
TOLMACHEVO
2 NDB RWY 34**

TOWER	126.700
RADAR	122.000



MISSED APPROACH

Climb on track 341° to (200), then turn RIGHT on track 161° climbing to (700), then according to chart.



OCA(H)		A	B	C	D								
Straight-in	With FAF	212(100)	212(100)										
	WO FAF	307(195)	307(195)										
Approach													
GROUND SPEED		km/h	150	180	210	240	270	300	330	360	390	420	450
RATE OF DESCENT		m/sec	2.1	2.6	3.0	3.4	3.8	4.3	4.7	5.1	5.5	6.0	6.4

Flights of civil ACFT over the central part of the city below (1200) are PROHIBITED.