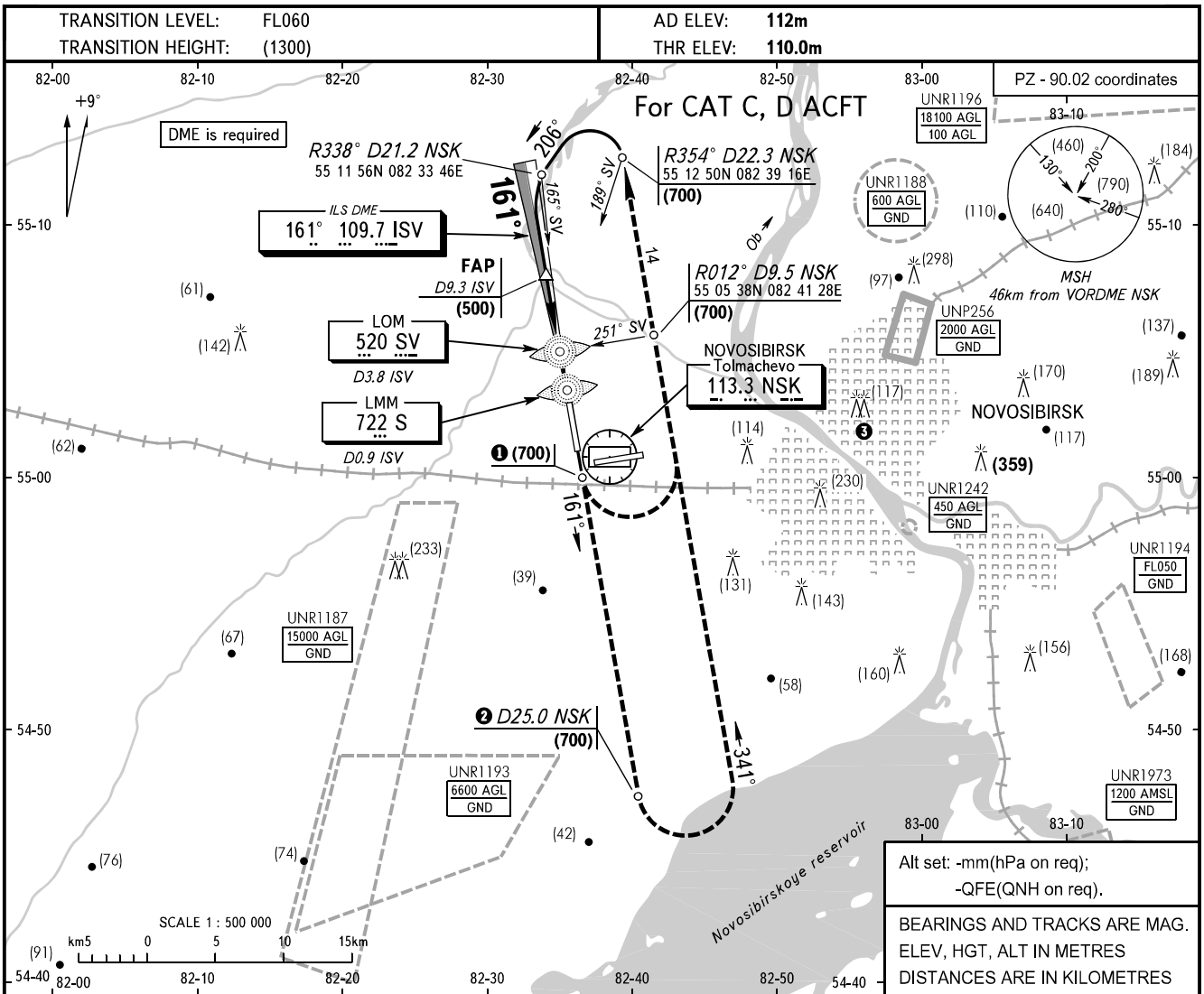


**INSTRUMENT
APPROACH
CHART - ICAO**

**NOVOSIBIRSK, RUSSIA
TOLMACHEVO
ILS RWY 16 CAT I/II**

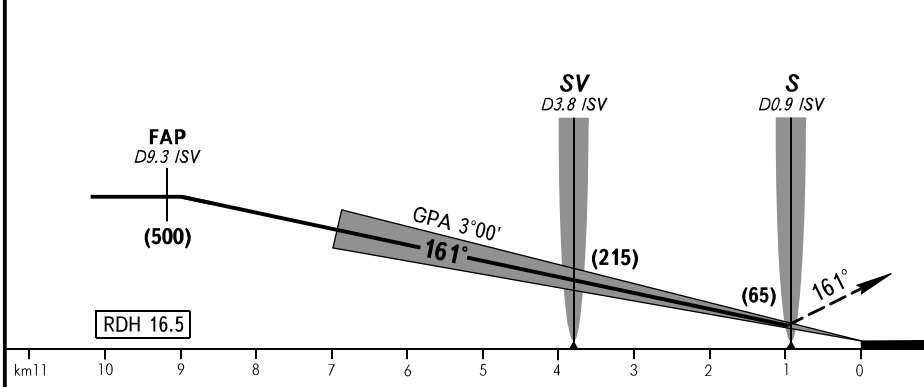
RADAR	122.000
TOWER	126.700



Alt set: -mm(hPa on req);
-QFE(QNH on req).

BEARINGS AND TRACKS ARE MAG.
ELEV, HGT, ALT IN METRES
DISTANCES ARE IN KILOMETRES

MISSED APPROACH:
When radio communication is AVBL:
① Climb straight ahead to (700), then as instructed by ATS unit controller.
In case of radio communication failure:
② Climb straight ahead to (700) to D25.0 NSK, turn LEFT onto track 341°, then according to chart as published.



OCA(H)		A	B	C	D								
Straight-in Approach	CAT II			132(22)	136(26)								
	CAT I			158(48)	162(52)								
GROUND SPEED		km/h	150	180	210	240	270	300	330	360	390	420	450
RATE OF DESCENT		m/s	2.1	2.6	3.0	3.4	3.9	4.3	4.7	5.2	5.6	5.9	6.5

③ Flights of civil ACFT over the central part of the city below (1200) are PROHIBITED.

CHANGE: New chart