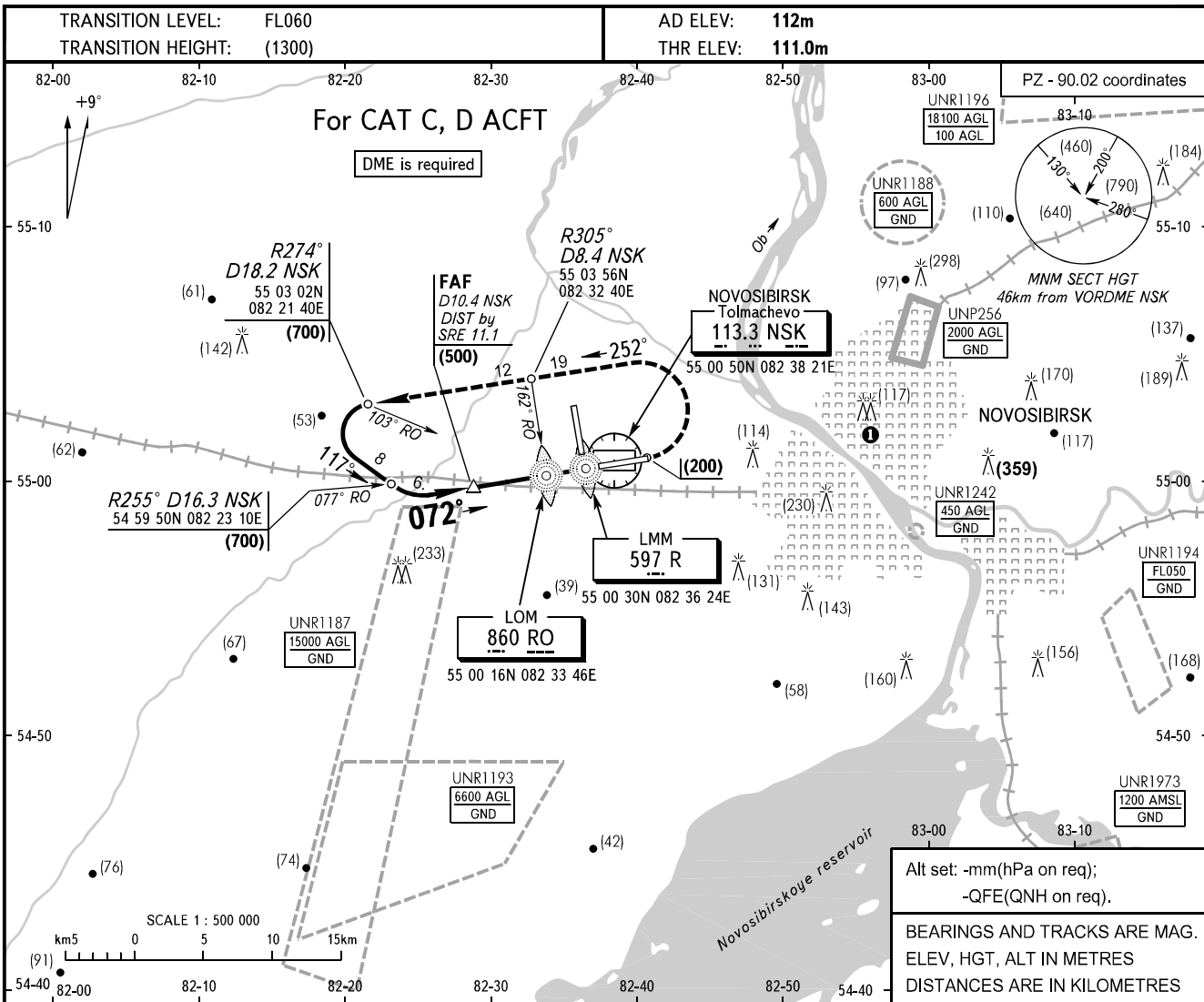


**INSTRUMENT  
APPROACH  
CHART - ICAO**

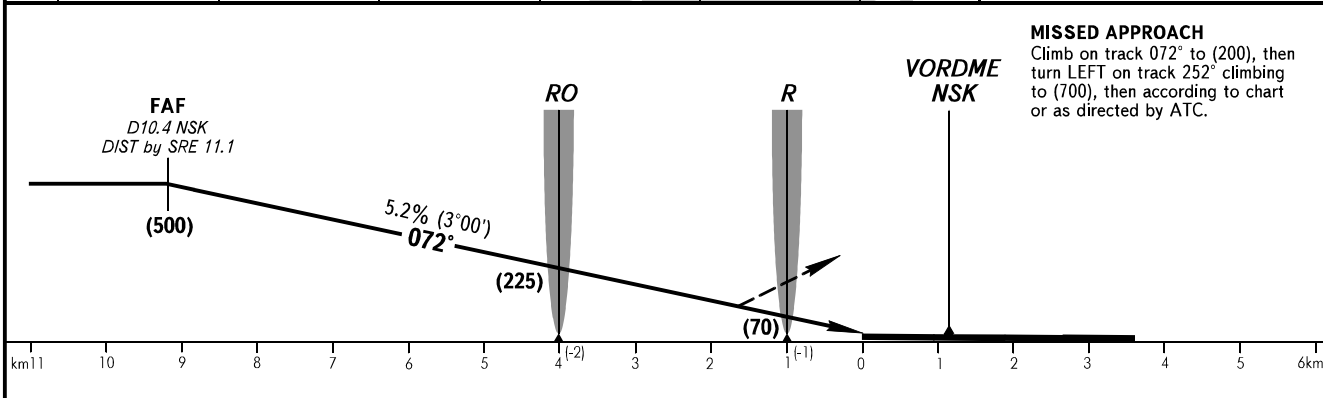
**NOVOSIBIRSK, RUSSIA  
TOLMACHEVO  
2 NDB RWY 07**

RADAR	122.000
TOWER	118.500



Alt set: -mm(hPa on req);  
-QFE(QNH on req).

BEARINGS AND TRACKS ARE MAG.  
ELEV, HGT, ALT IN METRES  
DISTANCES ARE IN KILOMETRES



OCA(H)		A	B	C	D								
Straight-in Approach	With FAF			215(104)	215(104)								
	WO FAF			338(227)	338(227)								
<p>① Flights of civil ACFT over the central part of the city below (1200) are PROHIBITED.</p>													
GROUND SPEED		km/h	150	180	210	240	270	300	330	360	390	420	450
RATE OF DESCENT		m/s	2.1	2.6	3.0	3.4	3.9	4.3	4.7	5.2	5.6	5.9	6.5