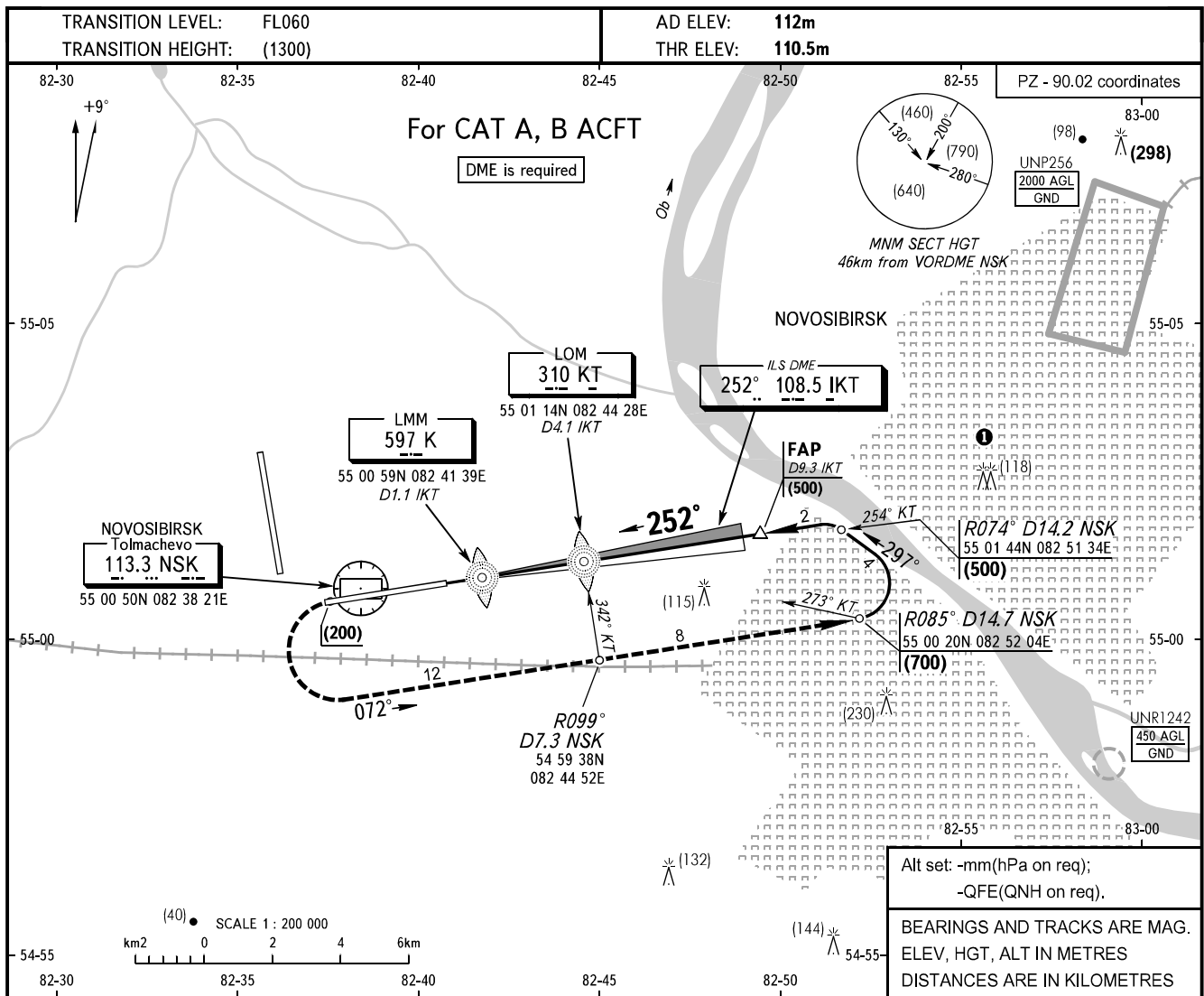


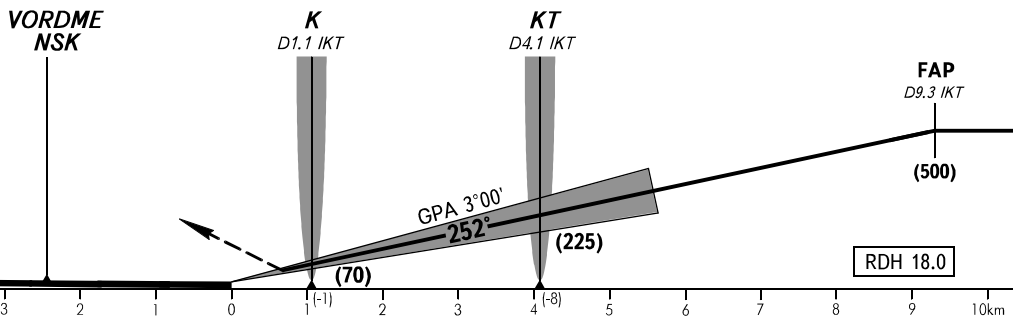
**INSTRUMENT
APPROACH
CHART - ICAO**

RADAR	122.000
TOWER	118.500

**NOVOSIBIRSK, RUSSIA
TOLMACHEVO
ILS RWY 25 CAT I**



MISSED APPROACH
Climb on track 252° to (200),
then turn LEFT on track 072°
climbing to (700), then according
to chart.



OCA(H)		A	B	C	D								
Straight-in Approach	CAT I	154(43)	157(46)										
GROUND SPEED		km/h	150	180	210	240	270	300	330	360	390	420	450
RATE OF DESCENT		m/sec	2.1	2.6	3.0	3.4	3.8	4.3	4.7	5.1	5.5	6.0	6.4

Flights of civil ACFT over the central part of the city below (1200) are PROHIBITED.