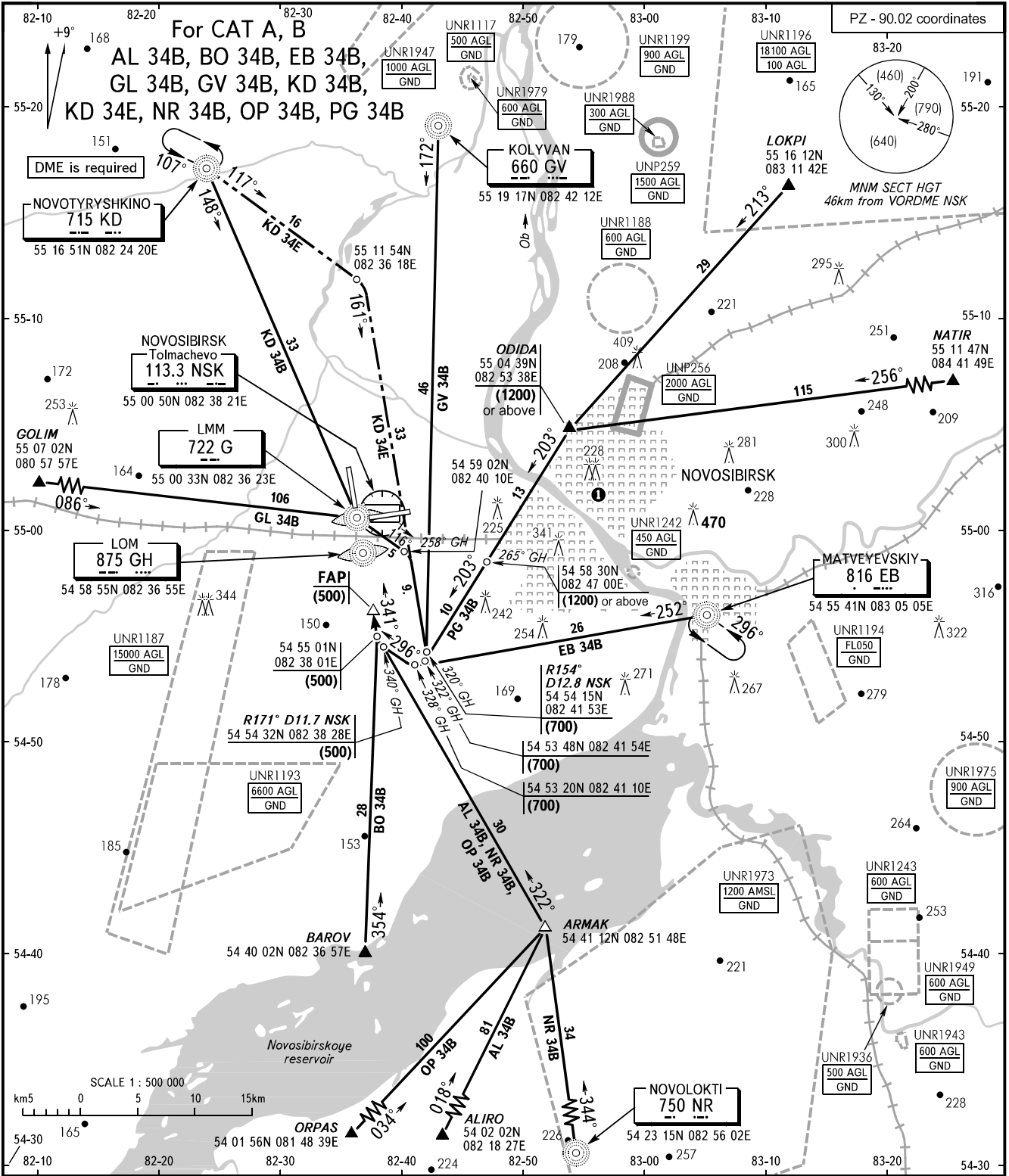


STANDARD ARRIVAL CHART
INSTRUMENT (STAR) - ICAO

TRANSITION
LEVEL : **FL060**

NOVOSIBIRSK, RUSSIA
TOLMACHEVO
RWY 34



TOWER	126.700
RADAR	122.000
APPROACH	FL060-FL190 127.500
	FL060-FL070 (by ATC) 127.100

Flights of civil ACFT over the central part of the city below (1200) are PROHIBITED.

BEARINGS AND TRACKS ARE MAGNETIC
ALTITUDES, HEIGHTS AND ELEVATIONS ARE IN METRES
DISTANCES ARE IN KILOMETRES