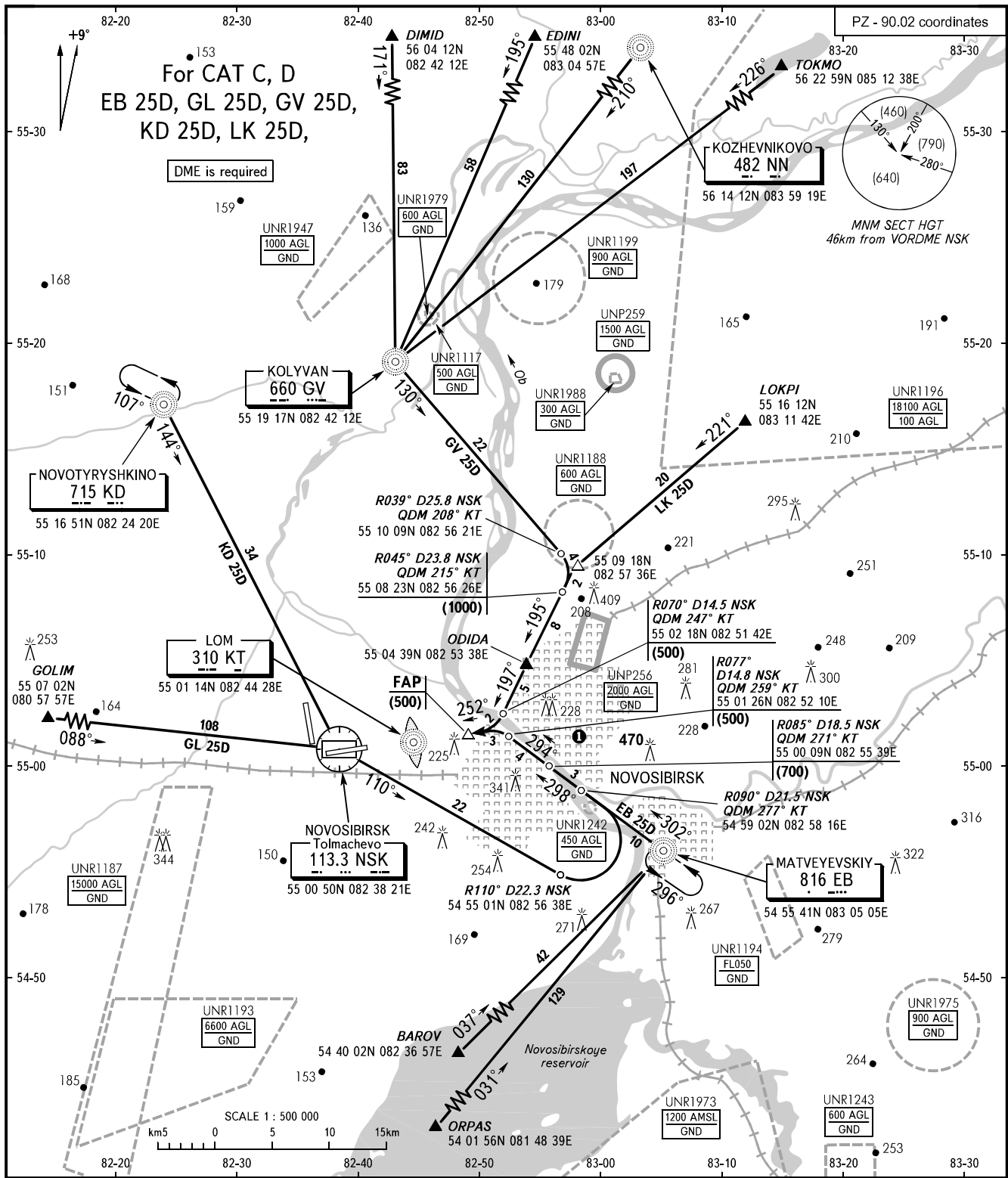


STANDARD ARRIVAL CHART
INSTRUMENT (STAR) - ICAO

NOVOSIBIRSK, RUSSIA
TOLMACHEVO
RWY 25

TRANSITION
LEVEL : FL060



APPROACH	FL060-190	127.500
	FL060-070 (by ATC)	127.100
RADAR		122.000
TOWER		118.500

BEARINGS AND TRACKS ARE MAGNETIC
ALTITUDES, HEIGHTS AND ELEVATIONS ARE IN METRES
DISTANCES ARE IN KILOMETRES

AIRAC AMDT 11/17

Federal Air Transport Agency