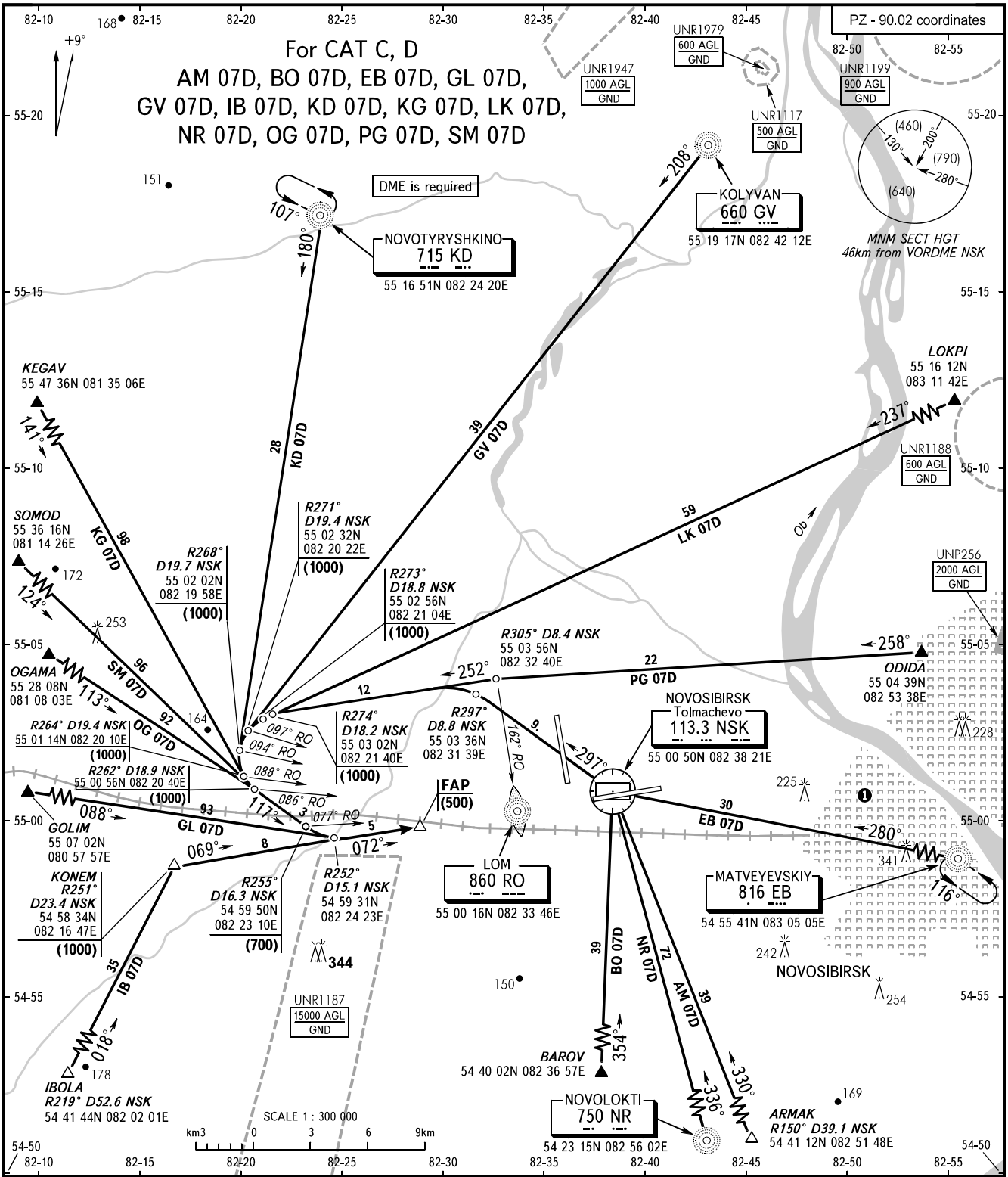


STANDARD ARRIVAL CHART
INSTRUMENT (STAR) - ICAO

TRANSITION
LEVEL: **FL060**

NOVOSIBIRSK, RUSSIA
TOLMACHEVO
RWY 07



APPROACH	FL060-190	127.500
	FL060-070 (by ATC)	127.100
RADAR		122.000
TOWER		118.500

① Flights of civil ACFT over the central part of the city below (1200) are PROHIBITED.

BEARINGS AND TRACKS ARE MAGNETIC
ALTITUDES, HEIGHTS AND ELEVATIONS ARE IN METRES
DISTANCES ARE IN KILOMETRES