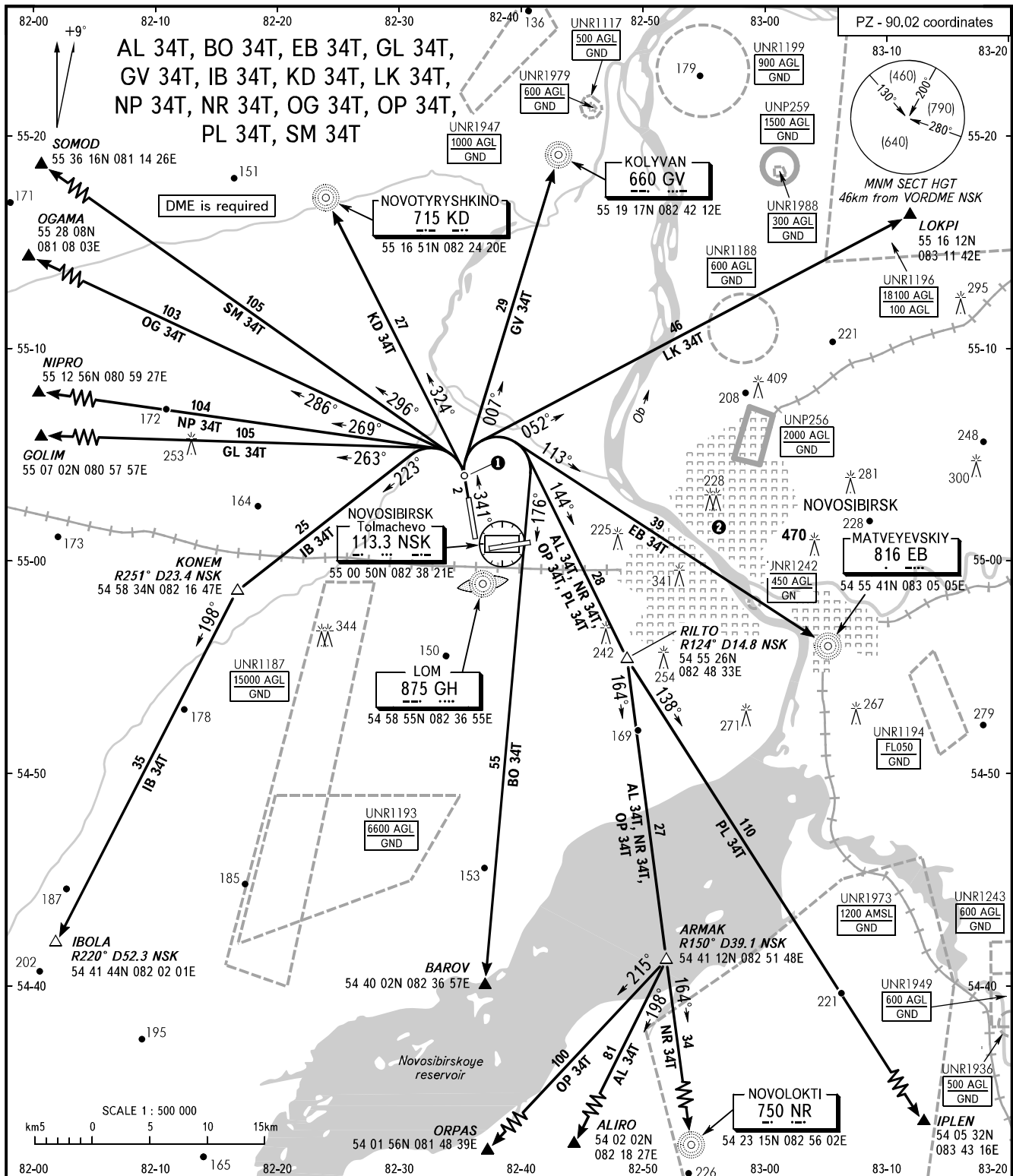


STANDARD DEPARTURE CHART
INSTRUMENT (SID) - ICAO

TRANSITION
HEIGHT : (1300)

NOVOSIBIRSK, RUSSIA
TOLMACHEVO
RWY 34



TOWER	126.700
RADAR	122.000
APPROACH	FL060-FL190
	FL060-FL070 (by ATC)
	127.500
	127.100

- 1 Initial turn shall be executed at D6.8 NSK. When necessary, flaps and gear retraction shall be made after or in the process of turn.
- 2 Flights of civil ACFT over the central part of the city below (1200) are PROHIBITED.

BEARINGS AND TRACKS ARE MAGNETIC
ALTITUDES, HEIGHTS AND ELEVATIONS ARE IN METRES
DISTANCES ARE IN KILOMETRES